



# สต็อกทุนของประเทศไทย

ฉบับ พ.ศ. 2555

## CAPITAL STOCK OF THAILAND

2012 EDITION



สำนักงานคณะกรรมการพัฒนาการเศรษฐกิจและสังคมแห่งชาติ  
Office of the National Economic and Social Development Board

[www.nesdb.go.th](http://www.nesdb.go.th)

## EXECUTIVE SUMMARY

---

# *Executive Summary*

## *Capital Stock of Thailand in 2012*

---

### **1. Overview**

Gross capital stock at replacement cost in 2012 was valued at Baht 50,074.6 billion, increasing of Baht 3,168.3 billion from 2011. Such an increase was seen from higher replacement investment of manufacturing sector in Central Industrial Estate, particularly on machineries, equipment and factories which were damaged by the flood during the end of 2011, together with a rise in the investment of infrastructure—namely roads, check dams, and dams. Consequently, this posted a real-term expansion of 3.6%, increasing from a rise of 2.4% in 2011.

### **2. Net Capital Stock**

Net capital stock at replacement cost in 2012 was valued at Baht 35,559.3 billion. After deducting depreciation, the value of net capital stock increased of Baht 2,217.2 billion from 2011. Compared to the value of net capital stock and GDP, the value of net capital stock in nominal terms was 3.13 times higher the GDP value.

**2.1 Net capital stock classified by institutions** showed that private sector held 70% of total capital stock meanwhile public sector occupied 30%.

#### **2.2 Net capital stock classified by activities**

**1) Agricultural sector:** net capital stock at replacement cost valued at Baht 2,537.5 billion or 4.4% growth in real terms, increasing from a rise of 2.4% in 2011. Such an expansion caused from higher investment in agricultural buildings, livestock farms and animal breeders for replacing the loss and the death of them during severe flood by the end of 2011.

**2) Non-agricultural sector:** net capital stock at replacement cost valued at Baht 33,021.7 billion, or 3.5% growth in real terms, compared with 2.2% in 2011. Such an increase resulted from

- **Manufacturing:** net capital stock at constant prices increased by 5.2%, compared to a rise of 2.3% in 2011, due mainly to both the new investment and the investment in machineries and equipment replacement which were damaged during the flood.

- **Services and other sectors:** net capital stock at constant prices increased by 3.1%, compared to 2.1% in 2011. Such an expansion was seen in almost all sectors except electricity, gas and water supply; health service and other service sector which showed slower pace of growth.

Table 1 Value, Structure and Growth Rate of Gross Capital Stock and Net Capital Stock

Unit – Billion Baht

	2007	2008	2009	2010	2011r	2012p
Value of Gross Capital Stock at Replacement Cost	35,873.2	39,718.7	39,734.5	43,119.2	46,906.3	50,074.6
Growth Rate of Gross Capital Stock at 1988 Prices (%)	3.2	3.3	2.6	3.8	2.4	3.6
- Public	4.4	4.1	3.9	2.8	3.9	3.3
- Private	2.7	2.9	2.0	4.2	1.7	3.7
Value of Net Capital Stock at Replacement Cost	25,769.6	28,567.3	28,397.8	30,756.2	33,342.2	35,559.3
- Public	8,105.7	9,244.8	9,099.2	9,875.9	10,776.6	11,423.2
- Private	17,663.9	19,322.5	19,298.7	20,880.3	22,565.6	24,136.1
Growth Rate of Net Capital Stock at 1988 Prices (%)	3.4	3.0	2.1	3.5	2.2	3.6
- Public	3.8	3.2	2.9	1.5	3.1	2.5
- Private	3.3	2.9	1.7	4.3	1.8	4.0

### 3. Capital factor analysis and sources of economic growth in 2012

#### 3.1 Incremental Capital Output Ratio: ICOR

##### Overview

ICOR in 2012 stood at 1.44, decreasing from 72.90 in 2011. It showed the recovery after the severe flood by the end of 2011. ICOR means an increase of GDP by 1 unit came from 1.44 unit rise in capital. Considering ICOR by sectors, it exhibited as follows:

- **Agriculture:** ICOR in agriculture was at 2.81 compared to 1.50 in 2011. It meant that an increase of GDP by 1 unit came from 2.81 unit rise in capital. This exhibited that agriculture sector was no capital-productive.

- **Manufacturing:** ICOR in 2012 was at 0.91 compared to a fall of 0.61 in 2011. It showed that an increase of GDP by 1 unit came from 0.91 unit rise in capital, thus manufacturing was more capital-productive.
- **Services and others sectors:** ICOR equaled to a rise of 1.72 compared to a rise of 2.74 in 2011. This illustrated the upward trend of more efficient capital employment in the sectors.

### 3.2 Capital Productivity: CP

#### Overview

In 2012, CP was equal to 0.39, compared with 0.38 in 2011. This meant that rising in 1 unit of capital resulted in rising of 0.39 unit of GDP. Considering CP by sectors, it showed as follows:

- **Agriculture:** CP of agriculture in 2012 stood at 0.39, compared to 0.40 in previous year. It meant that rising in 1 unit of capital resulted in rising of 0.39 unit of GDP.
- **Manufacturing:** CP of manufacturing was 0.84, compared to 0.83 in previous year. After adjusted with capacity utilization of manufacturing, CP of manufacturing stood at 1.28, compared with 0.84 which was not adjusted with capacity utilization. It showed that the manufacturing still was the efficient capital-productive.
- **Services and other sectors:** CP of services and other sectors posted at 0.28, compared to 0.27 in previous year.

### 3.3 Total Factor Productivity: TFP

#### Overview

Overall GDP increased by 6.5% in 2012, compared to a rise of 0.1% in 2011. Consider sources of economic growth regarding factors of production, it was contributed by 2.44% of capital, 0.36% of labor, while TFP with a rise of 3.69%, respectively. Considering TFP by sectors, it exhibited as follows:

- **Agriculture:** GDP of agriculture sector increased by 3.8% in 2012, compared to a rise of 4.1% in 2011. Considering sources of economic expansion, this was due to the rise of 3.93% of capital,

3.93% of labor, 0.02% of land, meanwhile TFP decreased by 0.39% of TFP. This exhibited that the expansion of agriculture sector cause mainly from the increase in main input factor.

- **Manufacturing:** In 2012, GDP of manufacturing sector increased by 6.9%, compared to a fall of 4.3% in 2011. Consider sources of economic expansion, this was contributed from a rise of 3.31% in capital, 0.64% in labor, and 2.95% in TFP as a consequence of the increase in the new investment and replacement investment in machineries and equipment as a result of the damage during the flood by the end of 2011 together with efficient production management to respond to both domestic and external demand.
- **Services and other sectors:** In 2012, GDP of services and other sectors increased by 6.62%, accelerating from 2.90% in 2011 owing to the acceleration in production to compensate the suspended economy by the end of 2011. Consider sources of economic expansion, this was contributed from a rise of 4.84% in TFP, 2.06% in capital, meanwhile labor dropped by 0.28%.

Table 2 Capital factor analysis and sources of economic growth in 2012

	ICOR	CP	GDP growth	Labor	Land	Capital	TFP
Overall	1.44	0.39	6.50	0.36	0.00	2.44	3.69
● Agriculture	2.81	0.40	3.80	0.23	0.02	3.93	-0.39
● Manufacturing	0.91	0.84	6.90	0.64	-	3.31	2.95
● Service & others	1.72	0.28	6.62	-0.28	-	2.06	4.84

## Indicator of Capital

	2007	2008	2009	2010	2011r	2012p
1. GDP at Current Price (Billion Baht)	8,525.2	9,080.5	9,041.6	10,104.8	10,540.1	11,375.3
2. GDP at Constant 1988 Price (Billion Baht)	4,259.0	4,364.8	4,263.1	4,596.1	4,599.7	4,898.2
• Growth Rate (%)	5.0	2.5	-2.3	7.8	0.1	6.5
3. Investment Value at Current Price (Billion Price)	2,249.7	2,492.3	2,181.8	2,499.3	2,769.0	3,245.9
4. Growth Rate of Investment at Constant 1988 Price (%)	1.5	1.2	-9.2	9.4	3.3	13.2
Public	4.9	-4.7	2.7	-2.2	-8.7	8.9
• Construction	7.0	-9.0	5.9	3.2	-15.2	9.5
• Equipment	0.6	4.8	-3.4	-13.4	7.4	7.7
Private	0.4	3.2	-13.1	13.8	7.2	14.4
• Construction	-2.6	0.1	-5.1	10.6	5.0	8.3
• Equipment	1.3	4.1	-15.3	14.7	7.8	16.2
5. Net Capital Stock at Replacement Cost (Billion Baht)	25,769.6	28,567.3	28,397.9	30,756.2	33,342.1	35,559.3
• Public	8,105.7	9,244.8	9,099.2	9,875.9	10,776.5	11,423.2
• Private	17,663.9	19,322.5	19,298.7	20,880.3	22,565.6	24,136.1
6. Growth Rate of Net Capital Stock at Constant 1988 Price (%)	3.4	3.0	2.1	3.5	2.2	3.6
• Public	3.8	3.2	2.9	1.5	3.1	2.5
• Private	3.3	2.9	1.7	4.3	1.8	4.0
7. Structure of Net Capital Stock (%)						
• Public	30.3	30.4	30.6	30.0	30.3	30.0
• Private	69.7	69.6	69.4	70.0	69.7	70.0
8. Net Capital Stock by Economic Activity at Replacement Cost (Billion Baht)						
• Agriculture	1,734.2	1,995.8	2,007.7	2,201.0	2,355.2	2,537.5
• Manufacturing	4,809.9	5,244.8	5,399.0	5,949.3	6,408.8	6,907.2
• Service & Others	19,225.5	21,326.7	20,991.2	22,605.9	24,578.1	26,114.6
9. Growth Rate of Net Capital Stock at Constant 1988 Price (%)						
• Agriculture	4.7	4.2	3.3	5.5	2.4	4.4
• Manufacturing	4.7	4.4	2.6	5.9	2.3	5.2
• Service & Others	3.0	2.5	1.9	2.7	2.1	3.1
10. Incremental Capital Output Ratio: ICOR	1.79	3.06	-2.30	1.19	72.90	1.44
11. Capital Productivity: CP	0.39	0.39	0.37	0.39	0.38	0.39
12. Total Factor Productivity: TFP						
• Agriculture	-3.53	-0.33	-1.12	-7.38	-1.46	3.69
• Manufacturing	2.70	2.60	-7.02	10.51	2.20	-0.39
• Service & Others	1.99	-1.03	-2.93	2.72	-5.40	2.95
• Overall	2.16	-0.27	-4.23	5.14	1.52	4.84

Source: National Accounts Office, The Office of National Economic and Social Development Board

CAPITAL STOCK OF THAILAND  
2012 EDITION

---

---

# CAPITAL STOCK OF THAILAND 2012

## 1. OVERVIEW

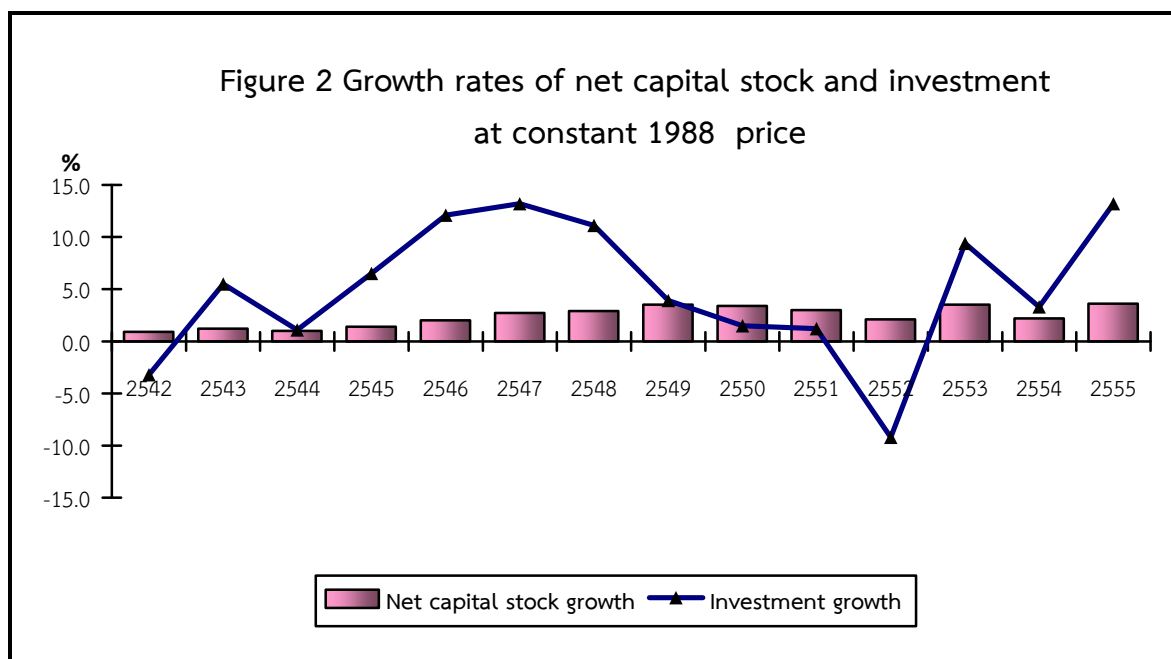
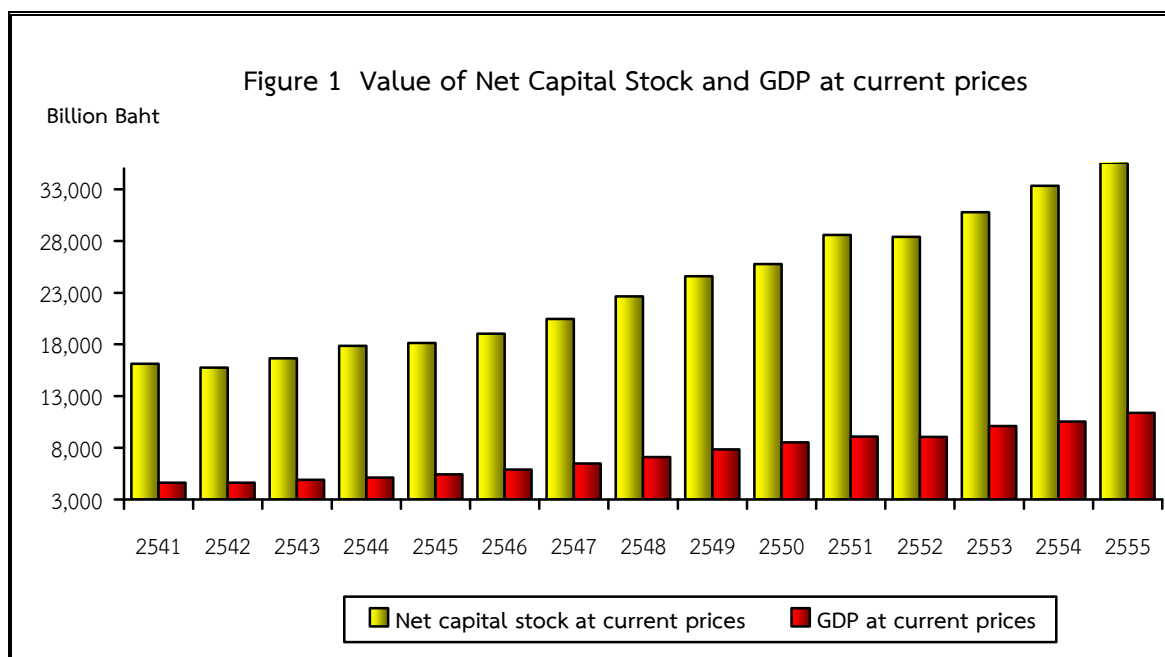
### 1.1 Gross Capital Stock

Gross capital stock at replacement cost in 2012 was valued at Baht 50,074.6 billion, increasing of Baht 3,168.3 billion from 2011. The expansion in value of gross capital stock resulted from both more new investment and replacement investment on machineries, equipment, and factory buildings of private sector in Central Industrial Estate and in linkage industries which had adversely been impacted by flood during the end of 2011. In addition, the new investment on infrastructure, namely roads, dams were included in this year. As a result, the investment in 2012 expanded by 13.2%, consisting of 14.4% of private investment and 8.9% of public investment. This posted a real-term expansion of 3.6%, accelerating from a rise of 2.4% in 2011.

### 1.2 Net Capital Stock

Net capital stock at replacement cost in 2012 was valued at Baht 35,559.3 billion. After deducting depreciation, the value of net capital stock increased of Baht 2,217.2 billion from 2011. Compared to the value of net capital stock and GDP, the value of net capital stock in nominal terms was 3.11 times higher than GDP value.

Consider the growth rate of net capital stock in real terms, it increased by 3.6%, compared to a rise of 2.2% in 2011, mainly contributed by the acceleration of agriculture and non-agriculture sectors, particularly from the 5.2% acceleration on manufacturing, compared to a rise of 2.3% in 2011.



## 2. CLASSIFICATION

Net capital stock of Thailand can be classified in 2 ways:

**2.1 Classified by institutions** consists of net capital stock of public sector and net capital stock of private sector as follows:

### 2.1.1 Public sector

#### Overview

The value of gross capital stock of public sector at replacement cost in 2012 was Baht 16,243.6 billion, increasing of Baht 1,049.9 billion from 2011. After deducting accumulated depreciation, net capital stock equaled to Baht 11,423.1 billion--a growth of 2.5%, slowing down from 3.1% in 2011. This mainly resulted from the deceleration in electricity, and water supply.

#### Structure of public sector net capital stock

Public sector held 30.0% of the total capital stock and increased by 2.5% in 2012. It can also be further classified according to types of assets as follows:

**1. Construction:** In 2012, public sector held 83.0% of its total capital stock as construction. Construction assets mostly consisted of roads, bridges, dams, check dams, airport, office buildings, and electricity power plant.

**2. Machineries and equipment:** Machineries and equipment accounted for 17.0% of total public sector capital stock in 2012. However, public sector's net capital stock showed upward trend from 16.3% and 16.4% in 2010 and 2011, respectively. This was partly a result of office machinery equipment, machinery and equipment investment, together with 7 aircrafts of Thai Airways International Plc. with the value of Baht 32,606 million in 2011 and 6 of them with the value of Baht 35,556 million.

Considering economic activity, it was found that most of net capital stock of public sector was seen in transports and communication with 27.6% share, followed by electricity and water supply; and agriculture with 23.1% and 14.9%, respectively.

### 2.1.2 Private sector

#### Overview

Value of gross capital stock of private sector at replacement cost in 2012 was Baht 33,831.0 billion, rising by Baht 2,118.4 billion from 2011. After

deducting accumulated depreciation, net capital stock valued Baht 24,136.1 billion—a 4.0% of growth, rising from 1.8% in 2011 as a consequence of the acceleration in machineries and equipment investment to replace flood-damaged ones by the end of 2011. Thus, private investment in 2012 accelerated by 14.4% compared to a rise of 7.2% in 2011.

### **Structure of private sector net capital stock**

Private sector occupied 70.0% of total capital stock in Thailand increased by 4.0% in 2012. It can also be classified by type of assets as follows:

1. **Construction:** In 2012, 46.8% of total private sector capital stock was construction. Construction assets were mostly residential building, commercial building, and factory construction.

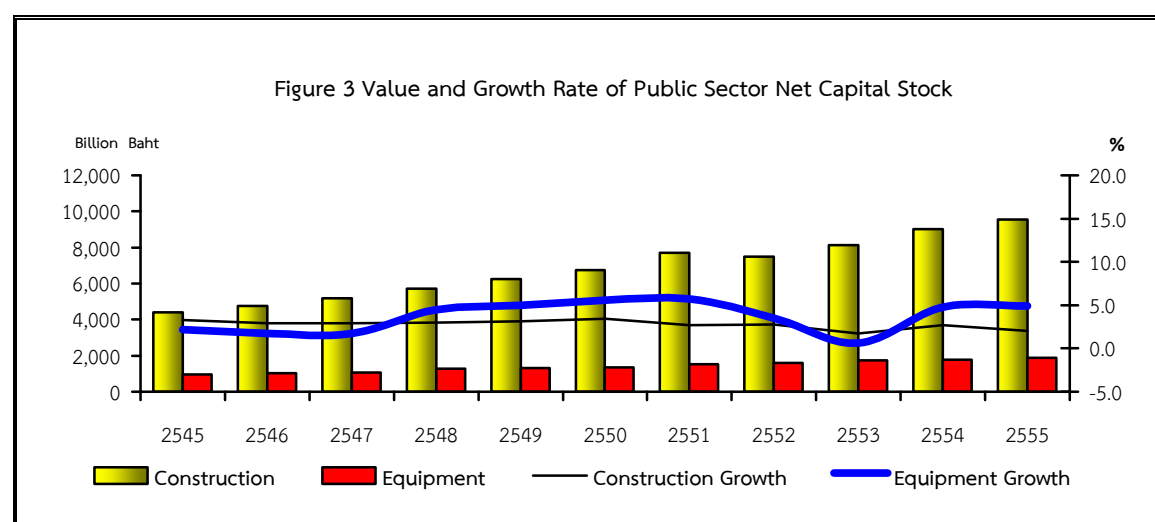
2. **Machineries and equipment:** Share of machineries and equipment in total private sector capital stock was 53.2% in 2012, continually increasing from a rise of 51.5% and 53.0% in 2010 and 2011 respectively. Investment was mostly made in manufacturing activities in response to higher domestic and external demand, including higher investment in motor vehicles such as trucks, and buses.

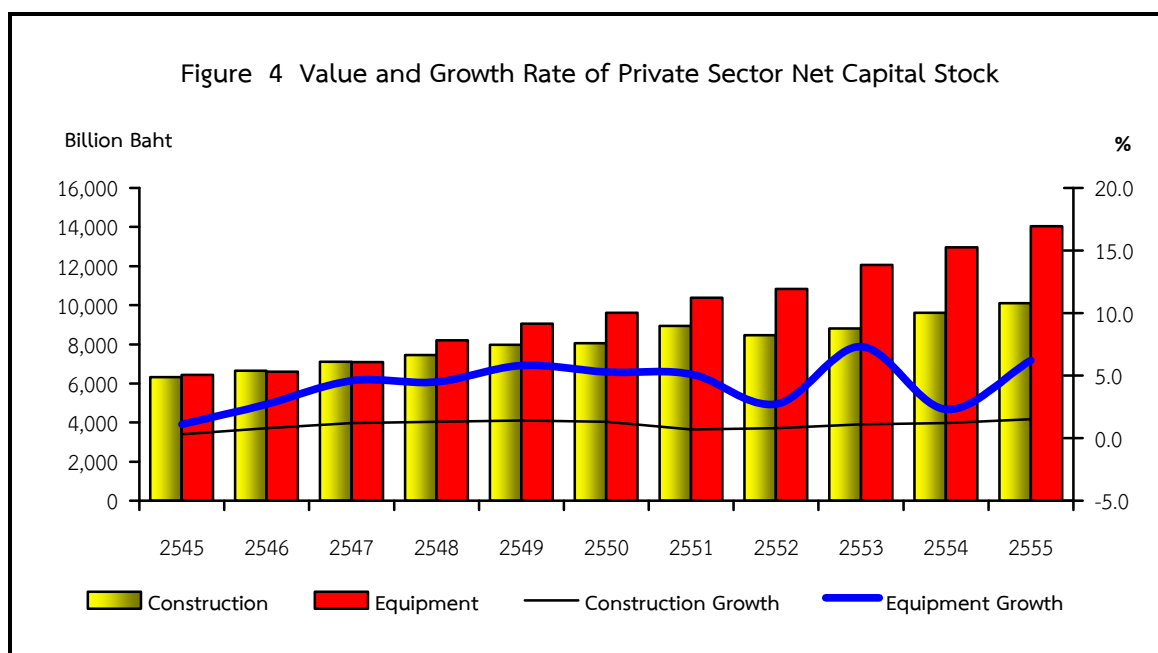
Considering economic activity, it was found that most of net capital stock of private sector was seen in real estate with 26.1%, followed by manufacturing, transports and communication, and wholesale and retail trade with 24.7%, 13.6%, and 10.5% share, respectively.

Table 1 Value, Structure and Growth Rate of Net Capital Stock at Replacement Cost

Unit – Billion Baht

	2007	2008	2009	2010	2011r	2012p
Value of Gross Capital Stock at Replacement Cost	35,873.2	39,718.7	39,734.6	43,119.2	46,906.3	50,074.6
Growth Rate of Gross Capital Stock at 1988 Prices (%)	3.2	3.3	2.6	3.8	2.4	3.6
Public	4.4	4.1	3.9	2.8	3.9	3.3
Private	2.7	2.9	2.0	4.2	1.7	3.7
Value of Net Capital Stock at Replacement Cost	25,769.6	28,567.3	28,397.9	30,756.2	33,342.2	35,559.3
Public	8,105.7	9,244.8	9,099.2	9,875.9	10,776.6	11,423.2
Private	17,663.9	19,322.5	19,298.7	20,880.3	22,565.6	24,136.1
Structure of Net Capital Stock at 1988 Prices (%)	100.0	100.0	100.00	100.0	100.0	100.0
Public	30.3	30.4	30.6	30.0	30.3	30.0
Private	69.7	69.6	69.4	70.0	69.7	70.0
Growth Rate of Net Capital Stock at 1988 Prices (%)	3.4	3.0	2.1	3.5	2.2	3.6
Public	3.8	3.2	2.9	1.5	3.1	2.5
Private	3.3	2.9	1.7	4.3	1.8	4.0





## 2.2 Classified by economic activity

### 2.2.1 Capital stock by economic activities

Capital stock can be classified into 15 economic activities, namely agriculture; fishing; mining and quarrying; manufacturing; electricity and water supply; construction; wholesale and retail trade; hotels and restaurants; transport and communications; financial intermediation; real estate and business activities; public administration; education; health and social works; and other community, social and personal services.

Capital stock at replacement cost in 2012 was Baht 50,074.6 billion. By considering the structure of distribution of capital stock among economic activities, real estate and business activities came up with the highest value of Baht 10,330.9 billion—mainly contributed by residential and official building construction, followed by transport and communications with the value of Baht 9,481.9 billion—covering public construction such as roads, railway, airport, as well as aircrafts; manufacturing with the value of Baht 8,670.9 billion, electricity and water supply with the value of Baht 4,326.4 billion, wholesale and retail trade with the value of Baht 3,634.1 billion, agriculture with the value of Baht 3,900.8 billion, health and social works with the value of Baht 2,086.8 billion, hotels and restaurants with the value of Baht 1,850.0 billion, construction with the value of Baht 1,496.8 billion,

other community, social and personal services with the value of Baht 1,177.5 billion, education with the value of Baht 1,017.7 billion, public administration with the value of Baht 774.6 billion, fishing with the value of Baht 778.9 billion, mining and quarrying with the value of Baht 690.7 billion, and financial intermediation with the value of Baht 634.9 billion.

Likewise, gross capital stock in real terms increased by 3.6%, rising from 2.4% in 2011. By considering each economic activity, education increased at the highest rate of 4.7%, followed by mining and quarrying (4.6%); manufacturing (4.4%); agriculture (4.3%); health and social works (4.0%); construction (3.7%); financial intermediation (3.7%); hotels and restaurants (3.6%); transport and communications (3.6%); and other community, social and personal services (2.0%).

### **2.2.2 Net Capital stock by economic activities**

In 2012, the value of net capital stock at replacement cost was Baht 35,559.3 billion. By considering each economic activities, transport and communications appeared to be the sector with the highest value at Baht 7,259.5 billion, followed orderly by manufacturing with Baht 6,907.2 billion, real estate and business activities with Baht 6,604.6 billion, electricity and water supply with Baht 3,030.0 billion, wholesale and retail trade with Baht 2,476.8 billion, agriculture with Baht 2,034.1 billion, construction with Baht 1,360.1 billion, hotels and restaurants with Baht 1,277.6 billion, health and social works with Baht 1,063.7 billion, other community, social and personal services with Baht 777.9 billion, education with Baht 675.6 billion, public administration with Baht 585.8 billion, mining and quarrying with Baht 546.4 billion, fishing with Baht 503.4 billion, and financial intermediation with Baht 456.2 billion.

In real term, net capital stocks in 2012 expanded by 3.6% compared with 2.2% in 2011. Considering by economic activities, almost all sectors showed accelerating growth, particularly on manufacturing with higher machineries and equipment investment, including public construction to replace flood-damaged ones by the end of 2011 as well as agriculture with higher investment on farm buildings and animal breeders.

However, sectors with slowdown growth were electricity and water supply with the growth rate of 2.5% slowing down from 5.0% in 2011; followed by hotels and restaurants, health and social works, and other community,

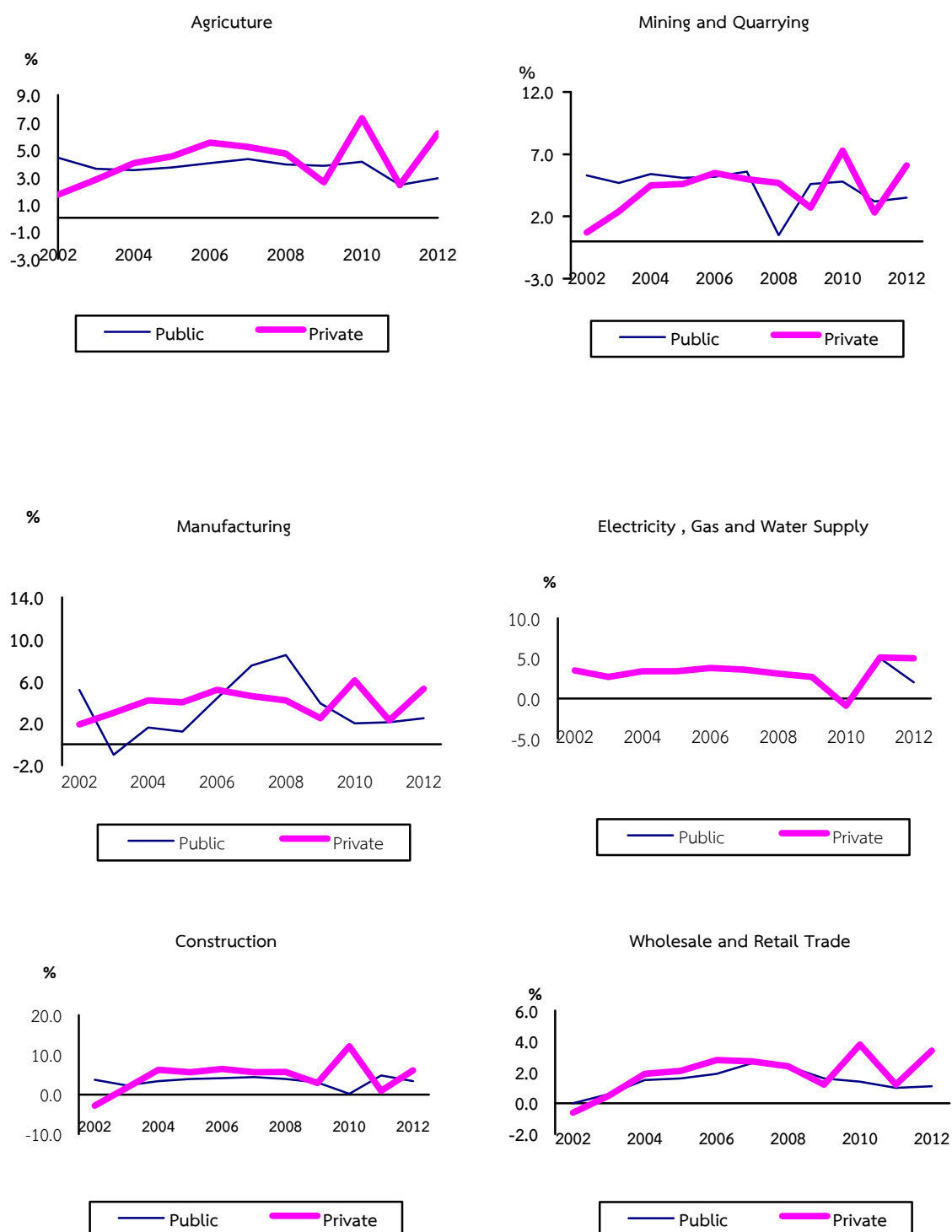
social and personal services with the growth rate of 3.4%, 2.8% and 1.6% compared to 4.4%, 3.7%, and 2.2% in 2011.

**Table 2 Value of Net Capital Stock at Replacement Cost by economic activities**

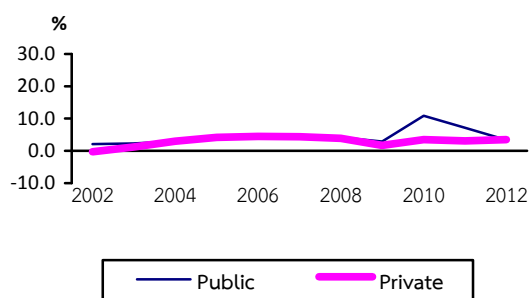
Unit: Billion Baht

	2007	2008	2009	2010	2011r	2012p
Agriculture, Hunting and Forestry	1,387.4	1,596.6	1,606.2	1,760.9	1,884.2	2,034.1
Fishing	346.8	399.2	401.5	440.2	471.0	503.4
Mining and Quarrying	372.8	408.5	423.0	469.7	505.0	546.4
Manufacturing	4,809.9	5,244.8	5,399.0	5,949.3	6,408.8	6,907.2
Electricity, Gas and Water Supply	2,220.4	2,513.7	2,388.0	2,669.3	2,826.0	3,030.0
Construction	946.3	1,021.8	1,066.5	1,186.7	1,275.2	1,360.2
Wholesale and Retail Trade; Repair of Motor Vehicles, Motorcycles	1,836.1	2,007.4	1,981.0	2,142.8	2,299.0	2,476.8
Hotels and Restaurants	942.8	1,031.2	1,025.6	1,110.2	1,203.6	1,277.6
Transport, Storage and Communications	5,155.8	5,771.4	5,790.3	6,210.2	6,831.4	7,259.5
Financial Intermediation	329.5	360.6	363.6	398.2	425.9	456.2
Real Estate, Renting and Business Activities	5,151.6	5,696.4	5,452.4	5,718.6	6,274.2	6,604.6
Public Administration and Defense; Compulsory Social Security	427.1	487.3	484.8	517.7	555.4	585.8
Education	477.6	530.8	528.7	572.9	625.6	675.6
Health and Social Work	781.0	846.2	840.1	908.9	997.3	1,063.8
Other Community, Social and Personal Service Activities	584.6	651.4	647.1	700.5	759.5	777.9
<b>Total</b>	<b>25,769.6</b>	<b>28,567.3</b>	<b>28,397.9</b>	<b>30,756.2</b>	<b>33,342.2</b>	<b>35,559.3</b>

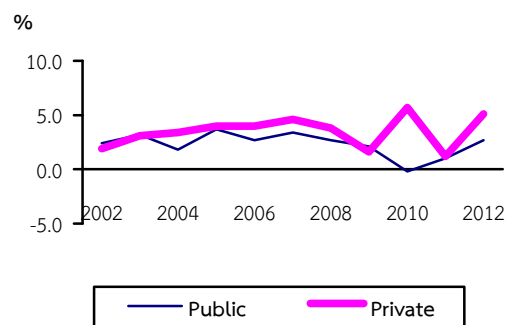
Figure 5 Growth Rate of Net Capital Stock by Economic Activities and Institutions



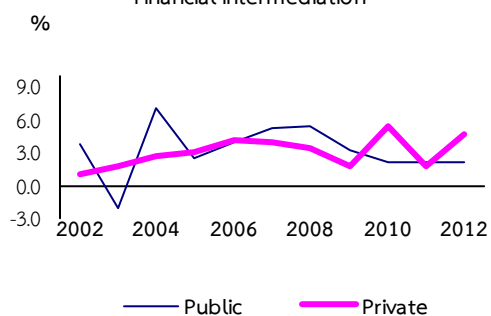
Hotels and Restaurants



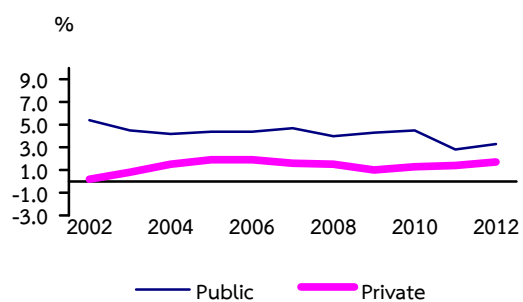
Transport, Storage and Communications



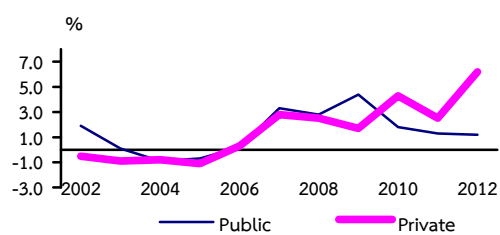
Financial Intermediation



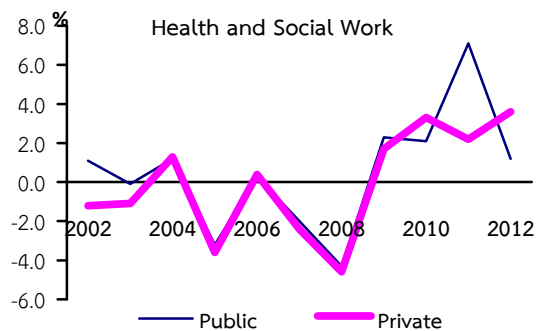
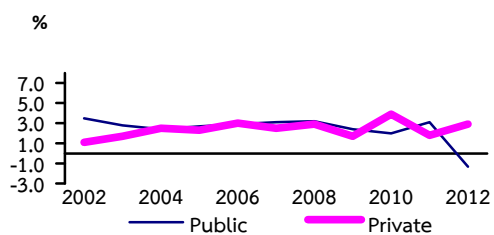
RealEstate, Renting and Business Activities



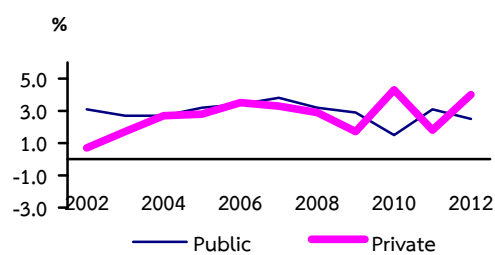
Education



Health and Social Work

Other Community, Social and Personal  
Service Activities

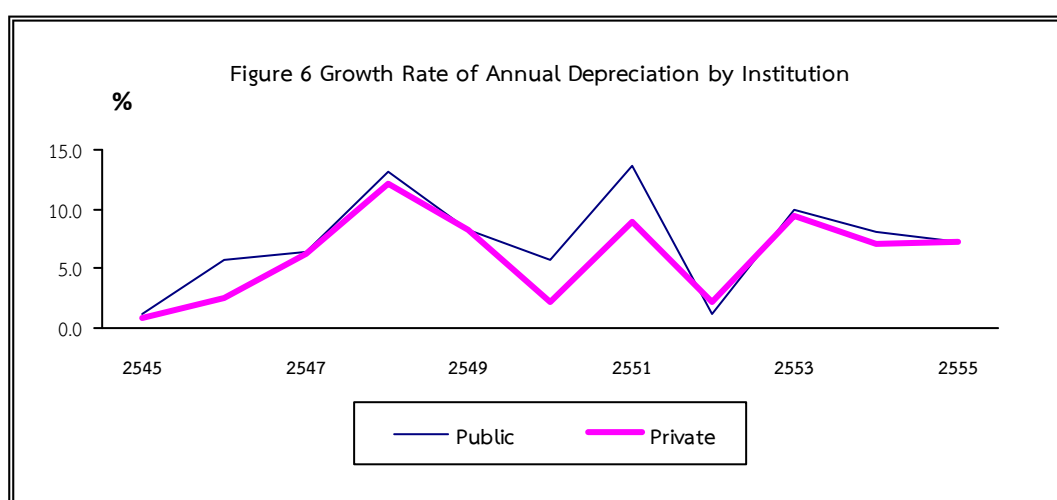
Net Capital Stock



### 3. Depreciation

#### Overview

For annual depreciation in 2012, annual depreciation at replacement cost was Baht 1,976.4 billion. The sectors with the highest share of total depreciation were transport and communication sector with the value of Baht 442.8 billion-a 22.4% share of total depreciation. This was due to the fact had a substantial part of investment in the sector went to vehicles as well as telecommunication equipment, all of which have shorter lives relative to assets such as construction, leading to a comparatively higher depreciation each year. Manufacturing sector, then, ranked second with the value of Baht 411.0 billion, followed by real estate and business activities with the value of Baht 194.2 billion, wholesale and retail trade with the value of Baht 185.3 billion, and with the share of 20.8%, 10.5%, and 10.0%, respectively. The rest came up with the shares of less than 10.0% were, in order, health and social works, agriculture, electricity and water supply, hotels and restaurants, construction, financial intermediation, education, mining and quarrying, public administration, fishing, and other community, social and personal services.



## 4 CAPITAL FACTOR ANALYSIS

### 4.1 Incremental Capital Output Ratio: ICOR

#### Overview

ICOR in 2012 stood at 1.44. ICOR means an increase of GDP by 1 unit came from 1.44 unit rise in capital, lower than 72.90 in 2011. It showed that goods production and services resumed after continual investment in capital; however some of them partly had no capital-productive.

#### ICOR by economic activities

In 2012, ICOR in agriculture was a rise of 2.81, compared to 1.50 in 2011. It meant that an increase of GDP 2012 by 1 unit came from 2.81 unit rise in capital, compared to a rise of 1.50 in 2011. This exhibited that agriculture sector was higher capital-productive when compared to 2011. Considering ICOR in agriculture averaging from the Seventh Plan to the first year of the Eleventh Plan, ICOR of the Eighth Plan stood at a fall of 5.4, more capital-productive.

In manufacturing, ICOR in 2012 was a rise of 0.91, in contrast to a fall of 0.61 in previous year. It exhibited that an increase of GDP 2012 by 1 unit came from 0.91 unit rise in capital. Nevertheless, averaging from the years of the Seventh Plan to the first year of the Eleventh Plan, ICOR in the Tenth Plan was 0.3, the most capital-productive.

For services and other sectors, ICOR equaled to a rise of 1.72, compared to a rise of 2.74 in 2011. This illustrated an increasing trend of efficient capital employment. Consider ICOR averaging from the Seventh Plan to the first year of the Eleventh Plan, ICOR stood at a fall of 68.5 in the Tenth Plan, the most capital-productive.

Table 3 Incremental Capital Output Ratio (ICOR)

	2007	2008	2009	2010p	2011	2012
Agriculture	8.73	2.33	5.61	-5.57	1.50	2.81
Non-Agriculture	1.60	3.19	-1.92	1.01	-19.57	1.37
• Manufacturing	0.85	1.26	-0.47	0.52	-0.61	0.91
• Service and Others	2.32	8.15	-357.66	2.01	2.74	1.72
<b>Total</b>	<b>1.75</b>	<b>3.06</b>	<b>-2.30</b>	<b>1.19</b>	<b>72.90</b>	<b>1.44</b>

Table 4 ICOR by National Economic and Social Plan

	7 <sup>th</sup> Plan	8 <sup>th</sup> Plan	9 <sup>th</sup> Plan	10 <sup>th</sup> Plan	11 <sup>th</sup> Plan*
Agriculture	1.5	-5.4	1.0	2.5	2.81
Non-Agriculture	3.5	-1.9	1.2	-3.1	1.37
• Manufacturing	1.7	1.7	0.6	0.3	0.91
• Service and Others	4.8	1.5	1.7	-68.5	1.72
<b>Total</b>	<b>3.6</b>	<b>-2.0</b>	<b>1.3</b>	<b>15.3</b>	<b>1.44</b>

\*First Years of the 11<sup>th</sup> Plan

## 4.2 Capital Productivity: CP

### Overview

In 2012, CP was equal to 0.39, compared to 0.38 in 2011. This meant that rising in 1 unit of capital resulted in rising of 0.39 unit of GDP. This exhibited more efficient capital-productive. Consider CP averaging from the years from the Seventh Plan to the first year of the Eleventh Plan, averaged CP was 0.37. Averaged CP of the Eighth Plan was 0.32, the lowest, due to Thailand economic crisis, thus it was no capital –productive.

### CP by economic activities

CP of agriculture in 2012 stood at 0.40, same level of previous year. Consider averaged CP of the Seventh Plan to the first year of the Eleventh Plan, averaged CP showed downward trend. Averaged CP of the Seventh Plan posted at

0.65 and continued to decrease to 0.53, 0.52, 0.42, and 0.40 in the Eighth Plan, the Ninth Plan, the Tenth Plan, and the first year of the Eleventh Plan, respectively.

CP of manufacturing, on the other hand, was 0.84, rising from 0.83 in previous year. This illustrated that capital productivity in manufacturing has moved forward. Consider the averaged value of the Seventh Plan to the first year of the Eleventh Plan, averaged CP of the Tenth Plan was 0.87, slightly rising from 0.83 in the Ninth Plan. After adjusted with capacity utilization of manufacturing, CP of manufacturing stood at 1.28, compared with 0.84 which was not adjusted with capacity utilization. This exhibited the efficient capital-productive.

For services and others sectors, CP posted at 0.28, compared to 0.27 in 2011. Consider each Plan, this exhibited that averaged CP showed upward trend from 0.23 in the Eighth Plan to 0.25, 0.27, and 0.28 in the Ninth Plan, the Tenth Plan, and the first year of the Eleventh Plan.

**Table 5 Capital Productivity (CP)**

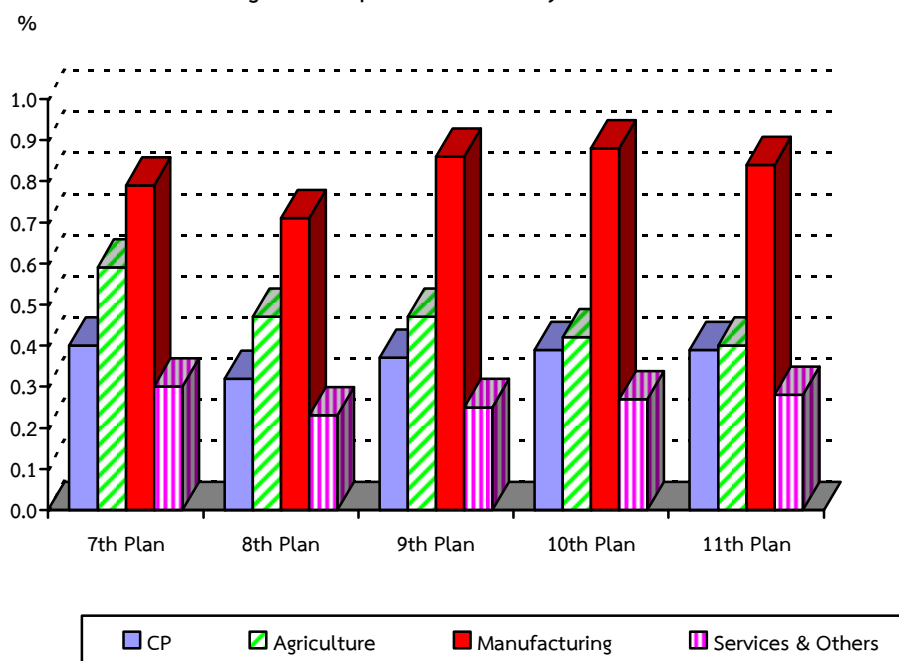
	2006	2007	2008	2009	2010r	2011r	2012p
Agriculture	0.45	0.44	0.44	0.43	0.40	0.40	0.40
Non-Agriculture	0.38	0.39	0.39	0.37	0.39	0.38	0.39
• Manufacturing	0.89	0.91	0.90	0.83	0.89	0.83	0.84
CAP U Adjusted*	1.21	1.35	1.40	1.41	1.36	1.36	1.28
• Service and Others	0.26	0.27	0.27	0.26	0.27	0.27	0.28
<b>Total</b>	0.39	0.39	0.39	0.37	0.39	0.38	0.39
<b>CAP U Adjusted*</b>	0.40	0.41	0.42	0.40	0.41	0.41	0.42

\*CAP U : Capital Utilizations

**Table 6 CP by National Economic and Social Plan**

	Agriculture	Manufacturing	Service & Others	Total
7 <sup>th</sup> Plan (1992 - 1996)	0.65	0.76	0.30	0.39
8 <sup>th</sup> Plan (1997 - 2001)	0.53	0.68	0.23	0.32
9 <sup>th</sup> Plan (2002 - 2006)	0.52	0.83	0.25	0.37
10 <sup>th</sup> Plan (2007 - 2011)	0.42	0.87	0.27	0.38
11 <sup>th</sup> Plan (2012)	0.40	0.84	0.28	0.39
<b>Average 1992 - 2012</b>	<b>0.50</b>	<b>0.80</b>	<b>0.27</b>	<b>0.37</b>

Figure 7 Capital Productivity (CP)



### 4.3 Total Factor Productivity: TFP

TFP determines the proportion of GDP growth that is not a result of an increase in factors of production (labor, capital, and land). This means TFP measures amount of GDP growth contributed by the residual or technical progress.

#### Overview

GDP of 2012 increased by 6.50% compared to a rise of 0.10% in 2011. Consider sources of economic growth regarding factors of production, it was contributed by 2.44% of capital, 0.36% of labor, and 3.69% of TFP. This exhibited that TFP was the important factor of economic growth, followed by capital and labor, respectively. TFP of 2012 showed upward trend in contrast to a fall of 1.46 in 2011 due to the economic recovery from the severe flood by the end of 2011 and the entrepreneurs managed their productions more effectively in respond to higher domestic and external demand in the second and third quarter in 2012.

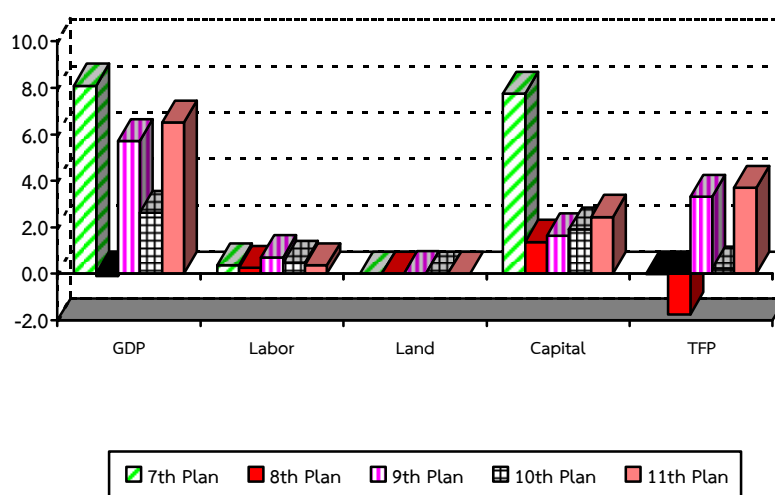
Considering averaged TFP from the Seventh Plan to the first year of the Eleventh Plan, TFP of the first of the Eleventh plan came up with the highest growth. The Ninth Plan ranked second with the growth of 3.32% per annum.

Table 7 Growth Rate of GDP and Sources of Growth

	7 <sup>th</sup> Plan	8 <sup>th</sup> Plan	9 <sup>th</sup> Plan	10 <sup>th</sup> Plan	10 <sup>th</sup> Plan					11 <sup>th</sup> Plan
					2007	2008	2009	2010	2011	2012
GDP Growth	8.09	-0.10	5.71	2.62	4.99	2.50	-2.30	7.80	0.10	6.50
Source of Growth										
Labor	0.37	0.26	0.71	0.48	0.51	0.69	0.60	0.28	0.34	0.36
Land	0.01	0.01	0.02	0.01	0.04	0.09	-0.07	0.04	-0.07	0.00
Capital	7.74	1.37	1.65	1.86	2.28	1.99	1.40	2.34	1.29	2.44
TFP	-0.03	-1.74	3.32	0.27	2.16	-0.27	-4.23	5.14	-1.46	3.69

%

Figure 8 Sources of GDP Growth



### TFP by economic activities

#### Agriculture sector

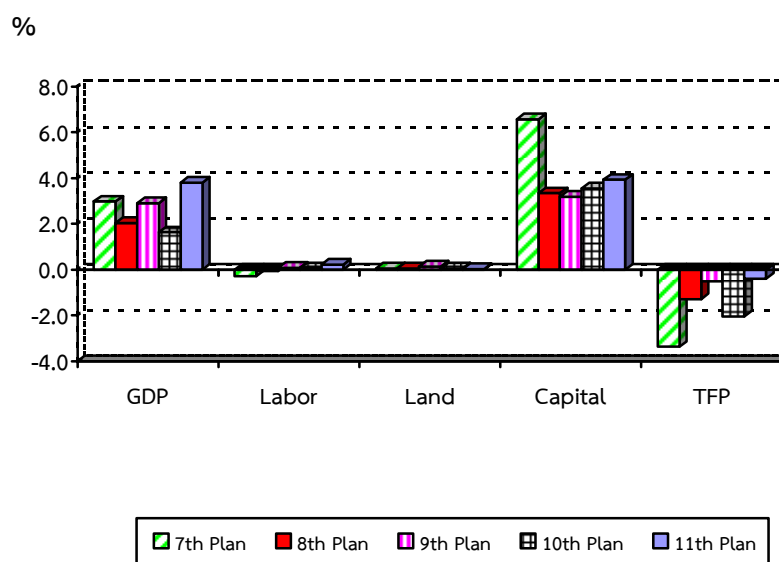
**Agriculture:** GDP of agriculture sector increased by 3.8% in 2012, compared to a rise of 4.1% in 2011. Considering sources of economic expansion, this was due to the rise of 3.93% of capital, 3.93% of labor, 0.02% of land, meanwhile TFP decreased by 0.39% of TFP. This exhibited that the expansion of agriculture sector cause mainly from the increase in main input factor.

Considering averaged TFP of agricultural sector from the Seventh Plan to the Tenth Plan, it exhibited that TFP of the Seventh Plan came up with the fall of 3.37%, while TFP of the Eighth Plan, the Ninth Plan, and the Tenth Plan with a fall of 1.29%, 0.51%, and 2.03% per annum, respectively.

Table 8 Growth Rate of GDP and Sources of Growth in Agriculture Sector

	7 <sup>th</sup> Plan	8 <sup>th</sup> Plan	9 <sup>th</sup> Plan	10 <sup>th</sup> Plan	10 <sup>th</sup> Plan					11 <sup>th</sup> Plan
					2007	2008	2009	2010	2011	2012
GDP Growth	2.98	2.04	2.90	1.64	0.90	4.20	1.30	-2.30	4.10	3.80
Source of Growth										
Labor	-0.27	-0.07	0.08	0.07	0.08	0.21	-0.00	-0.07	0.15	0.23
Land	0.05	0.06	0.14	0.05	0.26	0.60	-0.46	0.28	-0.44	0.02
Capital	6.57	3.34	3.19	3.55	4.09	3.72	2.88	4.87	2.19	3.93
TFP	-3.37	-1.29	-0.51	-2.03	-3.53	-1.03	-1.12	-7.38	2.20	-0.39

Figure 9 Sources of GDP Growth in Agriculture Sector



### Manufacturing sector

GDP of Manufacturing sector increased by 6.90% in 2012, in contrast to a fall of 4.30% in previous year. Such an increase was from the acceleration in production to offset the temporary shutdown by the end of 2011, together with the accelerated production of motor vehicles industry in respond to the government's First-Car Policy.

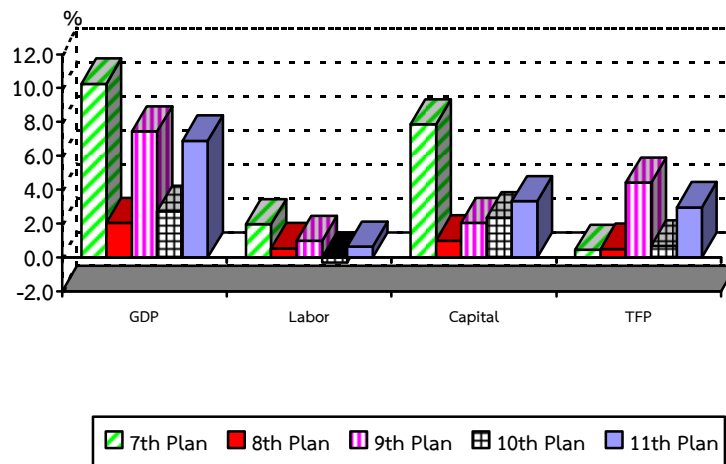
Consider sources of economic contraction, this was contributed from a rise of 3.31% in capital, 2.95% in TFP, and 0.64% in labor. This meant that TFP was the important factor to manufacturing growth according to more efficient business management and inventory of the entrepreneurs, including partial replacement investment in new machineries, thus TFP in this year showed favorable trend compared to 2011.

Considering averaged TFP of manufacturing sector, manufacturing sector of the Ninth Plan grew at the highest rate, and then followed by the first year of Eleventh Plan, the Tenth Plan, the Eighth Plan, and Seventh Plan respectively.

**Table 9 Growth Rate of GDP and Sources of Growth in Manufacturing Sector**

	7 <sup>th</sup> Plan	8 <sup>th</sup> Plan	9 <sup>th</sup> Plan	10 <sup>th</sup> Plan	10 <sup>th</sup> Plan					11 <sup>th</sup> Plan
					2007	2008	2009	2010	2011	2012
<b>GDP Growth</b>	<b>10.25</b>	<b>2.04</b>	<b>7.43</b>	<b>2.74</b>	<b>6.30</b>	<b>3.90</b>	<b>-6.10</b>	<b>13.90</b>	<b>-4.30</b>	<b>6.90</b>
Source of Growth										
Labor	1.96	0.54	0.97	-0.29	0.89	-1.25	-0.60	-0.18	-0.34	0.64
Capital	7.85	1.00	2.03	2.36	2.71	2.54	1.52	3.57	1.44	3.31
TFP	0.44	0.50	4.42	0.68	2.70	2.60	-7.02	10.51	-5.40	2.95

Figure 10 Sources of GDP Growth in Manufacturing Sector



### Services and other sectors

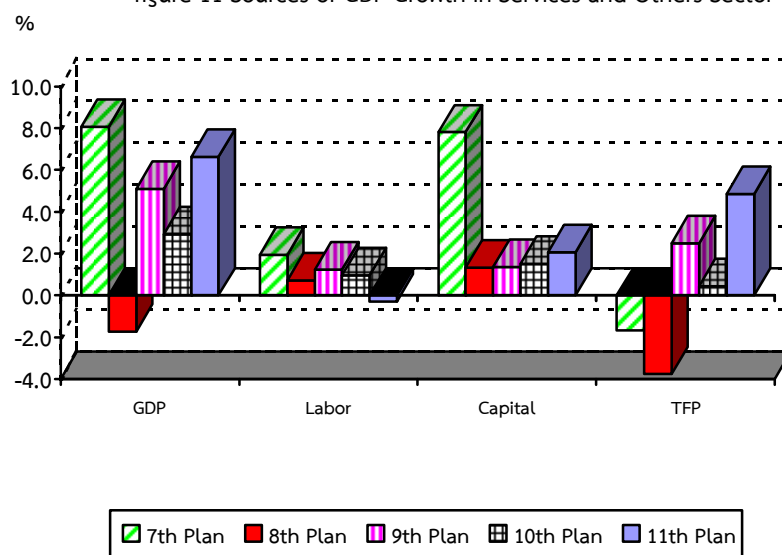
GDP of Services and other sectors increased by 6.62%, compared with a rise of 2.90% in previous year due to the recovered growth of services, particularly on tourism in respond to higher number of inbound tourists with 22.3 million persons compared to 19.1 million persons in 2011 or 16.8% in real-term growth. Consider sources of economic expansion, this was contributed from a rise of 2.06% in capital, and 4.84% in TFP.

Considering averaged TFP of services and other sectors from the Seventh Plan and the Eighth Plan, it exhibited that TFP fall by 1.68%, and 3.77% respectively. However, TFP of the Ninth Plan, the Tenth Plan, and the first year of the Eleventh Plan increased by 2.50%, 0.45%, and 4.84% respectively. The upward trend of averaged TFP of services and other sectors mainly caused from more efficient management and new innovation to increase more efficient production.

Table 10 Growth Rate of GDP and Sources of Growth in Service and Others Sector

	7 <sup>th</sup> Plan	8 <sup>th</sup> Plan	9 <sup>th</sup> Plan	10 <sup>th</sup> Plan	10 <sup>th</sup> Plan					11 <sup>th</sup> Plan
					2007	2008	2009	2010	2011	2012
GDP Growth	8.07	-1.73	5.09	2.92	4.60	1.77	-0.13	5.45	2.90	6.62
Source of Growth										
Labor	1.94	0.71	1.24	0.95	0.71	1.18	1.60	0.99	0.26	-0.28
Capital	7.81	1.33	1.35	1.52	1.89	1.62	1.21	1.74	1.12	2.06
TFP	-1.68	-3.77	2.50	0.45	1.99	-1.03	-2.93	2.72	1.52	4.84

figure 11 Sources of GDP Growth in Services and Others Sector



ANNEX



## Concept, definitions and methodology of Capital Stock of Thailand

### 1. Definition

- **Capital** is the assets used as factors of production of goods and services, usually consisting of fixed assets as well as financial assets. However, it refers here to only fixed assets, which are defined as tangible assets produced within an economy that can be used repeatedly for more than 1 year. They can also be replaced by the newly produced assets. Fixed assets consist of constructions and equipments.

- **Gross Capital Stock (GCS)** is sum of fixed assets accumulated over each asset's life as they are usually disposed after certain period of time when they can no longer provide the production service. GCS is generally measured at one point in time, specifically at the end of the year.

- **Net Capital Stock (NCS)** is the value of fixed assets after deducting depreciation

- **Private Sector Capital Stock** consists of capital stocks owned by private sector, covering both registered and non-registered ones as well as fixed assets acquired by households and non-profit institutions. For households sector, housing is the only assets considered as capital stock.

- **Public Sector Capital Stock** is all capital stock owned by public sector, which consists of central government, local municipalities, state-owned enterprises, all kinds of funds operated and controlled by the government, and independent agencies.

- **Depreciation** refers to depletion of fixed assets. As fixed assets are used repeatedly in production process, they become less productive, worn off and downgraded as new technology emerged. Thus, depreciation should be deducted from fixed assets each year, by how much depending on type of assets and their working life.

- **Service lifetime** is a period of time a fixed asset can be employed for production.

- **Retirement** of fixed assets from production process takes place when they can no longer provide production service.

- **Incremental Capital Output Ratio: ICOR** is an indicator measuring investment capacity in economic system. ICOR reflects how much additional investment is required for 1 unit increase in GDP. The smaller the ICOR, the higher efficiency the last unit of investment provides.

$$\text{ICOR} = \frac{\Delta \text{NCS}_t}{\Delta \text{GDP}_t}$$

- **Capital Productivity: CP** measures units of products produced by 1 unit of capital.

$$\text{CP}_{it} = \frac{\text{GDP}_{it}}{\text{NCS}_{it}}$$

- **Total Factor Productivity: TFP** determines the proportion of GDP growth that is not a result of an increase in factors of production (labor, capital and land). This means TFP measures amount of GDP growth contributed by the residual or technical progress.

$$\begin{aligned} Y_t &= A_t f(K_t, L_t, N_t) \\ &= A K^\alpha L^\beta N^\delta \\ \frac{dY}{Y} &= \alpha \frac{dK}{K} + \beta \frac{dL}{L} + \delta \frac{dN}{N} + \frac{dA}{A} \\ \text{TFP} &= \frac{dY}{Y} - \alpha \frac{dK}{K} - \beta \frac{dL}{L} - \delta \frac{dN}{N} \end{aligned}$$

where

Y	=	Gross Domestic Product (GDP)
A	=	Constant Term
K	=	Capital Stock
L	=	Labor
N	=	Land
$\alpha$	=	Income Share of Capital

$\beta$  = Income Share of Labor

$\delta$  = Income Share of Land

## 2. Coverage

Capital stock covers all fixed assets employed for producing goods and services in an economic system, categorized by institution, e.g. private sector, public sector, which includes central government, local municipalities and state-owned enterprises.

## 3. Methodology

**Perpetual Inventory Method or PIM** is applied here, which is an indirect method. This method is being used widely as this method draws basic data from accumulation of capital stock compiled under the System of National Accounts. As a result, outcomes from PIM are consistent with other national income statistics. The basic concept is to calculate the value of all fixed assets in one year, which covers capital stock at the first year as well as the additional capital acquired in following years subtracted by those disposed from production process. The total value of fixed assets at current price before deducting depreciation is **Gross Capital Stock**. In reality, however, all kind of assets wear out during production process such that the value of assets decline each year. Reduction in such value each year is called **Depreciation**. Thus, to find value of capital stock in existence or **Net Capital Stock** is simply by deducting accumulated depreciation from gross capital stock. An alternative approach for net capital stock is by adding last year net capital stock with investment during the year, then subtracting by depreciation.

(1) Gross Capital Stock

$$GCS_t = \sum \sum GFCF_{it} * (1 - \gamma_{it})$$

GCS = Gross Capital Stock

GFCF = Gross Fixed Capital Formation

i = Type of Assets

t = Year (t = 1,2,3,...,L)

L = Service Lifetime

$\gamma$  = Rate of Retirement

(2) Net Capital Stock

$$NCS_t = NCS_{t-1} + GFCF_t - COFC_t$$

NCS = Net Capital Stock

GFCF = Gross Fixed Capital Formation

COFC = Annual Depreciation

ตารางสถิติ

STATISTICAL TABLES

**TABLE**

TABLE 1 GROSS CAPITAL STOCK OF THAILAND AT CURRENT REPLACEMENT COST

TABLE 2 GROSS CAPITAL STOCK OF THAILAND AT 1988 PRICES

TABLE 3 GROSS CAPITAL STOCK OF PRIVATE SECTOR AT CURRENT REPLACEMENT COST

TABLE 4 GROSS CAPITAL STOCK OF PRIVATE SECTOR AT 1988 PRICES

TABLE 5 GROSS CAPITAL STOCK OF PUBLIC SECTOR AT CURRENT REPLACEMENT COST

TABLE 6 GROSS CAPITAL STOCK OF PUBLIC SECTOR AT 1988 PRICES

TABLE 7 NET CAPITAL STOCK OF THAILAND AT CURRENT REPLACEMENT COST

TABLE 8 NET CAPITAL STOCK OF THAILAND AT 1988 PRICES

TABLE 9 NET CAPITAL STOCK OF PRIVATE SECTOR AT CURRENT REPLACEMENT COST

TABLE 10 NET CAPITAL STOCK OF PRIVATE SECTOR AT 1988 PRICES

TABLE 11 NET CAPITAL STOCK OF PUBLIC SECTOR AT CURRENT REPLACEMENT COST

TABLE 12 NET CAPITAL STOCK OF PUBLIC SECTOR AT 1988 PRICES

TABLE 13 ANNUAL DEPRECIATION OF THAILAND AT CURRENT REPLACEMENT COST

TABLE 14 ANNUAL DEPRECIATION OF THAILAND AT 1988 PRICES

TABLE 15 ANNUAL DEPRECIATION OF PRIVATE SECTOR AT CURRENT REPLACEMENT COST

TABLE 16 ANNUAL DEPRECIATION OF PRIVATE SECTOR AT 1988 PRICES

TABLE 17 ANNUAL DEPRECIATION OF PUBLIC SECTOR AT CURRENT REPLACEMENT COST

TABLE 18 ANNUAL DEPRECIATION OF PUBLIC SECTOR AT 1988 PRICES

**TABLE 1 GROSS CAPITAL STOCK OF THAILAND AT CURRENT REPLACEMENT COST**

(Unit - Millions of Baht)

Sector	1999	2000	2001	2002	2003	2004	2005	2006	2007	2008	2009	2010	2011r	2012p
<b>Agriculture</b>	<b>1,479,737</b>	<b>1,633,227</b>	<b>1,802,307</b>	<b>1,861,871</b>	<b>1,968,690</b>	<b>2,119,517</b>	<b>2,375,763</b>	<b>2,532,135</b>	<b>2,680,060</b>	<b>3,042,909</b>	<b>3,084,311</b>	<b>3,377,745</b>	<b>3,621,126</b>	<b>3,900,873</b>
Agriculture, Hunting and Forestry	1,183,790	1,306,582	1,441,846	1,489,497	1,574,952	1,695,614	1,900,610	2,025,708	2,144,048	2,434,327	2,467,449	2,702,196	2,896,912	3,121,901
Fishing	295,947	326,645	360,461	372,374	393,738	423,903	475,153	506,427	536,012	608,582	616,862	675,549	724,214	778,972
<b>Non-Agriculture</b>	<b>19,660,797</b>	<b>21,086,679</b>	<b>22,874,606</b>	<b>23,358,302</b>	<b>24,586,721</b>	<b>26,419,949</b>	<b>29,324,293</b>	<b>31,646,690</b>	<b>33,193,210</b>	<b>36,675,837</b>	<b>36,650,261</b>	<b>39,741,470</b>	<b>43,285,180</b>	<b>46,173,721</b>
Mining and Quarrying	279,260	319,720	357,643	359,476	369,146	393,095	449,993	482,115	494,985	531,487	549,843	603,652	644,739	690,708
Manufacturing	3,658,310	4,020,896	4,497,170	4,558,838	4,722,068	5,028,012	5,694,940	6,114,232	6,287,389	6,742,321	6,945,220	7,581,631	8,119,616	8,670,886
Electricity, Gas and Water Supply	1,486,987	1,585,682	1,698,786	1,795,743	1,973,798	2,189,948	2,456,970	2,756,372	3,005,290	3,450,073	3,315,520	3,799,586	4,030,895	4,326,459
Construction	654,570	752,394	843,482	835,903	849,628	897,020	1,027,060	1,092,231	1,108,688	1,169,528	1,220,960	1,340,292	1,426,477	1,496,808
Wholesale and Retail Trade; Repair of Motor Vehicles, Motorcycles and Personal and Household Goods	1,786,775	1,926,787	2,075,717	2,083,365	2,149,449	2,287,819	2,511,431	2,663,327	2,731,353	2,959,514	2,961,800	3,191,663	3,422,217	3,634,139
Hotels and Restaurants	1,037,470	1,112,143	1,152,310	1,133,992	1,146,494	1,199,483	1,301,369	1,345,305	1,348,718	1,468,683	1,469,768	1,594,422	1,723,972	1,850,072
Transport, Storage and Communications	3,550,180	3,828,136	4,313,014	4,493,395	4,840,251	5,283,977	6,045,043	6,524,968	6,780,381	7,582,100	7,649,089	8,209,819	8,944,567	9,481,966
Financial Intermediation	287,874	312,209	338,394	344,610	356,611	380,800	424,822	454,000	468,442	506,903	512,570	558,958	596,058	634,926
Real Estate, Renting and Business Activities	4,748,532	4,869,230	5,077,910	5,226,278	5,593,469	6,044,884	6,481,650	7,063,318	7,544,776	8,442,530	8,201,394	8,716,608	9,696,358	10,330,883
Public Administration and Defence; Compulsory Social Security	350,829	380,634	403,896	399,958	428,148	454,644	490,514	516,119	539,903	624,128	624,752	672,427	728,413	774,667
Education	490,501	520,604	554,323	562,659	583,675	598,099	637,157	671,097	697,900	773,754	774,562	841,199	953,735	1,017,735
Health and Social Work	857,670	965,822	1,030,430	1,016,632	991,951	1,047,568	1,129,953	1,225,478	1,400,195	1,548,527	1,548,645	1,680,702	1,964,071	2,086,889
Other Community, Social and Personal Service Activities	471,839	492,422	531,531	547,453	582,033	614,600	673,391	738,128	785,190	876,289	876,138	950,511	1,034,062	1,177,583
Private Households with Employed Persons	-	-	-	-	-	-	-	-	-	-	-	-	-	-
<b>TOTAL</b>	<b>21,140,534</b>	<b>22,719,906</b>	<b>24,676,913</b>	<b>25,220,173</b>	<b>26,555,411</b>	<b>28,539,466</b>	<b>31,700,056</b>	<b>34,178,825</b>	<b>35,873,270</b>	<b>39,718,746</b>	<b>39,734,572</b>	<b>43,119,215</b>	<b>46,906,306</b>	<b>50,074,594</b>

**TABLE 1-1 GROWTH RATE OF GROSS CAPITAL STOCK OF THAILAND AT CURRENT REPLACEMENT COST**

(Unit - Percentage)

Sector	1999	2000	2001	2002	2003	2004	2005	2006	2007	2008	2009	2010	2011r	2012p
<b>Agriculture</b>	<b>-2.6</b>	<b>10.4</b>	<b>10.4</b>	<b>3.3</b>	<b>5.7</b>	<b>7.7</b>	<b>12.1</b>	<b>6.6</b>	<b>5.8</b>	<b>13.5</b>	<b>1.4</b>	<b>9.5</b>	<b>7.2</b>	<b>7.7</b>
Agriculture, Hunting and Forestry	-2.6	10.4	10.4	3.3	5.7	7.7	12.1	6.6	5.8	13.5	1.4	9.5	7.2	7.8
Fishing	-2.6	10.4	10.4	3.3	5.7	7.7	12.1	6.6	5.8	13.5	1.4	9.5	7.2	7.6
<b>Non-Agriculture</b>	<b>-1.1</b>	<b>7.3</b>	<b>8.5</b>	<b>2.1</b>	<b>5.3</b>	<b>7.5</b>	<b>11.0</b>	<b>7.9</b>	<b>4.9</b>	<b>10.5</b>	<b>-0.1</b>	<b>8.4</b>	<b>8.9</b>	<b>6.7</b>
Mining and Quarrying	-6.2	14.5	11.9	0.5	2.7	6.5	14.5	7.1	2.7	7.4	3.5	9.8	6.8	7.1
Manufacturing	-5.0	9.9	11.8	1.4	3.6	6.5	13.3	7.4	2.8	7.2	3.0	9.2	7.1	6.8
Electricity, Gas and Water Supply	7.2	6.6	7.1	5.7	9.9	11.0	12.2	12.2	9.0	14.8	-3.9	14.6	6.1	7.3
Construction	-5.8	14.9	12.1	-0.9	1.6	5.6	14.5	6.3	1.5	5.5	4.4	9.8	6.4	4.9
Wholesale and Retail Trade; Repair of Motor Vehicles, Motorcycles and Personal and Household Goods	-4.3	7.8	7.7	0.4	3.2	6.4	9.8	6.0	2.6	8.4	0.1	7.8	7.2	6.2
Hotels and Restaurants	-2.7	7.2	3.6	-1.6	1.1	4.6	8.5	3.4	0.3	8.9	0.1	8.5	8.1	7.3
Transport, Storage and Communications	-1.3	7.8	12.7	4.2	7.7	9.2	14.4	7.9	3.9	11.8	0.9	7.3	8.9	6.0
Financial Intermediation	-7.2	8.5	8.4	1.8	3.5	6.8	11.6	6.9	3.2	8.2	1.1	9.1	6.6	6.5
Real Estate, Renting and Business Activities	1.9	2.5	4.3	2.9	7.0	8.1	7.2	9.0	6.8	11.9	-2.9	6.3	11.2	6.5
Public Administration and Defence; Compulsory Social Security	0.3	8.5	6.1	-1.0	7.0	6.2	7.9	5.2	4.6	15.6	0.1	7.6	8.3	6.3
Education	0.1	6.1	6.5	1.5	3.7	2.5	6.5	5.3	4.0	10.9	0.1	8.6	13.4	6.7
Health and Social Work	4.4	12.6	6.7	-1.3	-2.4	5.6	7.9	8.5	14.3	10.6	0.0	8.5	16.9	6.3
Other Community, Social and Personal Service Activities	-2.5	4.4	7.9	3.0	6.3	5.6	9.6	9.6	6.4	11.6	-0.0	8.5	8.8	13.9
Private Households with Employed Persons	-	-	-	-	-	-	-	-	-	-	-	-	-	-
<b>TOTAL</b>	<b>-1.2</b>	<b>7.5</b>	<b>8.6</b>	<b>2.2</b>	<b>5.3</b>	<b>7.5</b>	<b>11.1</b>	<b>7.8</b>	<b>5.0</b>	<b>10.7</b>	<b>0.0</b>	<b>8.5</b>	<b>8.8</b>	<b>6.8</b>

**TABLE 2 GROSS CAPITAL STOCK OF THAILAND AT 1988 PRICES**

(Unit - Millions of Baht)

Sector	1999	2000	2001	2002	2003	2004	2005	2006	2007	2008	2009	2010	2011r	2012p
<b>Agriculture</b>	<b>858,289</b>	<b>884,251</b>	<b>909,672</b>	<b>940,505</b>	<b>971,610</b>	<b>1,004,443</b>	<b>1,044,953</b>	<b>1,088,558</b>	<b>1,135,574</b>	<b>1,183,048</b>	<b>1,223,321</b>	<b>1,288,275</b>	<b>1,320,945</b>	<b>1,377,435</b>
Agriculture, Hunting and Forestry	686,631	707,401	727,738	752,404	777,288	803,554	835,962	870,846	908,459	946,438	978,657	1,030,620	1,056,779	1,101,826
Fishing	171,658	176,850	181,934	188,101	194,322	200,889	208,991	217,712	227,115	236,610	244,664	257,655	264,166	275,609
<b>Non-Agriculture</b>	<b>11,304,754</b>	<b>11,546,369</b>	<b>11,739,841</b>	<b>11,940,257</b>	<b>12,199,536</b>	<b>12,533,543</b>	<b>12,929,943</b>	<b>13,342,353</b>	<b>13,759,711</b>	<b>14,197,084</b>	<b>14,551,846</b>	<b>15,078,727</b>	<b>15,438,164</b>	<b>15,980,899</b>
Mining and Quarrying	156,960	163,310	164,193	165,094	168,054	173,463	180,277	186,717	193,456	200,712	205,633	217,743	221,037	231,267
Manufacturing	2,031,026	2,048,644	2,073,929	2,102,857	2,144,985	2,206,440	2,281,678	2,364,262	2,446,657	2,534,426	2,590,720	2,726,169	2,769,282	2,890,723
Electricity, Gas and Water Supply	874,615	914,424	951,992	995,711	1,033,621	1,079,051	1,126,559	1,179,205	1,233,867	1,285,689	1,335,831	1,352,446	1,427,659	1,470,755
Construction	376,292	389,053	389,199	386,508	388,222	397,917	411,173	422,961	436,003	451,837	461,270	488,499	494,240	512,378
Wholesale and Retail Trade; Repair of Motor Vehicles, Motorcycles and Personal and Household Goods	1,082,855	1,100,851	1,099,631	1,097,339	1,105,342	1,124,148	1,149,242	1,172,914	1,197,450	1,224,921	1,242,208	1,287,168	1,299,153	1,338,941
Hotels and Restaurants	548,353	547,843	547,679	549,356	554,521	565,299	584,226	605,009	628,966	655,630	647,782	700,148	737,401	763,766
Transport, Storage and Communications	1,946,738	2,011,209	2,067,977	2,106,034	2,164,214	2,222,660	2,320,646	2,407,398	2,491,786	2,584,030	2,564,385	2,623,941	2,633,519	2,728,392
Financial Intermediation	181,779	183,629	183,203	185,436	186,872	191,578	196,759	202,317	208,635	215,314	219,439	229,174	232,156	240,767
Real Estate, Renting and Business Activities	2,788,017	2,832,519	2,884,463	2,950,064	3,027,040	3,120,315	3,223,397	3,330,231	3,435,145	3,540,499	3,637,030	3,743,223	3,850,369	3,969,071
Public Administration and Defence; Compulsory Social Security	211,831	219,922	223,784	223,773	225,074	227,920	232,654	238,082	247,032	257,407	267,189	278,467	287,103	295,716
Education	291,010	296,128	301,596	307,825	302,429	297,812	300,035	306,178	315,375	317,860	329,041	344,443	358,328	375,170
Health and Social Work	591,990	609,691	620,459	633,163	643,482	655,604	644,694	643,954	632,859	614,038	627,557	651,447	674,069	701,047
Other Community, Social and Personal Service Activities	223,288	229,146	231,736	237,097	255,680	271,336	278,603	283,125	292,480	314,721	423,761	435,859	453,848	462,906
Private Households with Employed Persons	-	-	-	-	-	-	-	-	-	-	-	-	-	-
<b>TOTAL</b>	<b>12,163,043</b>	<b>12,430,620</b>	<b>12,649,513</b>	<b>12,880,762</b>	<b>13,171,146</b>	<b>13,537,986</b>	<b>13,974,896</b>	<b>14,430,911</b>	<b>14,895,285</b>	<b>15,380,132</b>	<b>15,775,167</b>	<b>16,367,002</b>	<b>16,759,109</b>	<b>17,358,334</b>

**TABLE 2-1 GROWTH RATE OF GROSS CAPITAL STOCK OF THAILAND AT 1988 PRICES**

(Unit - Percentage)

Sector	1999	2000	2001	2002	2003	2004	2005	2006	2007	2008	2009	2010	2011r	2012p
<b>Agriculture</b>	<b>2.5</b>	<b>3.0</b>	<b>2.9</b>	<b>3.4</b>	<b>3.3</b>	<b>3.4</b>	<b>4.0</b>	<b>4.2</b>	<b>4.3</b>	<b>4.2</b>	<b>3.4</b>	<b>5.3</b>	<b>2.5</b>	<b>4.3</b>
Agriculture, Hunting and Forestry	2.5	3.0	2.9	3.4	3.3	3.4	4.0	4.2	4.3	4.2	3.4	5.3	2.5	4.3
Fishing	2.5	3.0	2.9	3.4	3.3	3.4	4.0	4.2	4.3	4.2	3.4	5.3	2.5	4.3
<b>Non-Agriculture</b>	<b>2.1</b>	<b>2.1</b>	<b>1.7</b>	<b>1.7</b>	<b>2.2</b>	<b>2.7</b>	<b>3.2</b>	<b>3.2</b>	<b>3.1</b>	<b>3.2</b>	<b>2.5</b>	<b>3.6</b>	<b>2.4</b>	<b>3.5</b>
Mining and Quarrying	0.9	4.0	0.5	0.5	1.8	3.2	3.9	3.6	3.6	3.8	2.5	5.9	1.5	4.6
Manufacturing	1.3	0.9	1.2	1.4	2.0	2.9	3.4	3.6	3.5	3.6	2.2	5.2	1.6	4.4
Electricity, Gas and Water Supply	8.3	4.6	4.1	4.6	3.8	4.4	4.4	4.7	4.6	4.2	3.9	1.2	5.6	3.0
Construction	1.9	3.4	0.0	-0.7	0.4	2.5	3.3	2.9	3.1	3.6	2.1	5.9	1.2	3.7
Wholesale and Retail Trade; Repair of Motor Vehicles, Motorcycles and Personal and Household Goods	0.0	1.7	-0.1	-0.2	0.7	1.7	2.2	2.1	2.1	2.3	1.4	3.6	0.9	3.1
Hotels and Restaurants	0.1	-0.1	-0.0	0.3	0.9	1.9	3.3	3.6	4.0	4.2	-1.2	8.1	5.3	3.6
Transport, Storage and Communications	1.4	3.3	2.8	1.8	2.8	2.7	4.4	3.7	3.5	3.7	-0.8	2.3	0.4	3.6
Financial Intermediation	-1.3	1.0	-0.2	1.2	0.8	2.5	2.7	2.8	3.1	3.2	1.9	4.4	1.3	3.7
Real Estate, Renting and Business Activities	1.4	1.6	1.8	2.3	2.6	3.1	3.3	3.3	3.2	3.1	2.7	2.9	2.9	3.1
Public Administration and Defence; Compulsory Social Security	3.5	3.8	1.8	-0.0	0.6	1.3	2.1	2.3	3.8	4.2	3.8	4.2	3.1	3.0
Education	3.3	1.8	1.8	2.1	-1.8	-1.5	0.7	2.0	3.0	0.8	3.5	4.7	4.0	4.7
Health and Social Work	5.8	3.0	1.8	2.0	1.6	1.9	-1.7	-0.1	-1.7	-3.0	2.2	3.8	3.5	4.0
Other Community, Social and Personal Service Activities	7.3	2.6	1.1	2.3	7.8	6.1	2.7	1.6	3.3	7.6	34.6	2.9	4.1	2.0
Private Households with Employed Persons	-	-	-	-	-	-	-	-	-	-	-	-	-	-
<b>TOTAL</b>	<b>2.1</b>	<b>2.2</b>	<b>1.8</b>	<b>1.8</b>	<b>2.3</b>	<b>2.8</b>	<b>3.2</b>	<b>3.3</b>	<b>3.2</b>	<b>3.3</b>	<b>2.6</b>	<b>3.8</b>	<b>2.4</b>	<b>3.6</b>

**TABLE 3 GROSS CAPITAL STOCK OF PRIVATE SECTOR AT CURRENT REPLACEMENT COST**

(Unit - Millions of Baht)

Sector	1999	2000	2001	2002	2003	2004	2005	2006	2007	2008	2009	2010	2011r	2012p
<b>Agriculture</b>	<b>755,977</b>	<b>856,770</b>	<b>957,958</b>	<b>967,155</b>	<b>986,487</b>	<b>1,037,807</b>	<b>1,192,177</b>	<b>1,275,701</b>	<b>1,299,518</b>	<b>1,369,692</b>	<b>1,424,480</b>	<b>1,563,051</b>	<b>1,662,093</b>	<b>1,779,437</b>
Agriculture, Hunting and Forestry	677,158	763,062	850,802	863,196	887,410	938,417	1,072,100	1,146,204	1,177,669	1,263,075	1,305,567	1,431,910	1,525,589	1,633,964
Fishing	78,819	93,708	107,156	103,959	99,077	99,390	120,077	129,497	121,849	106,617	118,913	131,141	136,504	145,473
<b>Non-Agriculture</b>	<b>14,613,028</b>	<b>15,635,378</b>	<b>16,956,562</b>	<b>17,202,083</b>	<b>17,929,947</b>	<b>19,162,714</b>	<b>21,163,759</b>	<b>22,763,756</b>	<b>23,635,014</b>	<b>25,730,857</b>	<b>25,768,911</b>	<b>27,748,923</b>	<b>30,050,526</b>	<b>32,051,586</b>
Mining and Quarrying	245,511	281,353	315,853	315,304	320,287	338,609	389,532	416,353	423,182	445,611	463,881	509,047	541,140	577,992
Manufacturing	3,483,467	3,825,082	4,292,700	4,347,445	4,484,871	4,774,984	5,418,351	5,822,380	5,977,061	6,389,478	6,568,384	7,161,626	7,694,192	8,223,553
Electricity, Gas and Water Supply	223,048	237,852	254,818	269,361	296,070	328,492	368,545	413,456	450,793	517,511	497,328	569,938	604,663	610,710
Construction	374,396	450,570	519,839	499,611	483,911	498,913	583,853	604,425	583,195	572,313	638,269	676,199	718,640	768,585
Wholesale and Retail Trade; Repair of Motor Vehicles, Motorcycles and Personal and Household Goods	1,771,858	1,911,030	2,059,127	2,066,677	2,131,481	2,268,516	2,490,531	2,640,979	2,707,826	2,932,576	2,935,508	3,163,302	3,391,765	3,602,055
Hotels and Restaurants	754,233	807,293	836,534	816,956	816,692	849,006	917,769	946,212	937,457	1,002,099	1,006,032	1,083,871	1,098,199	1,184,086
Transport, Storage and Communications	1,729,969	1,862,318	2,115,885	2,200,669	2,370,012	2,590,618	2,933,194	3,175,004	3,225,323	3,544,691	3,553,234	3,824,877	3,997,958	4,270,219
Financial Intermediation	243,744	265,369	289,502	293,823	302,408	318,848	356,350	379,568	388,583	415,784	420,357	456,582	488,001	519,574
Real Estate, Renting and Business Activities	4,463,669	4,558,085	4,735,961	4,860,076	5,187,232	5,594,888	5,984,510	6,512,278	6,937,500	7,728,373	7,496,521	7,947,843	8,853,040	9,416,979
Public Administration and Defence; Compulsory Social Security	-	-	-	-	-	-	-	-	-	-	-	-	-	-
Education	356,590	377,901	402,418	405,353	415,774	423,340	449,344	472,012	485,091	527,941	529,249	570,221	631,673	676,620
Health and Social Work	623,519	701,080	748,054	732,409	706,605	741,479	796,882	861,932	973,239	1,056,579	1,060,298	1,139,526	1,344,556	1,420,903
Other Community, Social and Personal Service Activities	343,024	357,445	385,871	394,399	414,604	435,021	474,898	519,157	545,764	597,901	599,850	645,891	686,699	780,310
Private Households with Employed Persons	-	-	-	-	-	-	-	-	-	-	-	-	-	-
<b>TOTAL</b>	<b>15,369,005</b>	<b>16,492,148</b>	<b>17,914,520</b>	<b>18,169,238</b>	<b>18,916,434</b>	<b>20,200,521</b>	<b>22,355,936</b>	<b>24,039,457</b>	<b>24,934,532</b>	<b>27,100,549</b>	<b>27,193,391</b>	<b>29,311,974</b>	<b>31,712,619</b>	<b>33,831,023</b>

**TABLE 3-1 GROWTH RATE OF GROSS CAPITAL STOCK OF PRIVATE SECTOR AT CURRENT REPLACEMENT COST**

(Unit - Percentage)

Sector	1999	2000	2001	2002	2003	2004	2005	2006	2007	2008	2009	2010	2011r	2012p
<b>Agriculture</b>	<b>-10.3</b>	<b>13.3</b>	<b>11.8</b>	<b>1.0</b>	<b>2.0</b>	<b>5.2</b>	<b>14.9</b>	<b>7.0</b>	<b>1.9</b>	<b>5.4</b>	<b>4.0</b>	<b>9.7</b>	<b>6.3</b>	<b>7.1</b>
Agriculture, Hunting and Forestry	-8.7	12.7	11.5	1.5	2.8	5.7	14.2	6.9	2.7	7.3	3.4	9.7	6.5	7.1
Fishing	-21.8	18.9	14.4	-3.0	-4.7	0.3	20.8	7.8	-5.9	-12.5	11.5	10.3	4.1	6.6
<b>Non-Agriculture</b>	<b>-3.0</b>	<b>7.0</b>	<b>8.4</b>	<b>1.4</b>	<b>4.2</b>	<b>6.9</b>	<b>10.4</b>	<b>7.6</b>	<b>3.8</b>	<b>8.9</b>	<b>0.1</b>	<b>7.7</b>	<b>8.3</b>	<b>6.7</b>
Mining and Quarrying	-7.8	14.6	12.3	-0.2	1.6	5.7	15.0	6.9	1.6	5.3	4.1	9.7	6.3	6.8
Manufacturing	-5.1	9.8	12.2	1.3	3.2	6.5	13.5	7.5	2.7	6.9	2.8	9.0	7.4	6.9
Electricity, Gas and Water Supply	7.2	6.6	7.1	5.7	9.9	11.0	12.2	12.2	9.0	14.8	-3.9	14.6	6.1	1.0
Construction	-12.9	20.3	15.4	-3.9	-3.1	3.1	17.0	3.5	-3.5	-1.9	11.5	5.9	6.3	6.9
Wholesale and Retail Trade; Repair of Motor Vehicles, Motorcycles and Personal and Household Goods	-4.3	7.9	7.7	0.4	3.1	6.4	9.8	6.0	2.5	8.3	0.1	7.8	7.2	6.2
Hotels and Restaurants	-4.8	7.0	3.6	-2.3	-0.0	4.0	8.1	3.1	-0.9	6.9	0.4	7.7	1.3	7.8
Transport, Storage and Communications	-6.1	7.7	13.6	4.0	7.7	9.3	13.2	8.2	1.6	9.9	0.2	7.6	4.5	6.8
Financial Intermediation	-8.5	8.9	9.1	1.5	2.9	5.4	11.8	6.5	2.4	7.0	1.1	8.6	6.9	6.5
Real Estate, Renting and Business Activities	1.5	2.1	3.9	2.6	6.7	7.9	7.0	8.8	6.5	11.4	-3.0	6.0	11.4	6.4
Public Administration and Defence; Compulsory Social Security	-	-	-	-	-	-	-	-	-	-	-	-	-	-
Education	-2.1	6.0	6.5	0.7	2.6	1.8	6.1	5.0	2.8	8.8	0.2	7.7	10.8	7.1
Health and Social Work	2.2	12.4	6.7	-2.1	-3.5	4.9	7.5	8.2	12.9	8.6	0.4	7.5	18.0	5.7
Other Community, Social and Personal Service Activities	-4.6	4.2	8.0	2.2	5.1	4.9	9.2	9.3	5.1	9.6	0.3	7.7	6.3	13.6
Private Households with Employed Persons	-	-	-	-	-	-	-	-	-	-	-	-	-	-
<b>TOTAL</b>	<b>-3.4</b>	<b>7.3</b>	<b>8.6</b>	<b>1.4</b>	<b>4.1</b>	<b>6.8</b>	<b>10.7</b>	<b>7.5</b>	<b>3.7</b>	<b>8.7</b>	<b>0.3</b>	<b>7.8</b>	<b>8.2</b>	<b>6.7</b>

**TABLE 4 GROSS CAPITAL STOCK OF PRIVATE SECTOR AT 1988 PRICES**

(Unit - Millions of Baht)

Sector	1999	2000	2001	2002	2003	2004	2005	2006	2007	2008	2009	2010	2011r	2012p
<b>Agriculture</b>	<b>426,243</b>	<b>426,277</b>	<b>425,143</b>	<b>430,513</b>	<b>438,264</b>	<b>447,593</b>	<b>462,476</b>	<b>478,211</b>	<b>494,318</b>	<b>511,012</b>	<b>519,699</b>	<b>550,478</b>	<b>556,395</b>	<b>582,991</b>
Agriculture, Hunting and Forestry	384,199	386,819	388,568	395,410	403,946	413,759	428,228	443,603	459,580	476,013	486,122	514,162	521,594	546,883
Fishing	42,044	39,458	36,575	35,103	34,318	33,834	34,248	34,608	34,738	34,999	33,577	36,316	34,801	36,108
<b>Non-Agriculture</b>	<b>8,465,594</b>	<b>8,565,681</b>	<b>8,641,355</b>	<b>8,736,578</b>	<b>8,899,631</b>	<b>9,127,789</b>	<b>9,400,010</b>	<b>9,677,996</b>	<b>9,940,312</b>	<b>10,226,840</b>	<b>10,434,439</b>	<b>10,858,927</b>	<b>11,052,479</b>	<b>11,453,088</b>
Mining and Quarrying	136,748	140,909	140,583	140,166	141,901	145,815	151,150	155,980	160,851	166,281	169,274	179,292	180,910	189,322
Manufacturing	1,929,724	1,943,559	1,966,706	1,990,981	2,034,822	2,094,959	2,169,125	2,247,852	2,322,443	2,400,896	2,451,315	2,582,401	2,621,192	2,737,835
Electricity, Gas and Water Supply	131,192	137,164	142,799	149,357	155,043	161,858	168,984	176,881	185,080	192,853	200,375	202,867	214,204	216,649
Construction	209,622	216,168	210,662	201,052	199,125	203,334	209,904	214,033	217,694	223,628	224,019	238,199	234,486	245,506
Wholesale and Retail Trade; Repair of Motor Vehicles, Motorcycles and Personal and Household Goods	1,073,964	1,091,753	1,090,375	1,088,027	1,095,923	1,114,560	1,139,479	1,162,938	1,187,172	1,214,314	1,231,315	1,275,985	1,287,715	1,327,248
Hotels and Restaurants	400,875	396,294	392,547	390,970	393,136	399,834	412,305	425,794	440,611	457,737	449,120	487,014	510,791	529,587
Transport, Storage and Communications	1,002,252	1,007,771	1,014,054	1,025,391	1,052,158	1,084,161	1,137,515	1,182,376	1,225,301	1,285,265	1,212,960	1,267,765	1,249,747	1,301,861
Financial Intermediation	155,910	157,476	156,669	157,859	159,885	162,549	166,965	171,373	176,018	180,870	183,583	192,122	193,931	201,301
Real Estate, Renting and Business Activities	2,618,657	2,649,274	2,688,426	2,741,443	2,806,701	2,888,141	2,978,518	3,071,984	3,162,412	3,254,129	3,335,482	3,425,372	3,519,566	3,623,745
Public Administration and Defence; Compulsory Social Security	-	-	-	-	-	-	-	-	-	-	-	-	-	-
Education	215,309	218,343	222,965	226,792	218,569	212,227	213,126	217,735	221,953	217,737	226,345	236,304	241,996	252,758
Health and Social Work	443,329	455,369	463,290	470,475	474,488	481,022	470,377	467,962	454,466	433,115	443,455	458,140	471,721	493,479
Other Community, Social and Personal Service Activities	148,012	151,601	152,279	154,065	167,880	179,329	182,562	183,088	186,311	200,015	307,196	313,466	326,220	333,797
Private Households with Employed Persons	-	-	-	-	-	-	-	-	-	-	-	-	-	-
<b>TOTAL</b>	<b>8,891,837</b>	<b>8,991,958</b>	<b>9,066,498</b>	<b>9,167,091</b>	<b>9,337,895</b>	<b>9,575,382</b>	<b>9,862,486</b>	<b>10,156,207</b>	<b>10,434,630</b>	<b>10,737,852</b>	<b>10,954,138</b>	<b>11,409,405</b>	<b>11,608,874</b>	<b>12,036,079</b>

**TABLE 4-1 GROWTH RATE OF GROSS CAPITAL STOCK OF PRIVATE SECTOR AT 1988 PRICES**

(Unit - Percentage)

Sector	1999	2000	2001	2002	2003	2004	2005	2006	2007	2008	2009	2010	2011r	2012p
<b>Agriculture</b>	<b>-2.4</b>	<b>0.0</b>	<b>-0.3</b>	<b>1.3</b>	<b>1.8</b>	<b>2.1</b>	<b>3.3</b>	<b>3.4</b>	<b>3.4</b>	<b>3.4</b>	<b>1.7</b>	<b>5.9</b>	<b>1.1</b>	<b>4.8</b>
Agriculture, Hunting and Forestry	-1.4	0.7	0.5	1.8	2.2	2.4	3.5	3.6	3.6	3.6	2.1	5.8	1.4	4.8
Fishing	-11.1	-6.2	-7.3	-4.0	-2.2	-1.4	1.2	1.1	0.4	0.8	-4.1	8.2	-4.2	3.8
<b>Non-Agriculture</b>	<b>0.7</b>	<b>1.2</b>	<b>0.9</b>	<b>1.1</b>	<b>1.9</b>	<b>2.6</b>	<b>3.0</b>	<b>3.0</b>	<b>2.7</b>	<b>2.9</b>	<b>2.0</b>	<b>4.1</b>	<b>1.8</b>	<b>3.6</b>
Mining and Quarrying	-0.2	3.0	-0.2	-0.3	1.2	2.8	3.7	3.2	3.1	3.4	1.8	5.9	0.9	4.6
Manufacturing	1.2	0.7	1.2	1.2	2.2	3.0	3.5	3.6	3.3	3.4	2.1	5.3	1.5	4.4
Electricity, Gas and Water Supply	8.3	4.6	4.1	4.6	3.8	4.4	4.4	4.7	4.6	4.2	3.9	1.2	5.6	1.1
Construction	-2.6	3.1	-2.5	-4.6	-1.0	2.1	3.2	2.0	1.7	2.7	0.2	6.3	-1.6	4.7
Wholesale and Retail Trade; Repair of Motor Vehicles, Motorcycles and Personal and Household Goods	0.0	1.7	-0.1	-0.2	0.7	1.7	2.2	2.1	2.1	2.3	1.4	3.6	0.9	3.1
Hotels and Restaurants	-1.4	-1.1	-0.9	-0.4	0.6	1.7	3.1	3.3	3.5	3.9	-1.9	8.4	4.9	3.7
Transport, Storage and Communications	-0.8	0.6	0.6	1.1	2.6	3.0	4.9	3.9	3.6	4.9	-5.6	4.5	-1.4	4.2
Financial Intermediation	-2.3	1.0	-0.5	0.8	1.3	1.7	2.7	2.6	2.7	2.8	1.5	4.7	0.9	3.8
Real Estate, Renting and Business Activities	0.9	1.2	1.5	2.0	2.4	2.9	3.1	3.1	2.9	2.9	2.5	2.7	2.7	3.0
Public Administration and Defence; Compulsory Social Security	-	-	-	-	-	-	-	-	-	-	-	-	-	-
Education	1.1	1.4	2.1	1.7	-3.6	-2.9	0.4	2.2	1.9	-1.9	4.0	4.4	2.4	4.4
Health and Social Work	4.1	2.7	1.7	1.6	0.9	1.4	-2.2	-0.5	-2.9	-4.7	2.4	3.3	3.0	4.6
Other Community, Social and Personal Service Activities	6.1	2.4	0.4	1.2	9.0	6.8	1.8	0.3	1.8	7.4	53.6	2.0	4.1	2.3
Private Households with Employed Persons	-	-	-	-	-	-	-	-	-	-	-	-	-	-
<b>TOTAL</b>	<b>0.6</b>	<b>1.1</b>	<b>0.8</b>	<b>1.1</b>	<b>1.9</b>	<b>2.5</b>	<b>3.0</b>	<b>3.0</b>	<b>2.7</b>	<b>2.9</b>	<b>2.0</b>	<b>4.2</b>	<b>1.7</b>	<b>3.7</b>

**TABLE 5 GROSS CAPITAL STOCK OF PUBLIC SECTOR AT CURRENT REPLACEMENT COST**

(Unit - Millions of Baht)

Sector	1999	2000	2001	2002	2003	2004	2005	2006	2007	2008	2009	2010	2011r	2012p
<b>Agriculture</b>	<b>723,760</b>	<b>776,457</b>	<b>844,349</b>	<b>894,716</b>	<b>982,203</b>	<b>1,081,710</b>	<b>1,183,586</b>	<b>1,256,434</b>	<b>1,380,542</b>	<b>1,673,217</b>	<b>1,659,831</b>	<b>1,814,694</b>	<b>1,959,033</b>	<b>2,121,436</b>
Agriculture, Hunting and Forestry	506,632	543,520	591,044	626,301	687,542	757,197	828,510	879,504	966,379	1,171,252	1,161,882	1,270,286	1,371,323	1,487,937
Fishing	217,128	232,937	253,305	268,415	294,661	324,513	355,076	376,930	414,163	501,965	497,949	544,408	587,710	633,499
<b>Non-Agriculture</b>	<b>5,047,769</b>	<b>5,451,301</b>	<b>5,918,044</b>	<b>6,156,219</b>	<b>6,656,774</b>	<b>7,257,235</b>	<b>8,160,534</b>	<b>8,882,934</b>	<b>9,558,196</b>	<b>10,944,980</b>	<b>10,881,350</b>	<b>11,992,547</b>	<b>13,234,654</b>	<b>14,122,133</b>
Mining and Quarrying	33,749	38,367	41,790	44,172	48,859	54,486	60,461	65,762	71,803	85,876	85,962	94,605	103,599	112,715
Manufacturing	174,843	195,814	204,470	211,393	237,197	253,028	276,589	291,852	310,328	352,843	376,836	420,005	425,423	447,333
Electricity, Gas and Water Supply	1,263,939	1,347,830	1,443,968	1,526,382	1,677,728	1,861,456	2,088,425	2,342,916	2,554,497	2,932,562	2,818,192	3,229,648	3,426,232	3,715,749
Construction	280,174	301,824	323,643	336,292	365,717	398,107	443,207	487,806	525,493	597,215	582,691	664,093	707,837	728,223
Wholesale and Retail Trade; Repair of Motor Vehicles, Motorcycles and Personal and Household Goods	14,917	15,757	16,590	16,688	17,968	19,303	20,900	22,348	23,527	26,938	26,292	28,361	30,452	32,084
Hotels and Restaurants	283,237	304,850	315,776	317,036	329,802	350,477	383,600	399,093	411,261	466,584	463,736	510,551	625,773	665,986
Transport, Storage and Communications	1,820,211	1,965,818	2,197,129	2,292,726	2,470,239	2,693,359	3,111,849	3,349,964	3,555,058	4,037,409	4,095,855	4,384,942	4,946,609	5,211,747
Financial Intermediation	44,130	46,840	48,892	50,787	54,203	61,952	68,472	74,432	79,859	91,119	92,213	102,376	108,058	115,351
Real Estate, Renting and Business Activities	284,863	311,145	341,949	366,202	406,237	449,996	497,140	551,040	607,276	714,157	704,873	768,765	843,318	913,904
Public Administration and Defence; Compulsory Social Security	350,829	380,634	403,896	399,958	428,148	454,644	490,514	516,119	539,903	624,128	624,752	672,427	728,413	774,667
Education	133,911	142,703	151,905	157,306	167,901	174,759	187,813	199,085	212,809	245,813	245,313	270,978	322,062	341,115
Health and Social Work	234,151	264,742	282,376	284,223	285,346	306,089	333,071	363,546	426,956	491,948	488,347	541,176	619,515	665,986
Other Community, Social and Personal Service Activities	128,815	134,977	145,660	153,054	167,429	179,579	198,493	218,971	239,426	278,388	276,288	304,620	347,363	397,273
Private Households with Employed Persons	-	-	-	-	-	-	-	-	-	-	-	-	-	-
<b>TOTAL</b>	<b>5,771,529</b>	<b>6,227,758</b>	<b>6,762,393</b>	<b>7,050,935</b>	<b>7,638,977</b>	<b>8,338,945</b>	<b>9,344,120</b>	<b>10,139,368</b>	<b>10,938,738</b>	<b>12,618,197</b>	<b>12,541,181</b>	<b>13,807,241</b>	<b>15,193,687</b>	<b>16,243,569</b>

**TABLE 5-1 GROWTH RATE OF GROSS CAPITAL STOCK OF PUBLIC SECTOR AT CURRENT REPLACEMENT COST**

(Unit - Percentage)

Sector	1999	2000	2001	2002	2003	2004	2005	2006	2007	2008	2009	2010	2011r	2012p
<b>Agriculture</b>	<b>6.9</b>	<b>7.3</b>	<b>8.7</b>	<b>6.0</b>	<b>9.8</b>	<b>10.1</b>	<b>9.4</b>	<b>6.2</b>	<b>9.9</b>	<b>21.2</b>	<b>-0.8</b>	<b>9.3</b>	<b>8.0</b>	<b>8.3</b>
Agriculture, Hunting and Forestry	6.9	7.3	8.7	6.0	9.8	10.1	9.4	6.2	9.9	21.2	-0.8	9.3	8.0	8.5
Fishing	6.9	7.3	8.7	6.0	9.8	10.1	9.4	6.2	9.9	21.2	-0.8	9.3	8.0	7.8
<b>Non-Agriculture</b>	<b>4.8</b>	<b>8.0</b>	<b>8.6</b>	<b>4.0</b>	<b>8.1</b>	<b>9.0</b>	<b>12.4</b>	<b>8.9</b>	<b>7.6</b>	<b>14.5</b>	<b>-0.6</b>	<b>10.2</b>	<b>10.4</b>	<b>6.7</b>
Mining and Quarrying	7.2	13.7	8.9	5.7	10.6	11.5	11.0	8.8	9.2	19.6	0.1	10.1	9.5	8.8
Manufacturing	-3.8	12.0	4.4	3.4	12.2	6.7	9.3	5.5	6.3	13.7	6.8	11.5	1.3	5.2
Electricity, Gas and Water Supply	7.2	6.6	7.1	5.7	9.9	11.0	12.2	12.2	9.0	14.8	-3.9	14.6	6.1	8.5
Construction	5.8	7.7	7.2	3.9	8.7	8.9	11.3	10.1	7.7	13.6	-2.4	14.0	6.6	2.9
Wholesale and Retail Trade; Repair of Motor Vehicles, Motorcycles and Personal and Household Goods	0.7	5.6	5.3	0.6	7.7	7.4	8.3	6.9	5.3	14.5	-2.4	7.9	7.4	5.4
Hotels and Restaurants	3.5	7.6	3.6	0.4	4.0	6.3	9.5	4.0	3.0	13.5	-0.6	10.1	22.6	6.4
Transport, Storage and Communications	3.7	8.0	11.8	4.4	7.7	9.0	15.5	7.7	6.1	13.6	1.4	7.1	12.8	5.4
Financial Intermediation	0.7	6.1	4.4	3.9	6.7	14.3	10.5	8.7	7.3	14.1	1.2	11.0	5.6	6.7
Real Estate, Renting and Business Activities	9.4	9.2	9.9	7.1	10.9	10.8	10.5	10.8	10.2	17.6	-1.3	9.1	9.7	8.4
Public Administration and Defence; Compulsory Social Security	0.3	8.5	6.1	-1.0	7.0	6.2	7.9	5.2	4.6	15.6	0.1	7.6	8.3	6.3
Education	6.4	6.6	6.4	3.6	6.7	4.1	7.5	6.0	6.9	15.5	-0.2	10.5	18.9	5.9
Health and Social Work	11.1	13.1	6.7	0.7	0.4	7.3	8.8	9.1	17.4	15.2	-0.7	10.8	14.5	7.5
Other Community, Social and Personal Service Activities	3.7	4.8	7.9	5.1	9.4	7.3	10.5	10.3	9.3	16.3	-0.8	10.3	14.0	14.4
Private Households with Employed Persons	-	-	-	-	-	-	-	-	-	-	-	-	-	-
<b>TOTAL</b>	<b>5.1</b>	<b>7.9</b>	<b>8.6</b>	<b>4.3</b>	<b>8.3</b>	<b>9.2</b>	<b>12.1</b>	<b>8.5</b>	<b>7.9</b>	<b>15.4</b>	<b>-0.6</b>	<b>10.1</b>	<b>10.0</b>	<b>6.9</b>

**TABLE 6 GROSS CAPITAL STOCK OF PUBLIC SECTOR AT 1988 PRICES**

(Unit - Millions of Baht)

Sector	1999	2000	2001	2002	2003	2004	2005	2006	2007	2008	2009	2010	2011r	2012p
<b>Agriculture</b>	<b>432,046</b>	<b>457,974</b>	<b>484,529</b>	<b>509,992</b>	<b>533,346</b>	<b>556,850</b>	<b>582,477</b>	<b>610,347</b>	<b>641,256</b>	<b>672,036</b>	<b>703,622</b>	<b>737,797</b>	<b>764,550</b>	<b>794,444</b>
Agriculture, Hunting and Forestry	302,432	320,582	339,170	356,994	373,342	389,795	407,734	427,243	448,879	470,425	492,535	516,458	535,185	554,943
Fishing	129,614	137,392	145,359	152,998	160,004	167,055	174,743	183,104	192,377	201,611	211,087	221,339	229,365	239,501
<b>Non-Agriculture</b>	<b>2,839,160</b>	<b>2,980,688</b>	<b>3,098,486</b>	<b>3,203,679</b>	<b>3,299,905</b>	<b>3,405,754</b>	<b>3,529,933</b>	<b>3,664,357</b>	<b>3,819,399</b>	<b>3,970,244</b>	<b>4,117,407</b>	<b>4,219,800</b>	<b>4,385,685</b>	<b>4,527,811</b>
Mining and Quarrying	20,212	22,401	23,610	24,928	26,153	27,648	29,127	30,737	32,605	34,431	36,359	38,451	40,127	41,945
Manufacturing	101,302	105,085	107,223	111,876	110,163	111,481	112,553	116,410	124,214	133,530	139,405	143,768	148,090	152,888
Electricity, Gas and Water Supply	743,423	777,260	809,193	846,354	878,578	917,193	957,575	1,002,324	1,048,787	1,092,836	1,135,456	1,149,579	1,213,455	1,254,106
Construction	166,670	172,885	178,537	185,456	189,097	194,583	201,269	208,928	218,309	228,209	237,251	250,300	259,754	266,871
Wholesale and Retail Trade; Repair of Motor Vehicles, Motorcycles and Personal and Household Goods	8,891	9,098	9,256	9,312	9,419	9,588	9,763	9,976	10,278	10,607	10,893	11,183	11,437	11,693
Hotels and Restaurants	147,478	151,549	155,132	158,386	161,385	165,465	171,921	179,215	188,355	197,893	198,662	213,134	226,610	234,179
Transport, Storage and Communications	944,486	1,003,438	1,053,923	1,080,643	1,112,056	1,138,499	1,183,131	1,225,022	1,266,485	1,298,765	1,351,425	1,356,176	1,383,772	1,426,531
Financial Intermediation	25,869	26,153	26,534	27,577	26,987	29,029	29,794	30,944	32,617	34,444	35,856	37,052	38,225	39,467
Real Estate, Renting and Business Activities	169,360	183,245	196,037	208,621	220,339	232,174	244,879	258,247	272,733	286,370	301,548	317,851	330,804	345,326
Public Administration and Defence; Compulsory Social Security	211,831	219,922	223,784	223,773	225,074	227,920	232,654	238,082	247,032	257,407	267,189	278,467	287,103	295,716
Education	75,701	77,785	78,631	81,033	83,860	85,585	86,909	88,443	93,422	100,123	102,696	108,139	116,332	122,412
Health and Social Work	148,661	154,322	157,169	162,688	168,994	174,582	174,317	175,992	178,393	180,923	184,102	193,307	202,348	207,568
Other Community, Social and Personal Service Activities	75,276	77,545	79,457	83,032	87,800	92,007	96,041	100,037	106,169	114,706	116,565	122,393	127,628	129,109
Private Households with Employed Persons	-	-	-	-	-	-	-	-	-	-	-	-	-	-
<b>TOTAL</b>	<b>3,271,206</b>	<b>3,438,662</b>	<b>3,583,015</b>	<b>3,713,671</b>	<b>3,833,251</b>	<b>3,962,604</b>	<b>4,112,410</b>	<b>4,274,704</b>	<b>4,460,655</b>	<b>4,642,280</b>	<b>4,821,029</b>	<b>4,957,597</b>	<b>5,150,235</b>	<b>5,322,255</b>

**TABLE 6-1 GROWTH RATE OF GROSS CAPITAL STOCK OF PUBLIC SECTOR AT 1988 PRICES**

(Unit - Percentage)

Sector	1999	2000	2001	2002	2003	2004	2005	2006	2007	2008	2009	2010	2011r	2012p
<b>Agriculture</b>	<b>7.8</b>	<b>6.0</b>	<b>5.8</b>	<b>5.3</b>	<b>4.6</b>	<b>4.4</b>	<b>4.6</b>	<b>4.8</b>	<b>5.1</b>	<b>4.8</b>	<b>4.7</b>	<b>4.9</b>	<b>3.6</b>	<b>3.9</b>
Agriculture, Hunting and Forestry	7.8	6.0	5.8	5.3	4.6	4.4	4.6	4.8	5.1	4.8	4.7	4.9	3.6	3.7
Fishing	7.8	6.0	5.8	5.3	4.6	4.4	4.6	4.8	5.1	4.8	4.7	4.9	3.6	4.4
<b>Non-Agriculture</b>	<b>6.3</b>	<b>5.0</b>	<b>4.0</b>	<b>3.4</b>	<b>3.0</b>	<b>3.2</b>	<b>3.6</b>	<b>3.8</b>	<b>4.2</b>	<b>3.9</b>	<b>3.7</b>	<b>2.5</b>	<b>3.9</b>	<b>3.2</b>
Mining and Quarrying	9.2	10.8	5.4	5.6	4.9	5.7	5.3	5.5	6.1	5.6	5.6	5.8	4.4	4.5
Manufacturing	3.7	3.7	2.0	4.3	-1.5	1.2	1.0	3.4	6.7	7.5	4.4	3.1	3.0	3.2
Electricity, Gas and Water Supply	8.3	4.6	4.1	4.6	3.8	4.4	4.4	4.7	4.6	4.2	3.9	1.2	5.6	3.4
Construction	8.3	3.7	3.3	3.9	2.0	2.9	3.4	3.8	4.5	4.5	4.0	5.5	3.8	2.7
Wholesale and Retail Trade; Repair of Motor Vehicles, Motorcycles and Personal and Household Goods	2.9	2.3	1.7	0.6	1.1	1.8	1.8	2.2	3.0	3.2	2.7	2.7	2.3	2.2
Hotels and Restaurants	4.4	2.8	2.4	2.1	1.9	2.5	3.9	4.2	5.1	5.1	0.4	7.3	6.3	3.3
Transport, Storage and Communications	3.8	6.2	5.0	2.5	2.9	2.4	3.9	3.5	3.4	2.5	4.1	0.4	2.0	3.1
Financial Intermediation	4.8	1.1	1.5	3.9	-2.1	7.6	2.6	3.9	5.4	5.6	4.1	3.3	3.2	3.2
Real Estate, Renting and Business Activities	9.8	8.2	7.0	6.4	5.6	5.4	5.5	5.5	5.6	5.0	5.3	5.4	4.1	4.4
Public Administration and Defence; Compulsory Social Security	3.5	3.8	1.8	-0.0	0.6	1.3	2.1	2.3	3.8	4.2	3.8	4.2	3.1	3.0
Education	10.4	2.8	1.1	3.1	3.5	2.1	1.5	1.8	5.6	7.2	2.6	5.3	7.6	5.2
Health and Social Work	11.1	3.8	1.8	3.5	3.9	3.3	-0.2	1.0	1.4	1.4	1.8	5.0	4.7	2.6
Other Community, Social and Personal Service Activities	9.8	3.0	2.5	4.5	5.7	4.8	4.4	4.2	6.1	8.0	1.6	5.0	4.3	1.2
Private Households with Employed Persons	-	-	-	-	-	-	-	-	-	-	-	-	-	-
<b>TOTAL</b>	<b>6.5</b>	<b>5.1</b>	<b>4.2</b>	<b>3.6</b>	<b>3.2</b>	<b>3.4</b>	<b>3.8</b>	<b>3.9</b>	<b>4.4</b>	<b>4.1</b>	<b>3.9</b>	<b>2.8</b>	<b>3.9</b>	<b>3.3</b>

**TABLE 7 NET CAPITAL STOCK OF THAILAND AT CURRENT REPLACEMENT COST**

(Unit - Millions of Baht)

Sector	1999	2000	2001	2002	2003	2004	2005	2006	2007	2008	2009	2010	2011r	2012p
<b>Agriculture</b>	<b>973,303</b>	<b>1,046,766</b>	<b>1,138,392</b>	<b>1,184,182</b>	<b>1,260,396</b>	<b>1,360,838</b>	<b>1,513,102</b>	<b>1,625,230</b>	<b>1,734,202</b>	<b>1,995,776</b>	<b>2,007,703</b>	<b>2,201,084</b>	<b>2,355,195</b>	<b>2,537,545</b>
Agriculture, Hunting and Forestry	778,642	837,413	910,714	947,346	1,008,317	1,088,670	1,210,482	1,300,184	1,387,362	1,596,621	1,606,162	1,760,867	1,884,163	2,034,115
Fishing	194,661	209,353	227,678	236,836	252,079	272,168	302,620	325,046	346,840	399,155	401,541	440,217	471,032	503,430
<b>Non-Agriculture</b>	<b>14,798,214</b>	<b>15,615,173</b>	<b>16,705,058</b>	<b>16,953,162</b>	<b>17,775,978</b>	<b>19,104,468</b>	<b>21,142,559</b>	<b>22,959,591</b>	<b>24,035,413</b>	<b>26,571,570</b>	<b>26,390,192</b>	<b>28,555,140</b>	<b>30,986,957</b>	<b>33,021,764</b>
Mining and Quarrying	204,626	229,649	253,218	254,588	263,293	284,856	326,920	359,314	372,805	408,525	423,047	469,697	505,031	546,425
Manufacturing	2,753,492	2,972,478	3,276,783	3,315,071	3,450,815	3,724,231	4,225,029	4,641,310	4,809,903	5,244,776	5,399,005	5,949,343	6,408,777	6,907,201
Electricity, Gas and Water Supply	1,190,686	1,253,577	1,329,499	1,392,353	1,513,229	1,663,759	1,849,662	2,058,450	2,220,362	2,513,672	2,387,988	2,669,334	2,826,033	3,030,047
Construction	527,585	595,383	659,819	653,996	670,039	723,895	836,704	919,088	946,314	1,021,807	1,066,477	1,186,733	1,275,157	1,360,195
Wholesale and Retail Trade; Repair of Motor Vehicles, Motorcycles and Personal and Household Goods	1,246,815	1,316,761	1,392,918	1,387,645	1,426,531	1,521,263	1,665,598	1,788,350	1,836,116	2,007,443	1,980,989	2,142,772	2,298,988	2,476,830
Hotels and Restaurants	692,710	713,628	729,234	720,389	739,271	786,812	872,269	928,916	942,775	1,031,227	1,025,610	1,110,241	1,203,587	1,277,555
Transport, Storage and Communications	2,783,203	2,996,994	3,338,171	3,462,394	3,699,609	4,013,031	4,569,087	4,947,224	5,155,777	5,771,386	5,790,250	6,210,205	6,831,429	7,259,503
Financial Intermediation	204,397	217,003	231,321	235,007	243,526	261,830	292,091	317,673	329,509	360,610	363,617	398,209	425,950	456,219
Real Estate, Renting and Business Activities	3,639,816	3,663,885	3,754,046	3,801,624	4,008,691	4,276,603	4,531,814	4,881,036	5,151,607	5,696,391	5,452,445	5,718,643	6,274,247	6,604,622
Public Administration and Defence; Compulsory Social Security	271,136	289,641	307,412	306,125	326,702	350,235	383,126	406,738	427,052	487,266	484,830	517,674	555,397	585,833
Education	358,923	375,930	394,893	397,483	408,096	415,521	437,368	458,913	477,596	530,846	528,697	572,920	625,625	675,627
Health and Social Work	556,374	607,337	628,102	606,805	582,739	613,979	644,841	698,768	780,996	846,215	840,095	908,851	997,253	1,063,780
Other Community, Social and Personal Service Activities	368,451	382,907	409,642	419,682	443,437	468,453	508,050	553,811	584,601	651,406	647,142	700,518	759,483	777,927
Private Households with Employed Persons	-	-	-	-	-	-	-	-	-	-	-	-	-	-
<b>TOTAL</b>	<b>15,771,517</b>	<b>16,661,939</b>	<b>17,843,450</b>	<b>18,137,344</b>	<b>19,036,374</b>	<b>20,465,306</b>	<b>22,655,661</b>	<b>24,584,821</b>	<b>25,769,615</b>	<b>28,567,346</b>	<b>28,397,895</b>	<b>30,756,224</b>	<b>33,342,152</b>	<b>35,559,309</b>

**TABLE 7-1 GROWTH RATE OF NET CAPITAL STOCK OF THAILAND AT CURRENT REPLACEMENT COST**

(Unit - Percentage)

Sector	1999	2000	2001	2002	2003	2004	2005	2006	2007	2008	2009	2010	2011r	2012p
<b>Agriculture</b>	<b>-3.8</b>	<b>7.5</b>	<b>8.8</b>	<b>4.0</b>	<b>6.4</b>	<b>8.0</b>	<b>11.2</b>	<b>7.4</b>	<b>6.7</b>	<b>15.1</b>	<b>0.6</b>	<b>9.6</b>	<b>7.0</b>	<b>7.7</b>
Agriculture, Hunting and Forestry	-3.8	7.5	8.8	4.0	6.4	8.0	11.2	7.4	6.7	15.1	0.6	9.6	7.0	8.0
Fishing	-3.8	7.5	8.8	4.0	6.4	8.0	11.2	7.4	6.7	15.1	0.6	9.6	7.0	6.9
<b>Non-Agriculture</b>	<b>-2.1</b>	<b>5.5</b>	<b>7.0</b>	<b>1.5</b>	<b>4.9</b>	<b>7.5</b>	<b>10.7</b>	<b>8.6</b>	<b>4.7</b>	<b>10.6</b>	<b>-0.7</b>	<b>8.2</b>	<b>8.5</b>	<b>6.6</b>
Mining and Quarrying	-7.1	12.2	10.3	0.5	3.4	8.2	14.8	9.9	3.8	9.6	3.6	11.0	7.5	8.2
Manufacturing	-5.7	8.0	10.2	1.2	4.1	7.9	13.4	9.9	3.6	9.0	2.9	10.2	7.7	7.8
Electricity, Gas and Water Supply	6.5	5.3	6.1	4.7	8.7	9.9	11.2	11.3	7.9	13.2	-5.0	11.8	5.9	7.2
Construction	-6.6	12.9	10.8	-0.9	2.5	8.0	15.6	9.8	3.0	8.0	4.4	11.3	7.5	6.7
Wholesale and Retail Trade; Repair of Motor Vehicles, Motorcycles and Personal and Household Goods	-6.0	5.6	5.8	-0.4	2.8	6.6	9.5	7.4	2.7	9.3	-1.3	8.2	7.3	7.7
Hotels and Restaurants	-5.7	3.0	2.2	-1.2	2.6	6.4	10.9	6.5	1.5	9.4	-0.5	8.3	8.4	6.1
Transport, Storage and Communications	-1.1	7.7	11.4	3.7	6.9	8.5	13.9	8.3	4.2	11.9	0.3	7.3	10.0	6.3
Financial Intermediation	-8.6	6.2	6.6	1.6	3.6	7.5	11.6	8.8	3.7	9.4	0.8	9.5	7.0	7.1
Real Estate, Renting and Business Activities	-0.0	0.7	2.5	1.3	5.4	6.7	6.0	7.7	5.5	10.6	-4.3	4.9	9.7	5.3
Public Administration and Defence; Compulsory Social Security	-0.1	6.8	6.1	-0.4	6.7	7.2	9.4	6.2	5.0	14.1	-0.5	6.8	7.3	5.5
Education	0.0	4.7	5.0	0.7	2.7	1.8	5.3	4.9	4.1	11.1	-0.4	8.4	9.2	8.0
Health and Social Work	1.8	9.2	3.4	-3.4	-4.0	5.4	5.0	8.4	11.8	8.4	-0.7	8.2	9.7	6.7
Other Community, Social and Personal Service Activities	-1.9	3.9	7.0	2.5	5.7	5.6	8.5	9.0	5.6	11.4	-0.7	8.2	8.4	2.4
Private Households with Employed Persons	-	-	-	-	-	-	-	-	-	-	-	-	-	-
<b>TOTAL</b>	<b>-2.2</b>	<b>5.6</b>	<b>7.1</b>	<b>1.6</b>	<b>5.0</b>	<b>7.5</b>	<b>10.7</b>	<b>8.5</b>	<b>4.8</b>	<b>10.9</b>	<b>-0.6</b>	<b>8.3</b>	<b>8.4</b>	<b>6.6</b>

**TABLE 8 NET CAPITAL STOCK OF THAILAND AT 1988 PRICES**

(Unit - Millions of Baht)

Sector	1999	2000	2001	2002	2003	2004	2005	2006	2007	2008	2009	2010	2011r	2012p
<b>Agriculture</b>	<b>633,473</b>	<b>655,315</b>	<b>671,987</b>	<b>693,618</b>	<b>716,201</b>	<b>742,654</b>	<b>772,718</b>	<b>808,579</b>	<b>846,500</b>	<b>882,441</b>	<b>911,285</b>	<b>961,201</b>	<b>984,563</b>	<b>1,027,417</b>
Agriculture, Hunting and Forestry	506,778	524,252	537,590	554,894	572,961	594,123	618,174	646,863	677,200	705,953	729,028	768,961	787,670	823,373
Fishing	126,695	131,063	134,397	138,724	143,240	148,531	154,544	161,716	169,300	176,488	182,257	192,240	196,893	204,044
<b>Non-Agriculture</b>	<b>8,468,696</b>	<b>8,558,646</b>	<b>8,633,361</b>	<b>8,741,642</b>	<b>8,904,267</b>	<b>9,140,776</b>	<b>9,401,989</b>	<b>9,717,482</b>	<b>10,037,793</b>	<b>10,326,057</b>	<b>10,531,571</b>	<b>10,878,100</b>	<b>11,113,038</b>	<b>11,499,985</b>
Mining and Quarrying	108,951	112,757	113,468	115,141	118,394	123,898	129,681	136,703	143,742	149,456	153,988	164,506	168,514	177,956
Manufacturing	1,472,378	1,471,707	1,489,929	1,520,165	1,562,542	1,625,527	1,688,784	1,776,629	1,860,451	1,942,476	1,992,410	2,110,547	2,159,513	2,271,838
Electricity, Gas and Water Supply	700,106	723,026	744,213	770,305	791,470	818,199	846,080	877,958	909,669	937,869	963,191	954,184	1,002,254	1,026,819
Construction	307,547	317,055	317,890	317,959	324,109	340,210	356,602	375,930	395,116	414,536	426,622	456,848	467,882	491,344
Wholesale and Retail Trade; Repair of Motor Vehicles, Motorcycles and Personal and Household Goods	759,722	763,313	755,634	750,920	754,826	769,409	785,736	807,419	829,069	848,967	859,184	891,973	902,227	933,084
Hotels and Restaurants	378,720	372,002	369,308	370,968	376,669	388,050	405,002	423,188	442,333	459,915	469,532	496,630	518,337	536,150
Transport, Storage and Communications	1,534,125	1,583,130	1,623,729	1,658,591	1,711,059	1,755,546	1,823,148	1,884,694	1,959,667	2,023,750	2,060,708	2,118,464	2,141,617	2,226,406
Financial Intermediation	129,322	129,345	128,343	130,141	131,606	135,894	139,961	145,648	151,705	157,346	160,534	168,326	171,285	178,607
Real Estate, Renting and Business Activities	2,137,064	2,131,384	2,132,457	2,145,875	2,169,262	2,207,309	2,253,110	2,300,764	2,344,594	2,384,949	2,415,919	2,453,777	2,490,541	2,536,229
Public Administration and Defence; Compulsory Social Security	164,035	168,136	170,016	170,647	172,877	176,792	182,186	187,756	195,507	202,545	208,419	215,337	219,825	224,793
Education	206,662	210,140	210,470	210,839	209,479	207,720	205,764	206,321	212,384	217,893	223,449	231,356	236,377	247,544
Health and Social Work	351,474	353,972	351,100	349,161	346,342	350,752	338,568	339,772	331,977	316,985	323,013	332,422	344,729	354,522
Other Community, Social and Personal Service Activities	218,590	222,679	226,804	230,930	235,632	241,470	247,367	254,700	261,579	269,370	274,602	283,730	289,937	294,693
Private Households with Employed Persons	-	-	-	-	-	-	-	-	-	-	-	-	-	-
<b>TOTAL</b>	<b>9,102,169</b>	<b>9,213,961</b>	<b>9,305,348</b>	<b>9,435,260</b>	<b>9,620,468</b>	<b>9,883,430</b>	<b>10,174,707</b>	<b>10,526,061</b>	<b>10,884,293</b>	<b>11,208,498</b>	<b>11,442,856</b>	<b>11,839,301</b>	<b>12,097,601</b>	<b>12,527,402</b>

**TABLE 8-1 GROWTH RATE OF NET CAPITAL STOCK OF THAILAND AT 1988 PRICES**

(Unit - Percentage)

Sector	1999	2000	2001	2002	2003	2004	2005	2006	2007	2008	2009	2010	2011r	2012p
<b>Agriculture</b>	<b>1.5</b>	<b>3.4</b>	<b>2.5</b>	<b>3.2</b>	<b>3.3</b>	<b>3.7</b>	<b>4.0</b>	<b>4.6</b>	<b>4.7</b>	<b>4.2</b>	<b>3.3</b>	<b>5.5</b>	<b>2.4</b>	<b>4.4</b>
Agriculture, Hunting and Forestry	1.5	3.4	2.5	3.2	3.3	3.7	4.0	4.6	4.7	4.2	3.3	5.5	2.4	4.5
Fishing	1.5	3.4	2.5	3.2	3.3	3.7	4.0	4.6	4.7	4.2	3.3	5.5	2.4	3.6
<b>Non-Agriculture</b>	<b>0.9</b>	<b>1.1</b>	<b>0.9</b>	<b>1.3</b>	<b>1.9</b>	<b>2.7</b>	<b>2.9</b>	<b>3.4</b>	<b>3.3</b>	<b>2.9</b>	<b>2.0</b>	<b>3.3</b>	<b>2.2</b>	<b>3.5</b>
Mining and Quarrying	-0.4	3.5	0.6	1.5	2.8	4.6	4.7	5.4	5.1	4.0	3.0	6.8	2.4	5.6
Manufacturing	0.3	-0.0	1.2	2.0	2.8	4.0	3.9	5.2	4.7	4.4	2.6	5.9	2.3	5.2
Electricity, Gas and Water Supply	7.2	3.3	2.9	3.5	2.7	3.4	3.4	3.8	3.6	3.1	2.7	-0.9	5.0	2.5
Construction	1.3	3.1	0.3	0.0	1.9	5.0	4.8	5.4	5.1	4.9	2.9	7.1	2.4	5.0
Wholesale and Retail Trade; Repair of Motor Vehicles, Motorcycles and Personal and Household Goods	-1.6	0.5	-1.0	-0.6	0.5	1.9	2.1	2.8	2.7	2.4	1.2	3.8	1.1	3.4
Hotels and Restaurants	-2.2	-1.8	-0.7	0.4	1.5	3.0	4.4	4.5	4.5	4.0	2.1	5.8	4.4	3.4
Transport, Storage and Communications	1.9	3.2	2.6	2.1	3.2	2.6	3.9	3.4	4.0	3.3	1.8	2.8	1.1	4.0
Financial Intermediation	-2.8	0.0	-0.8	1.4	1.1	3.3	3.0	4.1	4.2	3.7	2.0	4.9	1.8	4.3
Real Estate, Renting and Business Activities	-0.5	-0.3	0.1	0.6	1.1	1.8	2.1	2.1	1.9	1.7	1.3	1.6	1.5	1.8
Public Administration and Defence; Compulsory Social Security	2.5	2.5	1.1	0.4	1.3	2.3	3.1	3.1	4.1	3.6	2.9	3.3	2.1	2.3
Education	3.8	1.7	0.2	0.2	-0.6	-0.8	-0.9	0.3	2.9	2.6	2.5	3.5	2.2	4.7
Health and Social Work	1.9	0.7	-0.8	-0.6	-0.8	1.3	-3.5	0.4	-2.3	-4.5	1.9	2.9	3.7	2.8
Other Community, Social and Personal Service Activities	2.9	1.9	1.9	1.8	2.0	2.5	2.4	3.0	2.7	3.0	1.9	3.3	2.2	1.6
Private Households with Employed Persons	-	-	-	-	-	-	-	-	-	-	-	-	-	-
<b>TOTAL</b>	<b>0.9</b>	<b>1.2</b>	<b>1.0</b>	<b>1.4</b>	<b>2.0</b>	<b>2.7</b>	<b>2.9</b>	<b>3.5</b>	<b>3.4</b>	<b>3.0</b>	<b>2.1</b>	<b>3.5</b>	<b>2.2</b>	<b>3.6</b>

**TABLE 9 NET CAPITAL STOCK OF PRIVATE SECTOR AT CURRENT REPLACEMENT COST**

(Unit - Millions of Baht)

Sector	1999	2000	2001	2002	2003	2004	2005	2006	2007	2008	2009	2010	2011r	2012p
<b>Agriculture</b>	<b>403,574</b>	<b>440,529</b>	<b>483,305</b>	<b>495,296</b>	<b>511,400</b>	<b>543,241</b>	<b>625,136</b>	<b>690,059</b>	<b>713,116</b>	<b>769,453</b>	<b>801,001</b>	<b>892,148</b>	<b>958,714</b>	<b>1,041,355</b>
Agriculture, Hunting and Forestry	379,832	413,047	452,153	465,126	484,020	516,352	588,906	645,564	672,602	738,195	761,471	844,612	906,626	983,428
Fishing	23,742	27,482	31,152	30,170	27,380	26,889	36,230	44,495	40,514	31,258	39,530	47,536	52,088	57,927
<b>Non-Agriculture</b>	<b>10,896,649</b>	<b>11,432,062</b>	<b>12,185,249</b>	<b>12,264,543</b>	<b>12,743,589</b>	<b>13,655,867</b>	<b>15,031,507</b>	<b>16,333,852</b>	<b>16,950,774</b>	<b>18,553,038</b>	<b>18,497,663</b>	<b>19,988,208</b>	<b>21,606,871</b>	<b>23,094,796</b>
Mining and Quarrying	176,820	198,434	219,269	218,751	223,910	241,077	278,378	306,675	315,571	340,817	355,813	396,421	425,710	461,044
Manufacturing	2,629,799	2,835,905	3,134,067	3,166,345	3,283,656	3,545,554	4,029,592	4,432,971	4,586,801	4,990,440	5,130,172	5,655,126	6,110,718	6,594,687
Electricity, Gas and Water Supply	178,603	188,036	199,425	208,853	226,984	249,564	277,449	308,767	333,054	377,051	358,198	400,400	423,921	458,587
Construction	309,727	364,198	412,842	397,205	391,955	419,733	496,024	542,958	542,426	568,468	627,032	697,139	743,979	806,547
Wholesale and Retail Trade; Repair of Motor Vehicles, Motorcycles and Personal and Household Goods	1,235,688	1,305,201	1,380,843	1,375,562	1,413,648	1,507,462	1,650,649	1,772,387	1,819,390	1,988,593	1,962,742	2,123,333	2,278,337	2,455,136
Hotels and Restaurants	496,324	508,501	517,744	506,802	514,753	545,901	602,799	643,234	646,229	697,505	697,145	753,741	773,290	820,629
Transport, Storage and Communications	1,373,150	1,465,956	1,631,279	1,683,602	1,799,751	1,967,217	2,210,057	2,421,370	2,484,414	2,766,520	2,774,262	3,006,432	3,238,315	3,489,609
Financial Intermediation	170,917	182,050	195,024	197,295	203,383	216,181	241,727	262,791	270,720	294,002	296,942	325,439	349,522	375,282
Real Estate, Renting and Business Activities	3,405,822	3,410,303	3,477,608	3,508,348	3,686,868	3,923,878	4,145,852	4,457,566	4,688,745	5,157,620	4,925,527	5,149,137	5,657,124	5,943,374
Public Administration and Defence; Compulsory Social Security	-	-	-	-	-	-	-	-	-	-	-	-	-	-
Education	257,167	267,872	280,367	279,634	284,157	288,294	302,252	317,777	327,370	359,056	358,613	388,404	424,172	458,587
Health and Social Work	398,639	432,763	445,942	426,895	405,760	425,987	445,630	483,866	535,337	572,366	571,160	616,512	673,032	721,085
Other Community, Social and Personal Service Activities	263,993	272,843	290,839	295,251	308,764	325,019	351,098	383,490	400,717	440,600	440,057	476,124	508,751	510,229
Private Households with Employed Persons	-	-	-	-	-	-	-	-	-	-	-	-	-	-
<b>TOTAL</b>	<b>11,300,223</b>	<b>11,872,591</b>	<b>12,668,554</b>	<b>12,759,839</b>	<b>13,254,989</b>	<b>14,199,108</b>	<b>15,656,643</b>	<b>17,023,911</b>	<b>17,663,890</b>	<b>19,322,491</b>	<b>19,298,664</b>	<b>20,880,356</b>	<b>22,565,585</b>	<b>24,136,151</b>

**TABLE 9-1 GROWTH RATE OF NET CAPITAL STOCK OF PRIVATE SECTOR AT CURRENT REPLACEMENT COST**

(Unit - Percentage)

Sector	1999	2000	2001	2002	2003	2004	2005	2006	2007	2008	2009	2010	2011r	2012p
<b>Agriculture</b>	<b>-15.0</b>	<b>9.2</b>	<b>9.7</b>	<b>2.5</b>	<b>3.3</b>	<b>6.2</b>	<b>15.1</b>	<b>10.4</b>	<b>3.3</b>	<b>7.9</b>	<b>4.1</b>	<b>11.4</b>	<b>7.5</b>	<b>8.6</b>
Agriculture, Hunting and Forestry	-12.3	8.7	9.5	2.9	4.1	6.7	14.1	9.6	4.2	9.8	3.2	10.9	7.3	8.5
Fishing	-42.4	15.8	13.4	-3.2	-9.2	-1.8	34.7	22.8	-8.9	-22.8	26.5	20.3	9.6	11.2
<b>Non-Agriculture</b>	<b>-4.3</b>	<b>4.9</b>	<b>6.6</b>	<b>0.7</b>	<b>3.9</b>	<b>7.2</b>	<b>10.1</b>	<b>8.7</b>	<b>3.8</b>	<b>9.5</b>	<b>-0.3</b>	<b>8.1</b>	<b>8.1</b>	<b>6.9</b>
Mining and Quarrying	-8.9	12.2	10.5	-0.2	2.4	7.7	15.5	10.2	2.9	8.0	4.4	11.4	7.4	8.3
Manufacturing	-5.8	7.8	10.5	1.0	3.7	8.0	13.7	10.0	3.5	8.8	2.8	10.2	8.1	7.9
Electricity, Gas and Water Supply	6.5	5.3	6.1	4.7	8.7	9.9	11.2	11.3	7.9	13.2	-5.0	11.8	5.9	8.2
Construction	-13.4	17.6	13.4	-3.8	-1.3	7.1	18.2	9.5	-0.1	4.8	10.3	11.2	6.7	8.4
Wholesale and Retail Trade; Repair of Motor Vehicles, Motorcycles and Personal and Household Goods	-6.0	5.6	5.8	-0.4	2.8	6.6	9.5	7.4	2.7	9.3	-1.3	8.2	7.3	7.8
Hotels and Restaurants	-8.1	2.5	1.8	-2.1	1.6	6.1	10.4	6.7	0.5	7.9	-0.1	8.1	2.6	6.1
Transport, Storage and Communications	-6.2	6.8	11.3	3.2	6.9	9.3	12.3	9.6	2.6	11.4	0.3	8.4	7.7	7.8
Financial Intermediation	-10.1	6.5	7.1	1.2	3.1	6.3	11.8	8.7	3.0	8.6	1.0	9.6	7.4	7.4
Real Estate, Renting and Business Activities	-0.6	0.1	2.0	0.9	5.1	6.4	5.7	7.5	5.2	10.0	-4.5	4.5	9.9	5.1
Public Administration and Defence; Compulsory Social Security	-	-	-	-	-	-	-	-	-	-	-	-	-	-
Education	-2.6	4.2	4.7	-0.3	1.6	1.5	4.8	5.1	3.0	9.7	-0.1	8.3	9.2	8.1
Health and Social Work	-0.8	8.6	3.0	-4.3	-5.0	5.0	4.6	8.6	10.6	6.9	-0.2	7.9	9.2	7.1
Other Community, Social and Personal Service Activities	-4.5	3.4	6.6	1.5	4.6	5.3	8.0	9.2	4.5	10.0	-0.1	8.2	6.9	0.3
Private Households with Employed Persons	-	-	-	-	-	-	-	-	-	-	-	-	-	-
<b>TOTAL</b>	<b>-4.7</b>	<b>5.1</b>	<b>6.7</b>	<b>0.7</b>	<b>3.9</b>	<b>7.1</b>	<b>10.3</b>	<b>8.7</b>	<b>3.8</b>	<b>9.4</b>	<b>-0.1</b>	<b>8.2</b>	<b>8.1</b>	<b>7.0</b>

**TABLE 10 NET CAPITAL STOCK OF PRIVATE SECTOR AT 1988 PRICES**

(Unit - Millions of Baht)

Sector	1999	2000	2001	2002	2003	2004	2005	2006	2007	2008	2009	2010	2011r	2012p
<b>Agriculture</b>	<b>293,435</b>	<b>297,728</b>	<b>296,239</b>	<b>301,254</b>	<b>309,560</b>	<b>321,967</b>	<b>336,382</b>	<b>354,923</b>	<b>373,224</b>	<b>390,708</b>	<b>400,866</b>	<b>430,014</b>	<b>440,382</b>	<b>467,510</b>
Agriculture, Hunting and Forestry	268,751	273,941	274,566	280,239	288,312	299,642	312,739	329,304	345,907	361,740	371,735	397,130	406,743	432,418
Fishing	24,684	23,787	21,673	21,015	21,248	22,325	23,643	25,619	27,317	28,968	29,131	32,884	33,639	35,092
<b>Non-Agriculture</b>	<b>6,269,486</b>	<b>6,267,069</b>	<b>6,269,160</b>	<b>6,309,143</b>	<b>6,410,282</b>	<b>6,582,504</b>	<b>6,762,655</b>	<b>6,992,363</b>	<b>7,212,869</b>	<b>7,414,318</b>	<b>7,540,549</b>	<b>7,854,601</b>	<b>7,993,227</b>	<b>8,305,400</b>
Mining and Quarrying	92,297	94,494	94,293	94,950	97,264	101,634	106,284	112,097	117,754	123,346	126,677	135,880	138,983	147,392
Manufacturing	1,400,117	1,397,803	1,414,845	1,441,141	1,484,298	1,545,993	1,608,280	1,692,574	1,770,085	1,844,429	1,890,539	2,006,631	2,053,364	2,163,014
Electricity, Gas and Water Supply	105,016	108,454	111,632	115,546	118,720	122,730	126,912	131,694	136,450	140,680	144,478	143,128	150,385	157,912
Construction	177,863	184,302	181,966	176,941	179,880	191,079	201,702	214,673	226,739	239,598	246,447	276,263	278,718	295,692
Wholesale and Retail Trade; Repair of Motor Vehicles, Motorcycles and Personal and Household Goods	753,081	756,625	748,912	744,200	748,063	762,546	778,765	800,317	821,781	841,504	851,602	884,282	894,456	925,225
Hotels and Restaurants	273,068	265,045	260,566	259,902	263,101	271,088	282,576	295,389	308,296	320,261	325,858	337,231	347,667	359,689
Transport, Storage and Communications	800,377	807,954	818,046	833,767	859,779	888,716	924,539	961,378	1,005,344	1,043,370	1,059,965	1,119,905	1,132,970	1,190,525
Financial Intermediation	109,622	109,710	108,601	109,640	111,507	114,366	117,903	122,718	127,565	131,902	134,276	141,516	143,923	150,630
Real Estate, Renting and Business Activities	1,998,004	1,982,107	1,974,061	1,978,926	1,994,844	2,025,520	2,063,315	2,102,562	2,137,134	2,169,191	2,190,883	2,218,518	2,248,621	2,286,398
Public Administration and Defence; Compulsory Social Security	-	-	-	-	-	-	-	-	-	-	-	-	-	-
Education	149,009	149,721	148,497	147,715	146,320	145,111	143,564	144,014	148,027	151,730	154,381	161,053	165,149	175,458
Health and Social Work	253,423	252,199	247,719	244,624	241,918	245,032	236,224	237,164	231,380	220,732	224,590	231,893	237,109	245,642
Other Community, Social and Personal Service Activities	157,609	158,655	160,022	161,791	164,588	168,689	172,591	177,783	182,314	187,575	190,853	198,301	201,882	207,823
Private Households with Employed Persons	-	-	-	-	-	-	-	-	-	-	-	-	-	-
<b>TOTAL</b>	<b>6,562,921</b>	<b>6,564,797</b>	<b>6,565,399</b>	<b>6,610,397</b>	<b>6,719,842</b>	<b>6,904,471</b>	<b>7,099,037</b>	<b>7,347,286</b>	<b>7,586,093</b>	<b>7,805,026</b>	<b>7,941,415</b>	<b>8,284,615</b>	<b>8,433,609</b>	<b>8,772,910</b>

**TABLE 10-1 GROWTH RATE OF NET CAPITAL STOCK OF PRIVATE SECTOR AT 1988 PRICES**

(Unit - Percentage)

Sector	1999	2000	2001	2002	2003	2004	2005	2006	2007	2008	2009	2010	2011r	2012p
<b>Agriculture</b>	<b>-4.2</b>	<b>1.5</b>	<b>-0.5</b>	<b>1.7</b>	<b>2.8</b>	<b>4.0</b>	<b>4.5</b>	<b>5.5</b>	<b>5.2</b>	<b>4.7</b>	<b>2.6</b>	<b>7.3</b>	<b>2.4</b>	<b>6.2</b>
Agriculture, Hunting and Forestry	-2.9	1.9	0.2	2.1	2.9	3.9	4.4	5.3	5.0	4.6	2.8	6.8	2.4	6.3
Fishing	-16.3	-3.6	-8.9	-3.0	1.1	5.1	5.9	8.4	6.6	6.0	0.6	12.9	2.3	4.3
<b>Non-Agriculture</b>	<b>-0.7</b>	<b>-0.0</b>	<b>0.0</b>	<b>0.6</b>	<b>1.6</b>	<b>2.7</b>	<b>2.7</b>	<b>3.4</b>	<b>3.2</b>	<b>2.8</b>	<b>1.7</b>	<b>4.2</b>	<b>1.8</b>	<b>3.9</b>
Mining and Quarrying	-1.8	2.4	-0.2	0.7	2.4	4.5	4.6	5.5	5.0	4.7	2.7	7.3	2.3	6.1
Manufacturing	0.2	-0.2	1.2	1.9	3.0	4.2	4.0	5.2	4.6	4.2	2.5	6.1	2.3	5.3
Electricity, Gas and Water Supply	7.2	3.3	2.9	3.5	2.7	3.4	3.4	3.8	3.6	3.1	2.7	-0.9	5.1	5.0
Construction	-2.5	3.6	-1.3	-2.8	1.7	6.2	5.6	6.4	5.6	5.7	2.9	12.1	0.9	6.1
Wholesale and Retail Trade; Repair of Motor Vehicles, Motorcycles and Personal and Household Goods	-1.6	0.5	-1.0	-0.6	0.5	1.9	2.1	2.8	2.7	2.4	1.2	3.8	1.2	3.4
Hotels and Restaurants	-3.9	-2.9	-1.7	-0.3	1.2	3.0	4.2	4.5	4.4	3.9	1.7	3.5	3.1	3.5
Transport, Storage and Communications	-0.5	0.9	1.2	1.9	3.1	3.4	4.0	4.0	4.6	3.8	1.6	5.7	1.2	5.1
Financial Intermediation	-3.8	0.1	-1.0	1.0	1.7	2.6	3.1	4.1	3.9	3.4	1.8	5.4	1.7	4.7
Real Estate, Renting and Business Activities	-1.1	-0.8	-0.4	0.2	0.8	1.5	1.9	1.9	1.6	1.5	1.0	1.3	1.4	1.7
Public Administration and Defence; Compulsory Social Security	-	-	-	-	-	-	-	-	-	-	-	-	-	-
Education	2.0	0.5	-0.8	-0.5	-0.9	-0.8	-1.1	0.3	2.8	2.5	1.7	4.3	2.5	6.2
Health and Social Work	0.1	-0.5	-1.8	-1.2	-1.1	1.3	-3.6	0.4	-2.4	-4.6	1.7	3.3	2.2	3.6
Other Community, Social and Personal Service Activities	1.1	0.7	0.9	1.1	1.7	2.5	2.3	3.0	2.5	2.9	1.7	3.9	1.8	2.9
Private Households with Employed Persons	-	-	-	-	-	-	-	-	-	-	-	-	-	-
<b>TOTAL</b>	<b>-0.9</b>	<b>0.0</b>	<b>0.0</b>	<b>0.7</b>	<b>1.7</b>	<b>2.7</b>	<b>2.8</b>	<b>3.5</b>	<b>3.3</b>	<b>2.9</b>	<b>1.7</b>	<b>4.3</b>	<b>1.8</b>	<b>4.0</b>

**TABLE 11 NET CAPITAL STOCK OF PUBLIC SECTOR AT CURRENT REPLACEMENT COST**

(Unit - Millions of Baht)

Sector	1999	2000	2001	2002	2003	2004	2005	2006	2007	2008	2009	2010	2011r	2012p
<b>Agriculture</b>	<b>569,729</b>	<b>606,237</b>	<b>655,087</b>	<b>688,886</b>	<b>748,996</b>	<b>817,597</b>	<b>887,966</b>	<b>935,171</b>	<b>1,021,086</b>	<b>1,226,323</b>	<b>1,206,702</b>	<b>1,308,936</b>	<b>1,396,481</b>	<b>1,496,190</b>
Agriculture, Hunting and Forestry	398,810	424,366	458,561	482,220	524,297	572,318	621,576	654,620	714,760	858,426	844,691	916,255	977,537	1,050,687
Fishing	170,919	181,871	196,526	206,666	224,699	245,279	266,390	280,551	306,326	367,897	362,011	392,681	418,944	445,503
<b>Non-Agriculture</b>	<b>3,901,565</b>	<b>4,183,111</b>	<b>4,519,809</b>	<b>4,688,619</b>	<b>5,032,389</b>	<b>5,448,601</b>	<b>6,111,052</b>	<b>6,625,739</b>	<b>7,084,639</b>	<b>8,018,532</b>	<b>7,892,529</b>	<b>8,566,932</b>	<b>9,380,082</b>	<b>9,926,968</b>
Mining and Quarrying	27,806	31,215	33,949	35,837	39,383	43,779	48,542	52,639	57,234	67,708	67,234	73,276	79,320	85,381
Manufacturing	123,693	136,573	142,716	148,726	167,159	178,677	195,437	208,339	223,102	254,336	268,833	294,217	298,059	312,515
Electricity, Gas and Water Supply	1,012,083	1,065,541	1,130,074	1,183,500	1,286,245	1,414,195	1,572,213	1,749,683	1,887,308	2,136,621	2,029,790	2,268,934	2,402,111	2,571,460
Construction	217,858	231,185	246,977	256,791	278,084	304,162	340,680	376,130	403,888	453,339	439,445	489,594	531,179	553,647
Wholesale and Retail Trade; Repair of Motor Vehicles, Motorcycles and Personal and Household Goods	11,127	11,560	12,075	12,083	12,883	13,801	14,949	15,963	16,726	18,850	18,247	19,439	20,651	21,694
Hotels and Restaurants	196,386	205,127	211,490	213,587	224,518	240,911	269,470	285,682	296,546	333,722	328,465	356,500	430,296	456,926
Transport, Storage and Communications	1,410,053	1,531,038	1,706,892	1,778,792	1,899,858	2,045,814	2,359,030	2,525,854	2,671,363	3,004,866	3,015,988	3,203,773	3,593,113	3,769,894
Financial Intermediation	33,480	34,953	36,297	37,712	40,143	45,649	50,364	54,882	58,789	66,608	66,675	72,770	76,428	80,937
Real Estate, Renting and Business Activities	233,994	253,582	276,438	293,276	321,823	352,725	385,962	423,470	462,862	538,771	526,918	569,506	617,124	661,248
Public Administration and Defence; Compulsory Social Security	271,136	289,641	307,412	306,125	326,702	350,235	383,126	406,738	427,052	487,266	484,830	517,674	555,397	585,833
Education	101,756	108,058	114,526	117,849	123,939	127,227	135,116	141,136	150,226	171,790	170,084	184,516	201,452	217,040
Health and Social Work	157,735	174,574	182,160	179,910	176,979	187,992	199,211	214,902	245,659	273,849	268,935	292,339	324,220	342,695
Other Community, Social and Personal Service Activities	104,458	110,064	118,803	124,431	134,673	143,434	156,952	170,321	183,884	210,806	207,085	224,394	250,732	267,698
Private Households with Employed Persons	-	-	-	-	-	-	-	-	-	-	-	-	-	-
<b>TOTAL</b>	<b>4,471,294</b>	<b>4,789,348</b>	<b>5,174,896</b>	<b>5,377,505</b>	<b>5,781,385</b>	<b>6,266,198</b>	<b>6,999,018</b>	<b>7,560,910</b>	<b>8,105,725</b>	<b>9,244,855</b>	<b>9,099,231</b>	<b>9,875,868</b>	<b>10,776,563</b>	<b>11,423,158</b>

**TABLE 11-1 GROWTH RATE OF NET CAPITAL STOCK OF PUBLIC SECTOR AT CURRENT REPLACEMENT COST**

(Unit - Percentage)

Sector	1999	2000	2001	2002	2003	2004	2005	2006	2007	2008	2009	2010	2011r	2012p
<b>Agriculture</b>	<b>6.1</b>	<b>6.4</b>	<b>8.1</b>	<b>5.2</b>	<b>8.7</b>	<b>9.2</b>	<b>8.6</b>	<b>5.3</b>	<b>9.2</b>	<b>20.1</b>	<b>-1.6</b>	<b>8.5</b>	<b>6.7</b>	<b>7.1</b>
Agriculture, Hunting and Forestry	6.1	6.4	8.1	5.2	8.7	9.2	8.6	5.3	9.2	20.1	-1.6	8.5	6.7	7.5
Fishing	6.1	6.4	8.1	5.2	8.7	9.2	8.6	5.3	9.2	20.1	-1.6	8.5	6.7	6.3
<b>Non-Agriculture</b>	<b>4.7</b>	<b>7.2</b>	<b>8.0</b>	<b>3.7</b>	<b>7.3</b>	<b>8.3</b>	<b>12.2</b>	<b>8.4</b>	<b>6.9</b>	<b>13.2</b>	<b>-1.6</b>	<b>8.5</b>	<b>9.5</b>	<b>5.8</b>
Mining and Quarrying	6.8	12.3	8.8	5.6	9.9	11.2	10.9	8.4	8.7	18.3	-0.7	9.0	8.2	7.6
Manufacturing	-4.0	10.4	4.5	4.2	12.4	6.9	9.4	6.6	7.1	14.0	5.7	9.4	1.3	4.9
Electricity, Gas and Water Supply	6.5	5.3	6.1	4.7	8.7	9.9	11.2	11.3	7.9	13.2	-5.0	11.8	5.9	7.1
Construction	5.0	6.1	6.8	4.0	8.3	9.4	12.0	10.4	7.4	12.2	-3.1	11.4	8.5	4.2
Wholesale and Retail Trade; Repair of Motor Vehicles, Motorcycles and Personal and Household Goods	-0.5	3.9	4.5	0.1	6.6	7.1	8.3	6.8	4.8	12.7	-3.2	6.5	6.2	5.1
Hotels and Restaurants	1.1	4.5	3.1	1.0	5.1	7.3	11.9	6.0	3.8	12.5	-1.6	8.5	20.7	6.2
Transport, Storage and Communications	4.4	8.6	11.5	4.2	6.8	7.7	15.3	7.1	5.8	12.5	0.4	6.2	12.2	4.9
Financial Intermediation	0.2	4.4	3.8	3.9	6.4	13.7	10.3	9.0	7.1	13.3	0.1	9.1	5.0	5.9
Real Estate, Renting and Business Activities	9.0	8.4	9.0	6.1	9.7	9.6	9.4	9.7	9.3	16.4	-2.2	8.1	8.4	7.1
Public Administration and Defence; Compulsory Social Security	-0.1	6.8	6.1	-0.4	6.7	7.2	9.4	6.2	5.0	14.1	-0.5	6.8	7.3	5.5
Education	7.2	6.2	6.0	2.9	5.2	2.7	6.2	4.5	6.4	14.4	-1.0	8.5	9.2	7.7
Health and Social Work	9.2	10.7	4.3	-1.2	-1.6	6.2	6.0	7.9	14.3	11.5	-1.8	8.7	10.9	5.7
Other Community, Social and Personal Service Activities	5.2	5.4	7.9	4.7	8.2	6.5	9.4	8.5	8.0	14.6	-1.8	8.4	11.7	6.8
Private Households with Employed Persons	-	-	-	-	-	-	-	-	-	-	-	-	-	-
<b>TOTAL</b>	<b>4.9</b>	<b>7.1</b>	<b>8.1</b>	<b>3.9</b>	<b>7.5</b>	<b>8.4</b>	<b>11.7</b>	<b>8.0</b>	<b>7.2</b>	<b>14.1</b>	<b>-1.6</b>	<b>8.5</b>	<b>9.1</b>	<b>6.0</b>

**TABLE 12 NET CAPITAL STOCK OF PUBLIC SECTOR AT 1988 PRICES**

(Unit - Millions of Baht)

Sector	1999	2000	2001	2002	2003	2004	2005	2006	2007	2008	2009	2010	2011r	2012p
<b>Agriculture</b>	<b>340,038</b>	<b>357,587</b>	<b>375,748</b>	<b>392,364</b>	<b>406,641</b>	<b>420,687</b>	<b>436,336</b>	<b>453,656</b>	<b>473,276</b>	<b>491,733</b>	<b>510,419</b>	<b>531,187</b>	<b>544,180</b>	<b>559,907</b>
Agriculture, Hunting and Forestry	238,027	250,311	263,024	274,655	284,649	294,481	305,435	317,559	331,293	344,213	357,293	371,831	380,926	390,955
Fishing	102,011	107,276	112,724	117,709	121,992	126,206	130,901	136,097	141,983	147,520	153,126	159,356	163,254	168,952
<b>Non-Agriculture</b>	<b>2,199,210</b>	<b>2,291,577</b>	<b>2,364,201</b>	<b>2,432,499</b>	<b>2,493,985</b>	<b>2,558,272</b>	<b>2,639,334</b>	<b>2,725,119</b>	<b>2,824,924</b>	<b>2,911,739</b>	<b>2,991,022</b>	<b>3,023,499</b>	<b>3,119,812</b>	<b>3,194,585</b>
Mining and Quarrying	16,654	18,263	19,175	20,191	21,130	22,264	23,397	24,606	25,988	26,110	27,311	28,626	29,530	30,564
Manufacturing	72,261	73,904	75,084	79,024	78,244	79,534	80,504	84,055	90,366	98,047	101,871	103,916	106,149	108,824
Electricity, Gas and Water Supply	595,090	614,572	632,581	654,759	672,750	695,469	719,168	746,264	773,219	797,189	818,713	811,056	851,870	868,907
Construction	129,684	132,753	135,924	141,018	144,229	149,131	154,900	161,257	168,377	174,938	180,175	180,585	189,164	195,652
Wholesale and Retail Trade; Repair of Motor Vehicles, Motorcycles and Personal and Household Goods	6,641	6,688	6,722	6,720	6,763	6,863	6,971	7,102	7,288	7,463	7,582	7,691	7,771	7,859
Hotels and Restaurants	105,652	106,957	108,742	111,066	113,568	116,962	122,426	127,799	134,037	139,654	143,674	159,399	170,670	176,461
Transport, Storage and Communications	733,748	775,176	805,683	824,824	851,280	866,830	898,609	923,316	954,323	980,380	1,000,743	998,559	1,008,647	1,035,881
Financial Intermediation	19,700	19,635	19,742	20,501	20,099	21,528	22,058	22,930	24,140	25,444	26,258	26,810	27,362	27,977
Real Estate, Renting and Business Activities	139,060	149,277	158,396	166,949	174,418	181,789	189,795	198,202	207,460	215,758	225,036	235,259	241,920	249,831
Public Administration and Defence; Compulsory Social Security	164,035	168,136	170,016	170,647	172,877	176,792	182,186	187,756	195,507	202,545	208,419	215,337	219,825	224,793
Education	57,653	60,419	61,973	63,124	63,159	62,609	62,200	62,307	64,357	66,163	69,068	70,303	71,228	72,086
Health and Social Work	98,051	101,773	103,381	104,537	104,424	105,720	102,344	102,608	100,597	96,253	98,423	100,529	107,620	108,880
Other Community, Social and Personal Service Activities	60,981	64,024	66,782	69,139	71,044	72,781	74,776	76,917	79,265	81,795	83,749	85,429	88,056	86,870
Private Households with Employed Persons	-	-	-	-	-	-	-	-	-	-	-	-	-	-
<b>TOTAL</b>	<b>2,539,248</b>	<b>2,649,164</b>	<b>2,739,949</b>	<b>2,824,863</b>	<b>2,900,626</b>	<b>2,978,959</b>	<b>3,075,670</b>	<b>3,178,775</b>	<b>3,298,200</b>	<b>3,403,472</b>	<b>3,501,441</b>	<b>3,554,686</b>	<b>3,663,992</b>	<b>3,754,492</b>

**TABLE 12-1 GROWTH RATE OF NET CAPITAL STOCK OF PUBLIC SECTOR AT 1988 PRICES**

(Unit - Percentage)

Sector	1999	2000	2001	2002	2003	2004	2005	2006	2007	2008	2009	2010	2011r	2012p
<b>Agriculture</b>	<b>7.1</b>	<b>5.2</b>	<b>5.1</b>	<b>4.4</b>	<b>3.6</b>	<b>3.5</b>	<b>3.7</b>	<b>4.0</b>	<b>4.3</b>	<b>3.9</b>	<b>3.8</b>	<b>4.1</b>	<b>2.4</b>	<b>2.9</b>
Agriculture, Hunting and Forestry	7.1	5.2	5.1	4.4	3.6	3.5	3.7	4.0	4.3	3.9	3.8	4.1	2.4	2.6
Fishing	7.1	5.2	5.1	4.4	3.6	3.5	3.7	4.0	4.3	3.9	3.8	4.1	2.4	3.5
<b>Non-Agriculture</b>	<b>5.7</b>	<b>4.2</b>	<b>3.2</b>	<b>2.9</b>	<b>2.5</b>	<b>2.6</b>	<b>3.2</b>	<b>3.3</b>	<b>3.7</b>	<b>3.1</b>	<b>2.7</b>	<b>1.1</b>	<b>3.2</b>	<b>2.4</b>
Mining and Quarrying	8.3	9.7	5.0	5.3	4.7	5.4	5.1	5.2	5.6	0.5	4.6	4.8	3.2	3.5
Manufacturing	2.5	2.3	1.6	5.2	-1.0	1.6	1.2	4.4	7.5	8.5	3.9	2.0	2.1	2.5
Electricity, Gas and Water Supply	7.2	3.3	2.9	3.5	2.7	3.4	3.4	3.8	3.6	3.1	2.7	-0.9	5.0	2.0
Construction	6.9	2.4	2.4	3.7	2.3	3.4	3.9	4.1	4.4	3.9	3.0	0.2	4.8	3.4
Wholesale and Retail Trade; Repair of Motor Vehicles, Motorcycles and Personal and Household Goods	1.3	0.7	0.5	-0.0	0.6	1.5	1.6	1.9	2.6	2.4	1.6	1.4	1.0	1.1
Hotels and Restaurants	2.7	1.2	1.7	2.1	2.3	3.0	4.7	4.4	4.9	4.2	2.9	10.9	7.1	3.4
Transport, Storage and Communications	4.6	5.6	3.9	2.4	3.2	1.8	3.7	2.7	3.4	2.7	2.1	-0.2	1.0	2.7
Financial Intermediation	3.4	-0.3	0.5	3.8	-2.0	7.1	2.5	4.0	5.3	5.4	3.2	2.1	2.1	2.2
Real Estate, Renting and Business Activities	9.4	7.3	6.1	5.4	4.5	4.2	4.4	4.4	4.7	4.0	4.3	4.5	2.8	3.3
Public Administration and Defence; Compulsory Social Security	2.5	2.5	1.1	0.4	1.3	2.3	3.1	3.1	4.1	3.6	2.9	3.3	2.1	2.3
Education	9.0	4.8	2.6	1.9	0.1	-0.9	-0.7	0.2	3.3	2.8	4.4	1.8	1.3	1.2
Health and Social Work	6.9	3.8	1.6	1.1	-0.1	1.2	-3.2	0.3	-2.0	-4.3	2.3	2.1	7.1	1.2
Other Community, Social and Personal Service Activities	8.0	5.0	4.3	3.5	2.8	2.4	2.7	2.9	3.1	3.2	2.4	2.0	3.1	-1.3
Private Households with Employed Persons	-	-	-	-	-	-	-	-	-	-	-	-	-	-
<b>TOTAL</b>	<b>5.9</b>	<b>4.3</b>	<b>3.4</b>	<b>3.1</b>	<b>2.7</b>	<b>2.7</b>	<b>3.2</b>	<b>3.4</b>	<b>3.8</b>	<b>3.2</b>	<b>2.9</b>	<b>1.5</b>	<b>3.1</b>	<b>2.5</b>

**TABLE 13 ANNUAL DEPRECIATION OF THAILAND AT CURRENT REPLACEMENT COST**

(Unit - Millions of Baht)

Sector	1999	2000	2001	2002	2003	2004	2005	2006	2007	2008	2009	2010	2011r	2012p
<b>Agriculture</b>	<b>58,591</b>	<b>64,868</b>	<b>73,520</b>	<b>74,885</b>	<b>77,615</b>	<b>82,643</b>	<b>93,193</b>	<b>100,184</b>	<b>103,648</b>	<b>115,259</b>	<b>118,109</b>	<b>130,003</b>	<b>138,626</b>	<b>149,163</b>
Agriculture, Hunting and Forestry	46,873	51,894	58,816	59,908	62,092	66,114	74,554	80,147	82,918	92,207	94,487	104,003	110,904	119,067
Fishing	11,718	12,974	14,704	14,977	15,523	16,529	18,639	20,037	20,730	23,052	23,622	26,000	27,722	30,096
<b>Non-Agriculture</b>	<b>756,158</b>	<b>824,937</b>	<b>936,535</b>	<b>943,950</b>	<b>974,633</b>	<b>1,036,139</b>	<b>1,165,039</b>	<b>1,260,893</b>	<b>1,297,942</b>	<b>1,426,124</b>	<b>1,452,803</b>	<b>1,590,283</b>	<b>1,705,790</b>	<b>1,827,304</b>
Mining and Quarrying	13,492	15,285	17,583	17,548	17,865	18,981	21,622	23,336	23,703	25,692	26,652	29,408	31,267	33,566
Manufacturing	169,484	185,016	213,881	215,609	220,900	234,277	264,815	286,088	291,152	315,686	327,333	360,416	383,169	411,090
Electricity, Gas and Water Supply	36,826	39,771	43,130	45,006	48,961	53,548	59,631	65,777	71,037	81,479	80,420	91,819	96,923	104,425
Construction	34,204	38,880	44,783	44,240	44,841	47,264	53,645	57,458	58,082	62,457	65,339	72,109	74,697	79,380
Wholesale and Retail Trade; Repair of Motor Vehicles, Motorcycles and Personal and Household Goods	86,322	95,509	108,207	108,178	110,317	117,142	131,576	141,466	143,637	155,730	158,999	174,203	185,375	198,378
Hotels and Restaurants	52,006	61,130	63,252	60,180	58,994	58,751	66,133	68,052	65,944	71,515	70,289	74,235	79,592	84,988
Transport, Storage and Communications	152,155	161,273	197,318	205,483	213,292	239,281	273,530	310,209	311,434	343,753	351,473	382,848	413,263	442,840
Financial Intermediation	16,418	18,035	20,435	20,743	21,173	22,480	25,322	27,252	27,777	30,170	31,154	34,318	36,407	39,032
Real Estate, Renting and Business Activities	95,067	97,494	101,685	104,654	112,010	121,044	129,791	141,426	151,061	169,045	164,235	174,563	194,187	206,901
Public Administration and Defence; Compulsory Social Security	15,670	17,360	18,488	17,272	18,073	18,596	20,115	20,764	21,438	23,775	24,678	26,920	29,241	30,838
Education	17,278	19,015	20,548	20,373	20,855	21,446	21,948	23,228	23,404	24,806	26,281	28,885	30,482	33,016
Health and Social Work	53,048	61,841	71,291	68,688	70,401	65,320	77,874	74,619	86,169	97,255	101,114	113,724	122,357	131,495
Other Community, Social and Personal Service Activities	14,188	14,328	15,934	15,976	16,951	18,009	19,037	21,218	23,104	24,761	24,836	26,835	28,830	31,355
Private Households with Employed Persons	-	-	-	-	-	-	-	-	-	-	-	-	-	-
<b>TOTAL</b>	<b>814,749</b>	<b>889,805</b>	<b>1,010,055</b>	<b>1,018,835</b>	<b>1,052,248</b>	<b>1,118,782</b>	<b>1,258,232</b>	<b>1,361,077</b>	<b>1,401,590</b>	<b>1,541,383</b>	<b>1,570,912</b>	<b>1,720,286</b>	<b>1,844,416</b>	<b>1,976,467</b>

**TABLE 13-1 GROWTH RATE OF ANNUAL DEPRECIATION OF THAILAND AT CURRENT REPLACEMENT COST**

(Unit - Percentage)

Sector	1999	2000	2001	2002	2003	2004	2005	2006	2007	2008	2009	2010	2011r	2012p
<b>Agriculture</b>	<b>-9.5</b>	<b>10.7</b>	<b>13.3</b>	<b>1.9</b>	<b>3.6</b>	<b>6.5</b>	<b>12.8</b>	<b>7.5</b>	<b>3.5</b>	<b>11.2</b>	<b>2.5</b>	<b>10.1</b>	<b>6.6</b>	<b>7.6</b>
Agriculture, Hunting and Forestry	-9.5	10.7	13.3	1.9	3.6	6.5	12.8	7.5	3.5	11.2	2.5	10.1	6.6	7.4
Fishing	-9.5	10.7	13.3	1.9	3.6	6.5	12.8	7.5	3.5	11.2	2.5	10.1	6.6	8.6
<b>Non-Agriculture</b>	<b>-7.3</b>	<b>9.1</b>	<b>13.5</b>	<b>0.8</b>	<b>3.3</b>	<b>6.3</b>	<b>12.4</b>	<b>8.2</b>	<b>2.9</b>	<b>9.9</b>	<b>1.9</b>	<b>9.5</b>	<b>7.3</b>	<b>7.1</b>
Mining and Quarrying	-11.4	13.3	15.0	-0.2	1.8	6.2	13.9	7.9	1.6	8.4	3.7	10.3	6.3	7.4
Manufacturing	-9.8	9.2	15.6	0.8	2.5	6.1	13.0	8.0	1.8	8.4	3.7	10.1	6.3	7.3
Electricity, Gas and Water Supply	7.2	8.0	8.4	4.3	8.8	9.4	11.4	10.3	8.0	14.7	-1.3	14.2	5.6	7.7
Construction	-9.1	13.7	15.2	-1.2	1.4	5.4	13.5	7.1	1.1	7.5	4.6	10.4	3.6	6.3
Wholesale and Retail Trade; Repair of Motor Vehicles, Motorcycles and Personal and Household Goods	-10.2	10.6	13.3	-0.0	2.0	6.2	12.3	7.5	1.5	8.4	2.1	9.6	6.4	7.0
Hotels and Restaurants	-19.6	17.5	3.5	-4.9	-2.0	-0.4	12.6	2.9	-3.1	8.4	-1.7	5.6	7.2	6.8
Transport, Storage and Communications	-6.9	6.0	22.4	4.1	3.8	12.2	14.3	13.4	0.4	10.4	2.2	8.9	7.9	7.2
Financial Intermediation	-13.0	9.8	13.3	1.5	2.1	6.2	12.6	7.6	1.9	8.6	3.3	10.2	6.1	7.2
Real Estate, Renting and Business Activities	1.9	2.6	4.3	2.9	7.0	8.1	7.2	9.0	6.8	11.9	-2.8	6.3	11.2	6.5
Public Administration and Defence; Compulsory Social Security	-5.2	10.8	6.5	-6.6	4.6	2.9	8.2	3.2	3.2	10.9	3.8	9.1	8.6	5.5
Education	-7.7	10.1	8.1	-0.9	2.4	2.8	2.3	5.8	0.8	6.0	5.9	9.9	5.5	8.3
Health and Social Work	-2.0	16.6	15.3	-3.7	2.5	-7.2	19.2	-4.2	15.5	12.9	4.0	12.5	7.6	7.5
Other Community, Social and Personal Service Activities	-5.7	1.0	11.2	0.3	6.1	6.2	5.7	11.5	8.9	7.2	0.3	8.0	7.4	8.8
Private Households with Employed Persons	-	-	-	-	-	-	-	-	-	-	-	-	-	-
<b>TOTAL</b>	<b>-7.5</b>	<b>9.2</b>	<b>13.5</b>	<b>0.9</b>	<b>3.3</b>	<b>6.3</b>	<b>12.5</b>	<b>8.2</b>	<b>3.0</b>	<b>10.0</b>	<b>1.9</b>	<b>9.5</b>	<b>7.2</b>	<b>7.2</b>

**TABLE 14 ANNUAL DEPRECIATION OF THAILAND AT 1988 PRICES**

(Unit - Millions of Baht)

Sector	1999	2000	2001	2002	2003	2004	2005	2006	2007	2008	2009	2010	2011r	2012p
<b>Agriculture</b>	<b>33,838</b>	<b>34,504</b>	<b>36,163</b>	<b>36,653</b>	<b>37,434</b>	<b>38,533</b>	<b>40,189</b>	<b>41,847</b>	<b>43,700</b>	<b>45,691</b>	<b>47,100</b>	<b>50,016</b>	<b>51,060</b>	<b>53,646</b>
Agriculture, Hunting and Forestry	27,070	27,603	28,930	29,322	29,947	30,826	32,151	33,478	34,960	36,553	37,680	40,013	40,850	43,094
Fishing	6,768	6,901	7,233	7,331	7,487	7,707	8,038	8,369	8,740	9,138	9,420	10,003	10,210	10,552
<b>Non-Agriculture</b>	<b>439,840</b>	<b>444,135</b>	<b>464,907</b>	<b>466,617</b>	<b>473,122</b>	<b>485,380</b>	<b>502,776</b>	<b>520,543</b>	<b>540,206</b>	<b>562,412</b>	<b>577,552</b>	<b>606,997</b>	<b>620,193</b>	<b>648,818</b>
Mining and Quarrying	6,764	6,902	7,229	7,202	7,290	7,509	7,832	8,140	8,483	8,870	9,067	9,671	9,830	10,366
Manufacturing	94,485	93,421	98,813	99,194	100,507	103,293	107,137	111,414	116,043	121,452	124,627	132,517	134,835	142,113
Electricity, Gas and Water Supply	21,797	22,691	23,632	24,646	25,176	26,012	26,884	27,967	29,282	30,893	32,252	32,900	34,709	36,096
Construction	20,311	20,767	21,779	21,487	21,451	21,984	22,816	23,581	24,518	25,673	26,403	28,170	28,647	29,978
Wholesale and Retail Trade; Repair of Motor Vehicles, Motorcycles and Personal and Household Goods	53,544	54,388	56,789	56,201	56,660	58,169	60,343	62,336	64,466	66,921	68,334	72,297	73,218	76,791
Hotels and Restaurants	27,756	26,900	27,086	26,495	26,301	26,609	27,751	29,301	31,103	33,136	34,038	35,801	36,577	38,410
Transport, Storage and Communications	86,293	87,472	93,577	93,984	96,468	99,610	104,773	109,781	114,912	120,864	123,873	128,743	131,251	137,876
Financial Intermediation	10,721	10,759	11,224	11,275	11,326	11,655	12,075	12,508	13,013	13,601	13,920	14,777	15,017	15,797
Real Estate, Renting and Business Activities	55,819	56,712	57,752	59,067	60,608	62,474	64,534	66,670	68,773	70,889	72,824	74,952	77,109	79,482
Public Administration and Defence; Compulsory Social Security	9,763	9,967	9,859	9,507	9,267	9,187	9,253	9,383	9,795	10,344	10,819	11,392	11,828	11,829
Education	9,285	9,384	9,732	9,669	9,643	9,634	9,709	9,843	10,128	10,556	11,843	13,806	14,028	14,822
Health and Social Work	35,516	36,816	39,032	39,344	39,651	40,155	40,140	39,616	39,182	38,132	38,870	40,599	41,415	43,295
Other Community, Social and Personal Service Activities	7,786	7,956	8,403	8,546	8,774	9,089	9,529	10,003	10,508	11,081	10,682	11,372	11,729	11,963
Private Households with Employed Persons	-	-	-	-	-	-	-	-	-	-	-	-	-	-
<b>TOTAL</b>	<b>473,678</b>	<b>478,639</b>	<b>501,070</b>	<b>503,270</b>	<b>510,556</b>	<b>523,913</b>	<b>542,965</b>	<b>562,390</b>	<b>583,906</b>	<b>608,103</b>	<b>624,652</b>	<b>657,013</b>	<b>671,253</b>	<b>702,464</b>

**TABLE 14-1 GROWTH RATE OF ANNUAL DEPRECIATION OF THAILAND AT 1988 PRICES**

(Unit - Percentage)

Sector	1999	2000	2001	2002	2003	2004	2005	2006	2007	2008	2009	2010	2011r	2012p
<b>Agriculture</b>	<b>-3.7</b>	<b>2.0</b>	<b>4.8</b>	<b>1.4</b>	<b>2.1</b>	<b>2.9</b>	<b>4.3</b>	<b>4.1</b>	<b>4.4</b>	<b>4.6</b>	<b>3.1</b>	<b>6.2</b>	<b>2.1</b>	<b>5.1</b>
Agriculture, Hunting and Forestry	-3.7	2.0	4.8	1.4	2.1	2.9	4.3	4.1	4.4	4.6	3.1	6.2	2.1	5.5
Fishing	-3.7	2.0	4.8	1.4	2.1	2.9	4.3	4.1	4.4	4.6	3.1	6.2	2.1	3.3
<b>Non-Agriculture</b>	<b>-2.3</b>	<b>1.0</b>	<b>4.7</b>	<b>0.4</b>	<b>1.4</b>	<b>2.6</b>	<b>3.6</b>	<b>3.5</b>	<b>3.8</b>	<b>4.1</b>	<b>2.7</b>	<b>5.1</b>	<b>2.2</b>	<b>4.6</b>
Mining and Quarrying	-5.7	2.0	4.7	-0.4	1.2	3.0	4.3	3.9	4.2	4.6	2.2	6.7	1.6	5.5
Manufacturing	-3.5	-1.1	5.8	0.4	1.3	2.8	3.7	4.0	4.2	4.7	2.6	6.3	1.7	5.4
Electricity, Gas and Water Supply	9.6	4.1	4.1	4.3	2.2	3.3	3.4	4.0	4.7	5.5	4.4	2.0	5.5	4.0
Construction	-2.0	2.2	4.9	-1.3	-0.2	2.5	3.8	3.4	4.0	4.7	2.8	6.7	1.7	4.6
Wholesale and Retail Trade; Repair of Motor Vehicles, Motorcycles and Personal and Household Goods	-4.2	1.6	4.4	-1.0	0.8	2.7	3.7	3.3	3.4	3.8	2.1	5.8	1.3	4.9
Hotels and Restaurants	-6.0	-3.1	0.7	-2.2	-0.7	1.2	4.3	5.6	6.1	6.5	2.7	5.2	2.2	5.0
Transport, Storage and Communications	-4.0	1.4	7.0	0.4	2.6	3.3	5.2	4.8	4.7	5.2	2.5	3.9	1.9	5.0
Financial Intermediation	-6.2	0.4	4.3	0.5	0.5	2.9	3.6	3.6	4.0	4.5	2.3	6.2	1.6	5.2
Real Estate, Renting and Business Activities	1.4	1.6	1.8	2.3	2.6	3.1	3.3	3.3	3.2	3.1	2.7	2.9	2.9	3.1
Public Administration and Defence; Compulsory Social Security	-0.4	2.1	-1.1	-3.6	-2.5	-0.9	0.7	1.4	4.4	5.6	4.6	5.3	3.8	0.0
Education	-1.3	1.1	3.7	-0.6	-0.3	-0.1	0.8	1.4	2.9	4.2	12.2	16.6	1.6	5.7
Health and Social Work	0.3	3.7	6.0	0.8	0.8	1.3	-0.0	-1.3	-1.1	-2.7	1.9	4.4	2.0	4.5
Other Community, Social and Personal Service Activities	-0.9	2.2	5.6	1.7	2.7	3.6	4.8	5.0	5.0	5.5	-3.6	6.5	3.1	2.0
Private Households with Employed Persons	-	-	-	-	-	-	-	-	-	-	-	-	-	-
<b>TOTAL</b>	<b>-2.4</b>	<b>1.0</b>	<b>4.7</b>	<b>0.4</b>	<b>1.4</b>	<b>2.6</b>	<b>3.6</b>	<b>3.6</b>	<b>3.8</b>	<b>4.1</b>	<b>2.7</b>	<b>5.2</b>	<b>2.2</b>	<b>4.6</b>

**TABLE 15 ANNUAL DEPRECIATION OF PRIVATE SECTOR AT CURRENT REPLACEMENT COST**

(Unit - Millions of Baht)

Sector	1999	2000	2001	2002	2003	2004	2005	2006	2007	2008	2009	2010	2011r	2012p
<b>Agriculture</b>	<b>42,568</b>	<b>47,646</b>	<b>54,942</b>	<b>55,436</b>	<b>56,372</b>	<b>59,412</b>	<b>67,791</b>	<b>73,301</b>	<b>74,250</b>	<b>79,893</b>	<b>82,849</b>	<b>91,425</b>	<b>96,986</b>	<b>104,163</b>
Agriculture, Hunting and Forestry	35,657	39,839	45,811	46,294	47,222	49,852	56,773	61,329	62,339	67,451	69,805	76,998	81,756	87,527
Fishing	6,911	7,807	9,131	9,142	9,150	9,560	11,018	11,972	11,911	12,442	13,044	14,427	15,230	16,636
<b>Non-Agriculture</b>	<b>601,610</b>	<b>653,117</b>	<b>740,271</b>	<b>746,002</b>	<b>766,147</b>	<b>815,016</b>	<b>913,716</b>	<b>988,312</b>	<b>1,010,748</b>	<b>1,101,459</b>	<b>1,123,952</b>	<b>1,228,259</b>	<b>1,314,417</b>	<b>1,408,155</b>
Mining and Quarrying	12,433	14,068	16,289	16,250	16,463	17,447	19,931	21,533	21,770	23,446	24,361	26,883	28,509	30,593
Manufacturing	159,873	173,962	201,797	203,355	207,782	220,620	250,031	270,859	275,306	297,606	307,427	338,147	360,334	386,638
Electricity, Gas and Water Supply	5,524	5,966	6,469	6,751	7,344	8,032	8,945	9,866	10,655	12,222	12,063	13,773	14,549	15,123
Construction	23,570	27,147	31,965	31,358	31,195	32,947	37,901	40,728	40,454	42,824	45,294	49,376	49,092	52,700
Wholesale and Retail Trade; Repair of Motor Vehicles, Motorcycles and Personal and Household Goods	85,811	94,956	107,618	107,611	109,715	116,509	130,890	140,747	142,889	154,891	158,145	173,271	184,375	197,318
Hotels and Restaurants	41,118	48,143	49,798	47,339	46,114	45,919	51,588	53,079	51,049	53,979	54,577	56,948	60,906	65,030
Transport, Storage and Communications	102,553	106,677	128,454	134,916	140,208	159,762	179,415	203,989	202,387	221,801	228,248	250,633	268,352	287,915
Financial Intermediation	14,634	16,077	18,312	18,596	19,000	19,992	22,607	24,398	24,780	26,762	27,538	30,287	32,187	34,504
Real Estate, Renting and Business Activities	89,273	91,159	94,720	97,202	103,743	111,897	119,690	130,245	138,751	154,568	149,932	158,956	177,094	188,375
Public Administration and Defence; Compulsory Social Security	-	-	-	-	-	-	-	-	-	-	-	-	-	-
Education	13,661	14,975	16,177	16,026	16,302	16,762	17,121	18,117	18,117	19,012	19,421	21,238	22,314	24,197
Health and Social Work	41,942	48,703	56,127	54,031	55,031	51,053	60,747	58,201	66,705	75,371	77,559	87,547	94,032	101,325
Other Community, Social and Personal Service Activities	11,218	11,284	12,545	12,567	13,250	14,076	14,850	16,550	17,885	18,977	19,387	21,200	22,673	24,437
Private Households with Employed Persons	-	-	-	-	-	-	-	-	-	-	-	-	-	-
<b>TOTAL</b>	<b>644,178</b>	<b>700,763</b>	<b>795,213</b>	<b>801,438</b>	<b>822,519</b>	<b>874,428</b>	<b>981,507</b>	<b>1,061,613</b>	<b>1,084,998</b>	<b>1,181,352</b>	<b>1,206,801</b>	<b>1,319,684</b>	<b>1,411,403</b>	<b>1,512,318</b>

**TABLE 15-1 GROWTH RATE OF ANNUAL DEPRECIATION OF PRIVATE SECTOR AT CURRENT REPLACEMENT COST**

(Unit - Percentage)

Sector	1999	2000	2001	2002	2003	2004	2005	2006	2007	2008	2009	2010	2011r	2012p
<b>Agriculture</b>	<b>-14.7</b>	<b>11.9</b>	<b>15.3</b>	<b>0.9</b>	<b>1.7</b>	<b>5.4</b>	<b>14.1</b>	<b>8.1</b>	<b>1.3</b>	<b>7.6</b>	<b>3.7</b>	<b>10.4</b>	<b>6.1</b>	<b>7.4</b>
Agriculture, Hunting and Forestry	-13.9	11.7	15.0	1.1	2.0	5.6	13.9	8.0	1.6	8.2	3.5	10.3	6.2	7.1
Fishing	-18.7	13.0	17.0	0.1	0.1	4.5	15.3	8.7	-0.5	4.5	4.8	10.6	5.6	9.2
<b>Non-Agriculture</b>	<b>-8.9</b>	<b>8.6</b>	<b>13.3</b>	<b>0.8</b>	<b>2.7</b>	<b>6.4</b>	<b>12.1</b>	<b>8.2</b>	<b>2.3</b>	<b>9.0</b>	<b>2.0</b>	<b>9.3</b>	<b>7.0</b>	<b>7.1</b>
Mining and Quarrying	-12.3	13.2	15.8	-0.2	1.3	6.0	14.2	8.0	1.1	7.7	3.9	10.4	6.0	7.3
Manufacturing	-10.3	8.8	16.0	0.8	2.2	6.2	13.3	8.3	1.6	8.1	3.3	10.0	6.6	7.3
Electricity, Gas and Water Supply	7.2	8.0	8.4	4.4	8.8	9.4	11.4	10.3	8.0	14.7	-1.3	14.2	5.6	3.9
Construction	-14.3	15.2	17.7	-1.9	-0.5	5.6	15.0	7.5	-0.7	5.9	5.8	9.0	-0.6	7.3
Wholesale and Retail Trade; Repair of Motor Vehicles, Motorcycles and Personal and Household Goods	-10.2	10.7	13.3	-0.0	2.0	6.2	12.3	7.5	1.5	8.4	2.1	9.6	6.4	7.0
Hotels and Restaurants	-21.1	17.1	3.4	-4.9	-2.6	-0.4	12.3	2.9	-3.8	5.7	1.1	4.3	7.0	6.8
Transport, Storage and Communications	-7.9	4.0	20.4	5.0	3.9	13.9	12.3	13.7	-0.8	9.6	2.9	9.8	7.1	7.3
Financial Intermediation	-14.5	9.9	13.9	1.6	2.2	5.2	13.1	7.9	1.6	8.0	2.9	10.0	6.3	7.2
Real Estate, Renting and Business Activities	1.5	2.1	3.9	2.6	6.7	7.9	7.0	8.8	6.5	11.4	-3.0	6.0	11.4	6.4
Public Administration and Defence; Compulsory Social Security	-	-	-	-	-	-	-	-	-	-	-	-	-	-
Education	-9.5	9.6	8.0	-0.9	1.7	2.8	2.1	5.8	0.0	4.9	2.2	9.4	5.1	8.4
Health and Social Work	-3.9	16.1	15.2	-3.7	1.9	-7.2	19.0	-4.2	14.6	13.0	2.9	12.9	7.4	7.8
Other Community, Social and Personal Service Activities	-7.5	0.6	11.2	0.2	5.4	6.2	5.5	11.4	8.1	6.1	2.2	9.4	6.9	7.8
Private Households with Employed Persons	-	-	-	-	-	-	-	-	-	-	-	-	-	-
<b>TOTAL</b>	<b>-9.3</b>	<b>8.8</b>	<b>13.5</b>	<b>0.8</b>	<b>2.6</b>	<b>6.3</b>	<b>12.2</b>	<b>8.2</b>	<b>2.2</b>	<b>8.9</b>	<b>2.2</b>	<b>9.4</b>	<b>7.0</b>	<b>7.1</b>

**TABLE 16 ANNUAL DEPRECIATION OF PRIVATE SECTOR AT 1988 PRICES**

(Unit - Millions of Baht)

Sector	1999	2000	2001	2002	2003	2004	2005	2006	2007	2008	2009	2010	2011r	2012p
<b>Agriculture</b>	<b>24,209</b>	<b>24,378</b>	<b>25,597</b>	<b>25,611</b>	<b>25,968</b>	<b>26,621</b>	<b>27,769</b>	<b>28,866</b>	<b>30,062</b>	<b>31,385</b>	<b>32,107</b>	<b>34,282</b>	<b>34,759</b>	<b>36,719</b>
Agriculture, Hunting and Forestry	20,330	20,515	21,534	21,593	21,921	22,488	23,457	24,391	25,413	26,539	27,185	28,999	29,439	31,223
Fishing	3,879	3,863	4,063	4,018	4,047	4,133	4,312	4,475	4,649	4,846	4,922	5,283	5,320	5,496
<b>Non-Agriculture</b>	<b>351,137</b>	<b>351,338</b>	<b>367,874</b>	<b>367,902</b>	<b>373,342</b>	<b>383,949</b>	<b>398,396</b>	<b>412,947</b>	<b>428,041</b>	<b>444,734</b>	<b>454,991</b>	<b>480,939</b>	<b>488,825</b>	<b>512,834</b>
Mining and Quarrying	6,115	6,197	6,520	6,478	6,554	6,741	7,036	7,310	7,605	7,939	8,084	8,631	8,745	9,236
Manufacturing	88,751	87,419	92,660	92,780	94,329	97,158	101,049	105,222	109,500	114,209	116,949	124,470	126,418	133,295
Electricity, Gas and Water Supply	3,269	3,404	3,545	3,697	3,776	3,902	4,033	4,195	4,392	4,634	4,838	4,935	5,212	5,496
Construction	13,795	14,083	14,946	14,467	14,533	15,043	15,768	16,364	16,960	17,658	18,011	19,461	19,574	20,670
Wholesale and Retail Trade; Repair of Motor Vehicles, Motorcycles and Personal and Household Goods	53,232	54,072	56,472	55,890	56,351	57,859	60,031	62,019	64,137	66,574	67,973	71,922	72,831	76,392
Hotels and Restaurants	21,994	21,116	21,270	20,717	20,570	20,852	21,781	23,019	24,402	25,944	26,542	27,861	28,116	29,676
Transport, Storage and Communications	60,285	59,878	63,685	63,908	65,415	67,987	71,607	75,344	79,101	83,649	85,515	89,764	91,132	96,080
Financial Intermediation	9,652	9,674	10,117	10,131	10,265	10,502	10,916	11,322	11,765	12,247	12,493	13,285	13,462	14,175
Real Estate, Renting and Business Activities	52,373	52,985	53,768	54,828	56,134	57,764	59,571	61,439	63,249	65,083	66,711	68,507	70,406	72,483
Public Administration and Defence; Compulsory Social Security	-	-	-	-	-	-	-	-	-	-	-	-	-	-
Education	7,358	7,366	7,642	7,560	7,542	7,550	7,620	7,733	7,946	8,265	8,455	10,194	10,337	10,991
Health and Social Work	28,143	28,899	30,650	30,764	31,011	31,468	31,505	31,122	30,740	29,856	30,844	32,479	33,053	34,622
Other Community, Social and Personal Service Activities	6,170	6,245	6,599	6,682	6,862	7,123	7,479	7,858	8,244	8,676	8,576	9,430	9,539	9,718
Private Households with Employed Persons	-	-	-	-	-	-	-	-	-	-	-	-	-	-
<b>TOTAL</b>	<b>375,346</b>	<b>375,716</b>	<b>393,471</b>	<b>393,513</b>	<b>399,310</b>	<b>410,570</b>	<b>426,165</b>	<b>441,813</b>	<b>458,103</b>	<b>476,119</b>	<b>487,098</b>	<b>515,221</b>	<b>523,584</b>	<b>549,553</b>

**TABLE 16-1 GROWTH RATE OF ANNUAL DEPRECIATION OF PRIVATE SECTOR AT 1988 PRICES**

(Unit - Percentage)

Sector	1999	2000	2001	2002	2003	2004	2005	2006	2007	2008	2009	2010	2011r	2012p
<b>Agriculture</b>	<b>-8.2</b>	<b>0.7</b>	<b>5.0</b>	<b>0.1</b>	<b>1.4</b>	<b>2.5</b>	<b>4.3</b>	<b>4.0</b>	<b>4.1</b>	<b>4.4</b>	<b>2.3</b>	<b>6.8</b>	<b>1.4</b>	<b>5.6</b>
Agriculture, Hunting and Forestry	-7.5	0.9	5.0	0.3	1.5	2.6	4.3	4.0	4.2	4.4	2.4	6.7	1.5	6.1
Fishing	-11.8	-0.4	5.2	-1.1	0.7	2.1	4.3	3.8	3.9	4.2	1.6	7.3	0.7	3.3
<b>Non-Agriculture</b>	<b>-3.6</b>	<b>0.1</b>	<b>4.7</b>	<b>0.0</b>	<b>1.5</b>	<b>2.8</b>	<b>3.8</b>	<b>3.7</b>	<b>3.7</b>	<b>3.9</b>	<b>2.3</b>	<b>5.7</b>	<b>1.6</b>	<b>4.9</b>
Mining and Quarrying	-6.6	1.3	5.2	-0.6	1.2	2.9	4.4	3.9	4.0	4.4	1.8	6.8	1.3	5.6
Manufacturing	-4.0	-1.5	6.0	0.1	1.7	3.0	4.0	4.1	4.1	4.3	2.4	6.4	1.6	5.4
Electricity, Gas and Water Supply	9.6	4.1	4.1	4.3	2.1	3.3	3.4	4.0	4.7	5.5	4.4	2.0	5.6	5.4
Construction	-6.6	2.1	6.1	-3.2	0.5	3.5	4.8	3.8	3.6	4.1	2.0	8.1	0.6	5.6
Wholesale and Retail Trade; Repair of Motor Vehicles, Motorcycles and Personal and Household Goods	-4.2	1.6	4.4	-1.0	0.8	2.7	3.8	3.3	3.4	3.8	2.1	5.8	1.3	4.9
Hotels and Restaurants	-7.5	-4.0	0.7	-2.6	-0.7	1.4	4.5	5.7	6.0	6.3	2.3	5.0	0.9	5.5
Transport, Storage and Communications	-4.7	-0.7	6.4	0.4	2.4	3.9	5.3	5.2	5.0	5.7	2.2	5.0	1.5	5.4
Financial Intermediation	-7.5	0.2	4.6	0.1	1.3	2.3	3.9	3.7	3.9	4.1	2.0	6.3	1.3	5.3
Real Estate, Renting and Business Activities	0.9	1.2	1.5	2.0	2.4	2.9	3.1	3.1	2.9	2.9	2.5	2.7	2.8	3.0
Public Administration and Defence; Compulsory Social Security	-	-	-	-	-	-	-	-	-	-	-	-	-	-
Education	-2.8	0.1	3.7	-1.1	-0.2	0.1	0.9	1.5	2.8	4.0	2.3	20.6	1.4	6.3
Health and Social Work	-1.3	2.7	6.1	0.4	0.8	1.5	0.1	-1.2	-1.2	-2.9	3.3	5.3	1.8	4.7
Other Community, Social and Personal Service Activities	-2.5	1.2	5.7	1.3	2.7	3.8	5.0	5.1	4.9	5.2	-1.2	10.0	1.2	1.9
Private Households with Employed Persons	-	-	-	-	-	-	-	-	-	-	-	-	-	-
<b>TOTAL</b>	<b>-3.9</b>	<b>0.1</b>	<b>4.7</b>	<b>0.0</b>	<b>1.5</b>	<b>2.8</b>	<b>3.8</b>	<b>3.7</b>	<b>3.7</b>	<b>3.9</b>	<b>2.3</b>	<b>5.8</b>	<b>1.6</b>	<b>5.0</b>

**TABLE 17 ANNUAL DEPRECIATION OF PUBLIC SECTOR AT CURRENT REPLACEMENT COST**

(Unit - Millions of Baht)

Sector	1999	2000	2001	2002	2003	2004	2005	2006	2007	2008	2009	2010	2011r	2012p
<b>Agriculture</b>	<b>16,023</b>	<b>17,222</b>	<b>18,578</b>	<b>19,449</b>	<b>21,243</b>	<b>23,231</b>	<b>25,402</b>	<b>26,883</b>	<b>29,398</b>	<b>35,366</b>	<b>35,260</b>	<b>38,578</b>	<b>41,640</b>	<b>45,001</b>
Agriculture, Hunting and Forestry	11,216	12,055	13,005	13,614	14,870	16,262	17,781	18,818	20,579	24,756	24,682	27,005	29,148	31,541
Fishing	4,807	5,167	5,573	5,835	6,373	6,969	7,621	8,065	8,819	10,610	10,578	11,573	12,492	13,460
<b>Non-Agriculture</b>	<b>154,548</b>	<b>171,820</b>	<b>196,264</b>	<b>197,948</b>	<b>208,486</b>	<b>221,123</b>	<b>251,323</b>	<b>272,581</b>	<b>287,194</b>	<b>324,665</b>	<b>328,851</b>	<b>362,024</b>	<b>391,373</b>	<b>419,149</b>
Mining and Quarrying	1,059	1,217	1,294	1,298	1,402	1,534	1,691	1,803	1,933	2,246	2,291	2,525	2,758	2,973
Manufacturing	9,611	11,054	12,084	12,254	13,118	13,657	14,784	15,229	15,846	18,080	19,906	22,269	22,835	24,452
Electricity, Gas and Water Supply	31,302	33,805	36,661	38,255	41,617	45,516	50,686	55,911	60,382	69,257	68,357	78,046	82,374	89,302
Construction	10,634	11,733	12,818	12,882	13,646	14,317	15,744	16,730	17,628	19,633	20,045	22,733	25,605	26,680
Wholesale and Retail Trade; Repair of Motor Vehicles, Motorcycles and Personal and Household Goods	511	553	589	567	602	633	686	719	748	839	854	932	1,000	1,061
Hotels and Restaurants	10,888	12,987	13,454	12,841	12,880	12,832	14,545	14,973	14,895	17,536	15,712	17,287	18,686	19,958
Transport, Storage and Communications	49,602	54,596	68,864	70,567	73,084	79,519	94,115	106,220	109,047	121,952	123,225	132,215	144,911	154,925
Financial Intermediation	1,784	1,958	2,123	2,147	2,173	2,488	2,715	2,854	2,997	3,408	3,616	4,031	4,220	4,528
Real Estate, Renting and Business Activities	5,794	6,335	6,965	7,452	8,267	9,147	10,101	11,181	12,310	14,477	14,303	15,607	17,093	18,525
Public Administration and Defence; Compulsory Social Security	15,670	17,360	18,488	17,272	18,073	18,596	20,115	20,764	21,438	23,775	24,678	26,920	29,241	30,838
Education	3,617	4,040	4,371	4,347	4,553	4,684	4,827	5,111	5,287	5,794	6,860	7,647	8,168	8,819
Health and Social Work	11,106	13,138	15,164	14,657	15,370	14,267	17,127	16,418	19,464	21,884	23,555	26,177	28,325	30,170
Other Community, Social and Personal Service Activities	2,970	3,044	3,389	3,409	3,701	3,933	4,187	4,668	5,219	5,784	5,449	5,635	6,157	6,918
Private Households with Employed Persons	-	-	-	-	-	-	-	-	-	-	-	-	-	-
<b>TOTAL</b>	<b>170,571</b>	<b>189,042</b>	<b>214,842</b>	<b>217,397</b>	<b>229,729</b>	<b>244,354</b>	<b>276,725</b>	<b>299,464</b>	<b>316,592</b>	<b>360,031</b>	<b>364,111</b>	<b>400,602</b>	<b>433,013</b>	<b>464,150</b>

**TABLE 17-1 GROWTH RATE OF ANNUAL DEPRECIATION OF PUBLIC SECTOR AT CURRENT REPLACEMENT COST**

(Unit - Percentage)

Sector	1999	2000	2001	2002	2003	2004	2005	2006	2007	2008	2009	2010	2011r	2012p
<b>Agriculture</b>	<b>8.2</b>	<b>7.5</b>	<b>7.9</b>	<b>4.7</b>	<b>9.2</b>	<b>9.4</b>	<b>9.3</b>	<b>5.8</b>	<b>9.4</b>	<b>20.3</b>	<b>-0.3</b>	<b>9.4</b>	<b>7.9</b>	<b>8.1</b>
Agriculture, Hunting and Forestry	8.2	7.5	7.9	4.7	9.2	9.4	9.3	5.8	9.4	20.3	-0.3	9.4	7.9	8.2
Fishing	8.2	7.5	7.9	4.7	9.2	9.4	9.4	5.8	9.3	20.3	-0.3	9.4	7.9	7.7
<b>Non-Agriculture</b>	<b>-0.8</b>	<b>11.2</b>	<b>14.2</b>	<b>0.9</b>	<b>5.3</b>	<b>6.1</b>	<b>13.7</b>	<b>8.5</b>	<b>5.4</b>	<b>13.0</b>	<b>1.3</b>	<b>10.1</b>	<b>8.1</b>	<b>7.1</b>
Mining and Quarrying	0.7	14.9	6.3	0.3	8.0	9.4	10.2	6.6	7.2	16.2	2.0	10.2	9.2	7.8
Manufacturing	-1.5	15.0	9.3	1.4	7.1	4.1	8.3	3.0	4.1	14.1	10.1	11.9	2.5	7.1
Electricity, Gas and Water Supply	7.2	8.0	8.4	4.3	8.8	9.4	11.4	10.3	8.0	14.7	-1.3	14.2	5.5	8.4
Construction	4.9	10.3	9.2	0.5	5.9	4.9	10.0	6.3	5.4	11.4	2.1	13.4	12.6	4.2
Wholesale and Retail Trade; Repair of Motor Vehicles, Motorcycles and Personal and Household Goods	-0.4	8.2	6.5	-3.7	6.2	5.1	8.4	4.8	4.0	12.2	1.8	9.1	7.3	6.1
Hotels and Restaurants	-13.1	19.3	3.6	-4.6	0.3	-0.4	13.3	2.9	-0.5	17.7	-10.4	10.0	8.1	6.8
Transport, Storage and Communications	-4.7	10.1	26.1	2.5	3.6	8.8	18.4	12.9	2.7	11.8	1.0	7.3	9.6	6.9
Financial Intermediation	1.3	9.8	8.4	1.1	1.2	14.5	9.1	5.1	5.0	13.7	6.1	11.5	4.7	7.3
Real Estate, Renting and Business Activities	9.3	9.3	9.9	7.0	10.9	10.6	10.4	10.7	10.1	17.6	-1.2	9.1	9.5	8.4
Public Administration and Defence; Compulsory Social Security	-5.2	10.8	6.5	-6.6	4.6	2.9	8.2	3.2	3.2	10.9	3.8	9.1	8.6	5.5
Education	-0.3	11.7	8.2	-0.5	4.7	2.9	3.1	5.9	3.4	9.6	18.4	11.5	6.8	8.0
Health and Social Work	5.8	18.3	15.4	-3.3	4.9	-7.2	20.0	-4.1	18.6	12.4	7.6	11.1	8.2	6.5
Other Community, Social and Personal Service Activities	1.9	2.5	11.3	0.6	8.6	6.3	6.5	11.5	11.8	10.8	-5.8	3.4	9.3	12.4
Private Households with Employed Persons	-	-	-	-	-	-	-	-	-	-	-	-	-	-
<b>TOTAL</b>	<b>-0.0</b>	<b>10.8</b>	<b>13.6</b>	<b>1.2</b>	<b>5.7</b>	<b>6.4</b>	<b>13.2</b>	<b>8.2</b>	<b>5.7</b>	<b>13.7</b>	<b>1.1</b>	<b>10.0</b>	<b>8.1</b>	<b>7.2</b>

**TABLE 18 ANNUAL DEPRECIATION OF PUBLIC SECTOR AT 1988 PRICES**

(Unit - Millions of Baht)

Sector	1999	2000	2001	2002	2003	2004	2005	2006	2007	2008	2009	2010	2011r	2012p
<b>Agriculture</b>	<b>9,629</b>	<b>10,126</b>	<b>10,566</b>	<b>11,042</b>	<b>11,466</b>	<b>11,912</b>	<b>12,420</b>	<b>12,981</b>	<b>13,638</b>	<b>14,306</b>	<b>14,993</b>	<b>15,734</b>	<b>16,300</b>	<b>16,926</b>
Agriculture, Hunting and Forestry	6,740	7,088	7,396	7,729	8,026	8,338	8,694	9,087	9,547	10,014	10,495	11,014	11,410	11,870
Fishing	2,889	3,038	3,170	3,313	3,440	3,574	3,726	3,894	4,091	4,292	4,498	4,720	4,890	5,056
<b>Non-Agriculture</b>	<b>88,703</b>	<b>92,797</b>	<b>97,033</b>	<b>98,715</b>	<b>99,780</b>	<b>101,431</b>	<b>104,380</b>	<b>107,596</b>	<b>112,165</b>	<b>117,678</b>	<b>122,561</b>	<b>126,058</b>	<b>131,358</b>	<b>136,299</b>
Mining and Quarrying	649	705	709	724	736	768	796	830	878	931	983	1,040	1,085	1,130
Manufacturing	5,734	6,002	6,153	6,414	6,178	6,135	6,088	6,192	6,543	7,243	7,678	8,047	8,417	8,818
Electricity, Gas and Water Supply	18,528	19,287	20,087	20,949	21,400	22,110	22,851	23,772	24,890	26,259	27,414	27,965	29,497	30,600
Construction	6,516	6,684	6,833	7,020	6,918	6,941	7,048	7,217	7,558	8,015	8,392	8,709	9,074	9,309
Wholesale and Retail Trade; Repair of Motor Vehicles, Motorcycles and Personal and Household Goods	312	316	317	311	309	310	312	317	329	347	361	375	388	399
Hotels and Restaurants	5,762	5,784	5,816	5,778	5,731	5,757	5,970	6,282	6,701	7,192	7,496	7,940	8,461	8,734
Transport, Storage and Communications	26,008	27,594	29,892	30,076	31,053	31,623	33,166	34,437	35,811	37,215	38,358	38,979	40,119	41,796
Financial Intermediation	1,069	1,085	1,107	1,144	1,061	1,153	1,159	1,186	1,248	1,354	1,427	1,492	1,555	1,621
Real Estate, Renting and Business Activities	3,446	3,727	3,984	4,239	4,474	4,710	4,963	5,231	5,524	5,806	6,113	6,445	6,703	6,999
Public Administration and Defence; Compulsory Social Security	9,763	9,967	9,859	9,507	9,267	9,187	9,253	9,383	9,795	10,344	10,819	11,392	11,816	12,144
Education	1,927	2,018	2,090	2,109	2,101	2,084	2,089	2,110	2,182	2,291	3,388	3,612	3,691	3,831
Health and Social Work	7,373	7,917	8,382	8,580	8,640	8,687	8,635	8,494	8,442	8,276	8,026	8,120	8,361	8,673
Other Community, Social and Personal Service Activities	1,616	1,711	1,804	1,864	1,912	1,966	2,050	2,145	2,264	2,405	2,106	1,942	2,191	2,245
Private Households with Employed Persons	-	-	-	-	-	-	-	-	-	-	-	-	-	-
<b>TOTAL</b>	<b>98,332</b>	<b>102,923</b>	<b>107,599</b>	<b>109,757</b>	<b>111,246</b>	<b>113,343</b>	<b>116,800</b>	<b>120,577</b>	<b>125,803</b>	<b>131,984</b>	<b>137,554</b>	<b>141,792</b>	<b>147,658</b>	<b>153,225</b>

**TABLE 18-1 GROWTH RATE OF ANNUAL DEPRECIATION OF PUBLIC SECTOR AT 1988 PRICES**

(Unit - Percentage)

Sector	1999	2000	2001	2002	2003	2004	2005	2006	2007	2008	2009	2010	2011r	2012p
<b>Agriculture</b>	<b>9.8</b>	<b>5.2</b>	<b>4.3</b>	<b>4.5</b>	<b>3.8</b>	<b>3.9</b>	<b>4.3</b>	<b>4.5</b>	<b>5.1</b>	<b>4.9</b>	<b>4.8</b>	<b>4.9</b>	<b>3.6</b>	<b>3.8</b>
Agriculture, Hunting and Forestry	9.8	5.2	4.3	4.5	3.8	3.9	4.3	4.5	5.1	4.9	4.8	4.9	3.6	4.0
Fishing	9.8	5.2	4.3	4.5	3.8	3.9	4.3	4.5	5.1	4.9	4.8	4.9	3.6	3.4
<b>Non-Agriculture</b>	<b>3.4</b>	<b>4.6</b>	<b>4.6</b>	<b>1.7</b>	<b>1.1</b>	<b>1.7</b>	<b>2.9</b>	<b>3.1</b>	<b>4.2</b>	<b>4.9</b>	<b>4.1</b>	<b>2.9</b>	<b>4.2</b>	<b>3.8</b>
Mining and Quarrying	4.0	8.6	0.6	2.1	1.7	4.3	3.6	4.3	5.8	6.0	5.6	5.8	4.3	4.1
Manufacturing	6.0	4.7	2.5	4.2	-3.7	-0.7	-0.8	1.7	5.7	10.7	6.0	4.8	4.6	4.8
Electricity, Gas and Water Supply	9.6	4.1	4.1	4.3	2.2	3.3	3.4	4.0	4.7	5.5	4.4	2.0	5.5	3.7
Construction	9.5	2.6	2.2	2.7	-1.5	0.3	1.5	2.4	4.7	6.0	4.7	3.8	4.2	2.6
Wholesale and Retail Trade; Repair of Motor Vehicles, Motorcycles and Personal and Household Goods	3.7	1.3	0.3	-1.9	-0.6	0.3	0.6	1.6	3.8	5.5	4.0	3.9	3.5	2.8
Hotels and Restaurants	0.0	0.4	0.6	-0.7	-0.8	0.5	3.7	5.2	6.7	7.3	4.2	5.9	6.6	3.2
Transport, Storage and Communications	-2.5	6.1	8.3	0.6	3.2	1.8	4.9	3.8	4.0	3.9	3.1	1.6	2.9	4.2
Financial Intermediation	7.1	1.5	2.0	3.3	-7.3	8.7	0.5	2.3	5.2	8.5	5.4	4.6	4.2	4.2
Real Estate, Renting and Business Activities	9.8	8.2	6.9	6.4	5.5	5.3	5.4	5.4	5.6	5.1	5.3	5.4	4.0	4.4
Public Administration and Defence; Compulsory Social Security	-0.4	2.1	-1.1	-3.6	-2.5	-0.9	0.7	1.4	4.4	5.6	4.6	5.3	3.7	2.8
Education	5.1	4.7	3.6	0.9	-0.4	-0.8	0.2	1.0	3.4	5.0	47.9	6.6	2.2	3.8
Health and Social Work	6.8	7.4	5.9	2.4	0.7	0.5	-0.6	-1.6	-0.6	-2.0	-3.0	1.2	3.0	3.7
Other Community, Social and Personal Service Activities	5.4	5.9	5.4	3.3	2.6	2.8	4.3	4.6	5.5	6.2	-12.4	-7.8	12.8	2.5
Private Households with Employed Persons	-	-	-	-	-	-	-	-	-	-	-	-	-	-
<b>TOTAL</b>	<b>4.0</b>	<b>4.7</b>	<b>4.5</b>	<b>2.0</b>	<b>1.4</b>	<b>1.9</b>	<b>3.1</b>	<b>3.2</b>	<b>4.3</b>	<b>4.9</b>	<b>4.2</b>	<b>3.1</b>	<b>4.1</b>	<b>3.8</b>